



Welcome to Philips!

For an optimal experience register your product at: www.philips.com/support

Philips and the Philips Shield Emblem are registered trademarks of Koninklijke Philips NV and are used under license. This product has been manufactured by and is sold under the responsibility of MMD Hong Kong Holding Limited or one of its affiliates, and MMD Hong Kong Holding Limited is the warrantor in relation to this product.

LEA CUIDADOSAMENTE ESTE INSTRUCTIVO ANTES DE USAR SU APARATO

Frequency range: 2.402-2.480GHz Transmitter power: ± 4dBm



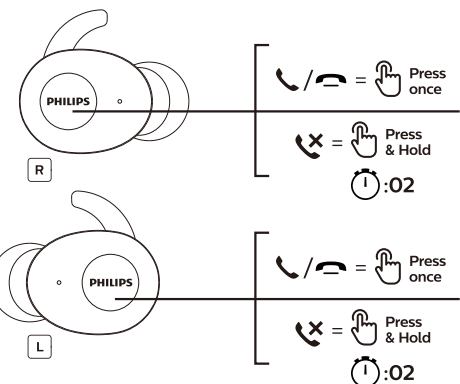
Este equipamento não tem direito à proteção contra interferência prejudicial e não pode causar interferência em sistemas devidamente autorizados. Este produto está homologado pela ANATEL de acordo com os procedimentos regulamentados pela Resolução RDC0200 e ainda em registro técnico aplicado. Para maiores informações, consulte o site da ANATEL: www.anatel.gov.br

Contenido: 1 pieza
CNC ID: XXXXXX

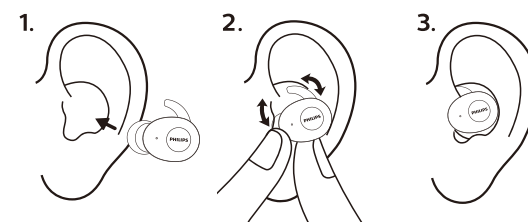
6. Volume control



7. Call features



8. How to wear

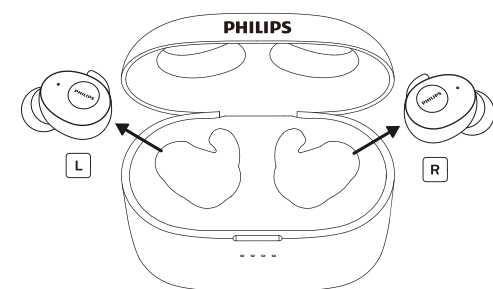


9. How to reset

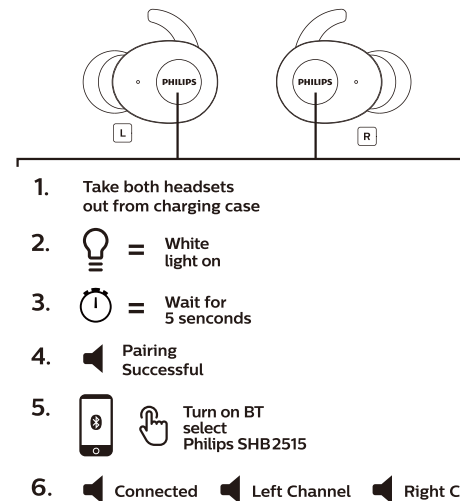
1. Remove the old device



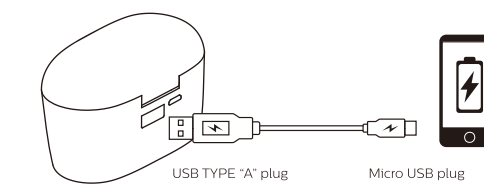
2. Power on



3. Paring



10. Power Bank 3350 mAh



For more details, please refer to www.philips.com/welcome or original QSG in pack.

This device complies with Part 15 of the FCC Rules. Operation is subject to the following two conditions: (1) this device may not cause harmful interference, and (2) this device must accept any interference received, including interference that may cause undesired operation. This equipment complies with FCC radiation exposure limits set forth for an uncontrolled environment. This transmitter must not be co-located or operating in conjunction with any other antenna or transmitter.

Este equipamento opera em caráter secundário, isto é, não tem direito à proteção contra interferência prejudicial, mesmo de estações do mesmo tipo, e não pode causar interferência a sistemas operando em caráter primário.

警告: 充電には認可された輸入事業者等が明記されたUSB充電器DC 5Vのみをお使いください

免費: お客様がご購入された製品について、弊社に故障または重大な過失がある場合を除き、損害賠償責任は購入金額を限度額といたします。弊社における保証は本製品の機能に関する保証のみに限ります。

注意事項: 1. 自動車、自動車、オートバイなどの運転中には、ヘッドホンを使用しないでください。交通事故の原因となります。

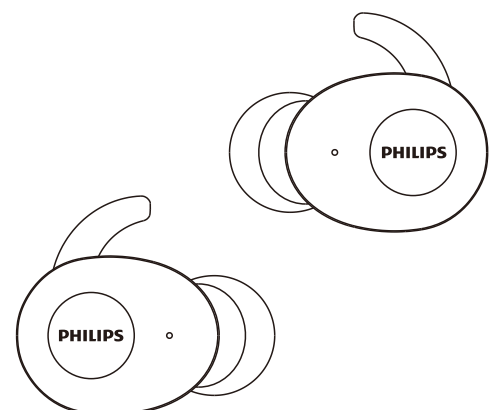
保証規定: 保証期間中に正常なご使用状況のもとで故障した場合は、本記載内容に基づき無償修理いたします。万一故障した場合は、お買い上げの販売店又はフィリップスサポートセンターまでお申し込みください。なお、次のような場合は、保証期間内でも有償修理とさせていただきます。

1. 本書の提示がない場合。 2. お買い上げ販売店名の記載及び捺印、お買い上げ年月日がない場合。 3. ご使用上の誤り、不当な修理や改造による故障及び損傷。

低周波電磁放射電機管理辦法 第十二條 經型式認證合格之低周波射頻電機，非經許可，公司、商號或使用者不得擅自變更頻率，加大功率或變更設計之特性及功能。

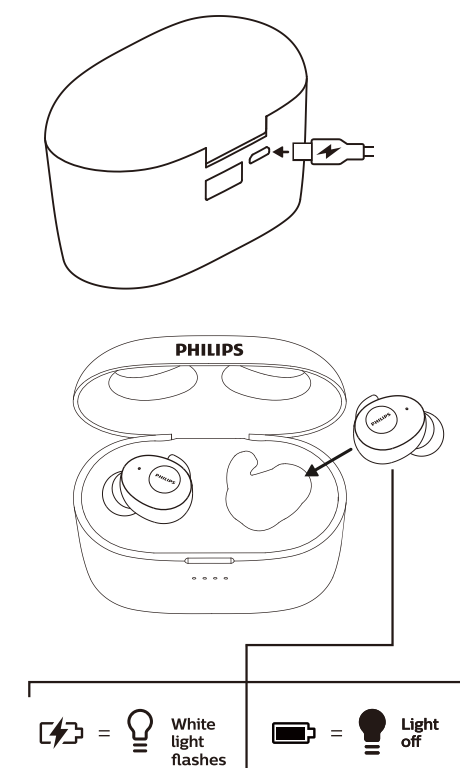


Quick start guide



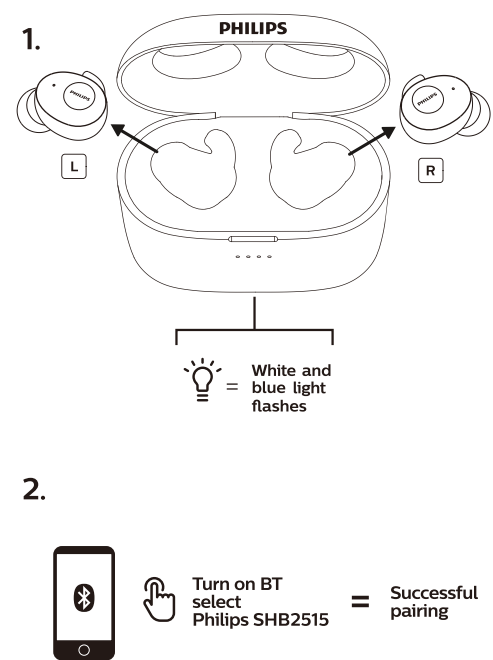
Please refer to www.philips.com/welcome for the full user manual in all languages.

1. Charging



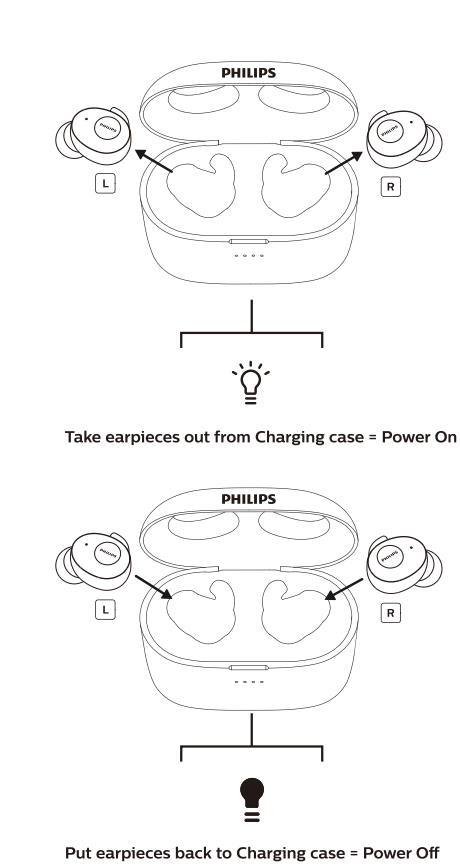
Warning: Only charge with certified USB adaptor DC 5V/1.0 A

2. Power on and pairing

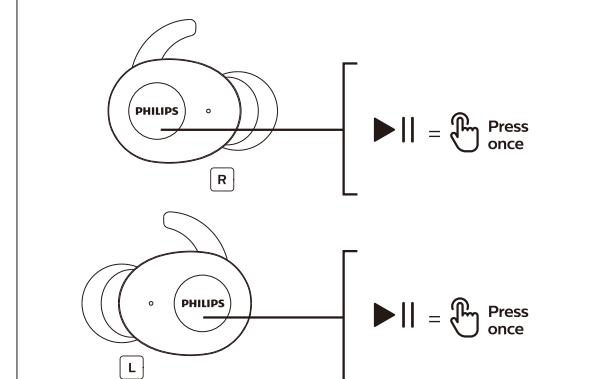


For more details, please refer to www.philips.com/welcome.

3. On/Off



4. Play/Pause



5. Track control

