

# SC-T5100 Series / SC-T3100 Series SC-T5100N Series / SC-T3100N Series

## Operator's Guide

This guide contains selected information on how to use the printer and frequently used features of the printer. See the User's Guide (online manual) for detailed instructions on using the printer.


---

Home Screen Operations .....	2
Getting Ready to Print .....	4
Printing CAD Drawings .....	6
Printing Banners .....	8
Printing at Non-Standard Sizes .....	10
Printing Outside the Office .....	12

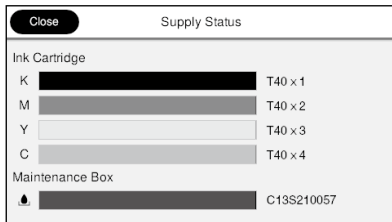
# Home Screen Operations

## Approx. remaining levels of consumables

As the ink is consumed or the maintenance box becomes full, the corresponding bar becomes shorter.


When  is displayed on bars, prepare a new ink cartridge or a maintenance box. You can continue printing until replacement is required.

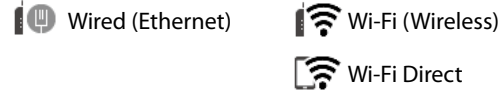
 Touch this icon...



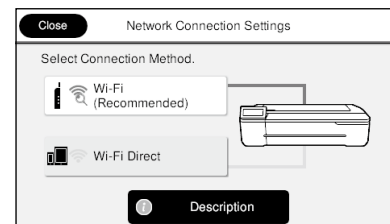
You can see the consumable product numbers.

## The network connection status


The icon changes according to the connection method. While the printer is connected,  is blue and indicates the signal strength.



 Touch this icon...




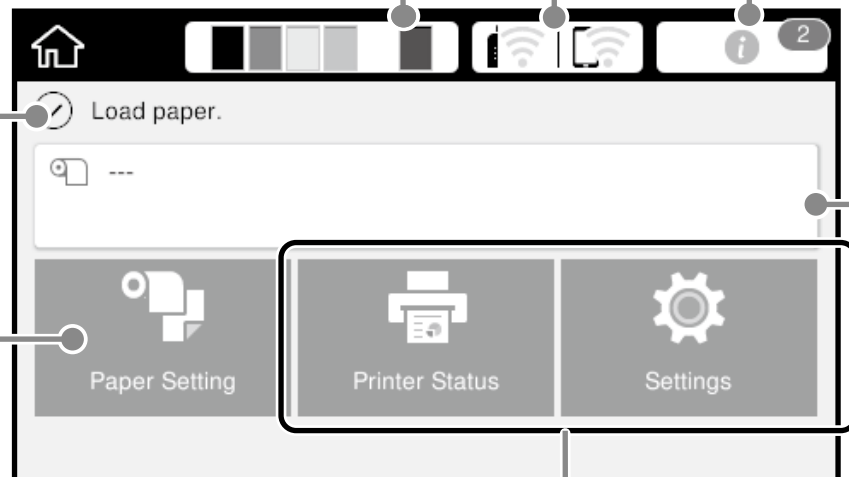
You can change the connection method.

For information on Wi-Fi Direct, see below.  
 "Printing Outside the Office" on page 12

## The current printer status

## Touch to load or remove paper.


 "Getting Ready to Print" on page 4



## Touch to check the printer status or change the printer settings.

When you connect a compatible Epson scanner to the printer, the **Enlarged Copy** button appears.



The **Settings** button appears when you touch .

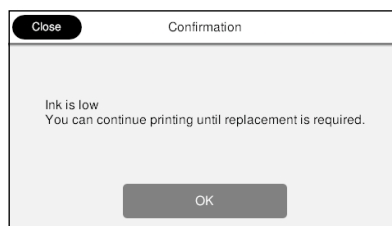
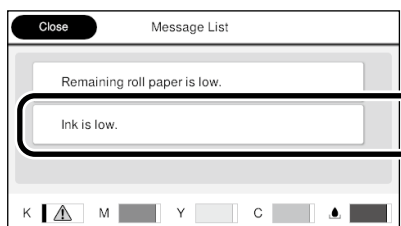
The home screen is displayed when the printer is turned on. These pages show the available operations on the home screen.

## The number of notices

The number of notices, such as ink low warnings, is displayed on the icon.



Touch this icon...



A list of the notices that require your action is displayed. You can see instructions on what to do when you touch each notice.

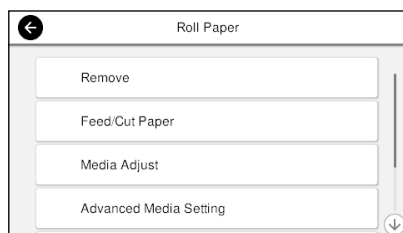
When you complete the actions for all the notices, the number disappears from the icon.

## Roll paper information

The paper type and roll paper width that have been set are displayed.



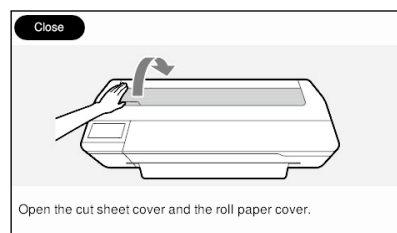
Touch after loading roll paper...



You can perform actions such as replacing roll paper.



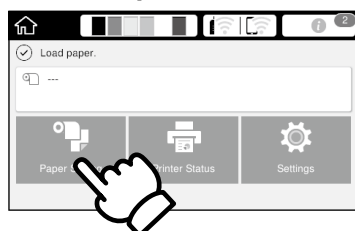
Touch before loading roll paper...



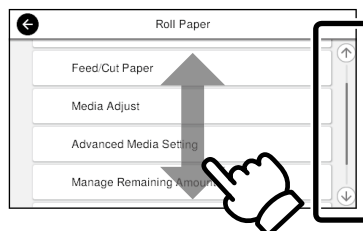
Instructions on how to load roll paper are displayed.

## Touch Panel Operations

### Touch (tap)



### Slide

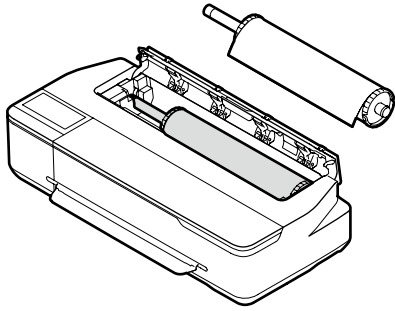


The scroll bar is displayed when you can scroll up and down.

# Getting Ready to Print

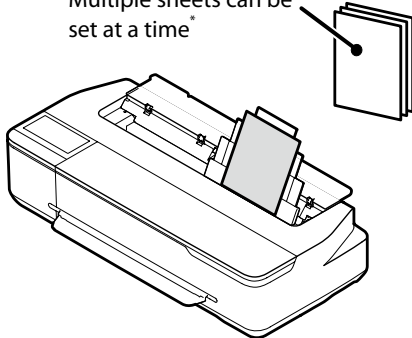
## Check the Paper Loading Positions

### Roll Paper



### Auto Sheet Feeder

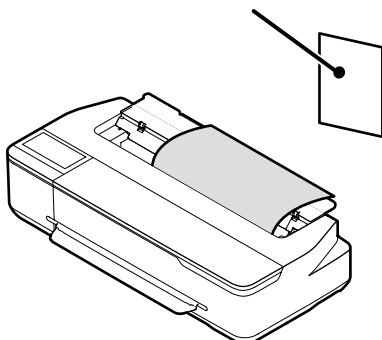
A4 to A3  
Multiple sheets can be  
set at a time\*



\*The number of sheets loaded at one time varies according to the paper type.

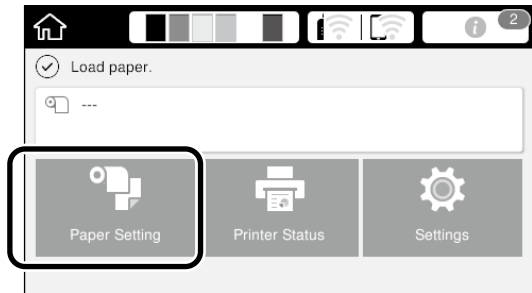
### Cut Sheet (1 sheet)

A4 to the maximum print width  
One sheet at a time

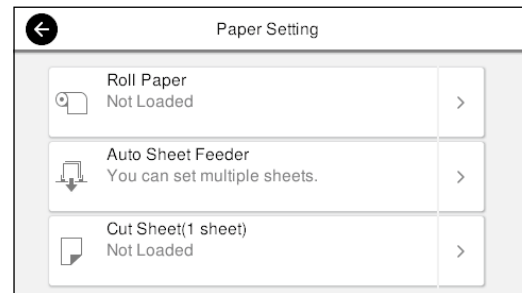


## Load the Paper Following the On-Screen Instructions

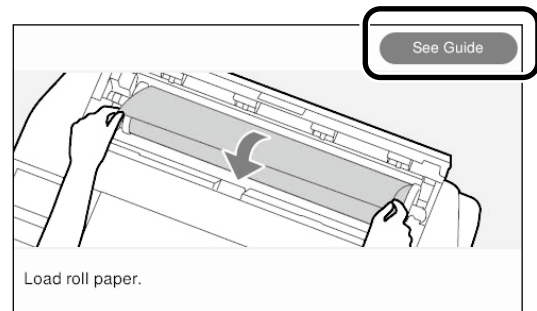
### 1 Touch **Paper Setting**.



### 2 Select one of the paper sources.



### 3 Touch **See Guide** to see the detailed on-screen instructions.



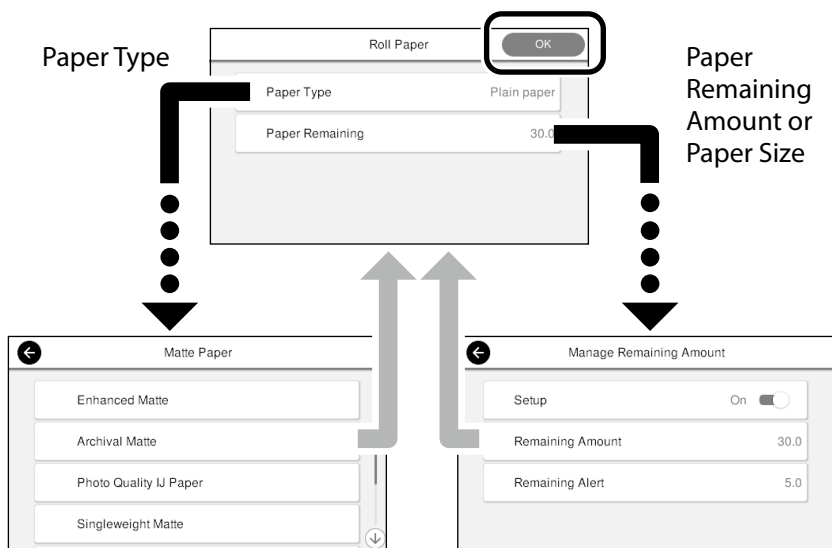
When **Load paper** or **Ready** is displayed on the home screen, you can open the cut sheet cover and load a cut sheet into the printer. After you load a cut sheet, make sure to select **Cut Sheet (1 sheet)** in step 2. Otherwise, the printer cannot detect the loaded cut sheet.

These pages explain how to get the printer ready for printing. Carefully follow these steps to get optimum print quality.

## Set the Paper Type and Paper Size

The setting items vary according to the paper. If you select a paper type or size that does not match the loaded paper, the printout will have creases, ink smudges, or banding.

Press **OK** after you complete the settings



Promptly select the settings because the paper will start being fed if the screen is not used for 90 seconds.

### Epson Special Paper

Select the paper name printed on the paper package.

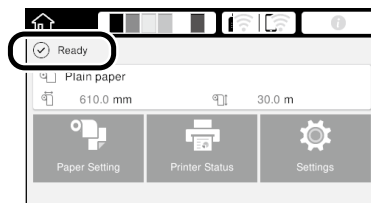
### Non-Epson Paper

Select one of the following.

- Plain Paper
- Coated Paper <Generic>
- Photo Paper <Generic>
- Tracing Paper
- Tracing Paper <LowDuty>
- Matte Film

## Print

When **Ready** is displayed, you can start printing.



You can load roll paper and then load cut sheets on the auto sheet feeder. The printer driver allows you to select either of these two paper sources.

# Printing CAD Drawings

## Using the Printer Driver

This method is best suited to printing CAD drawings, such as appearance view of buildings, at high quality.

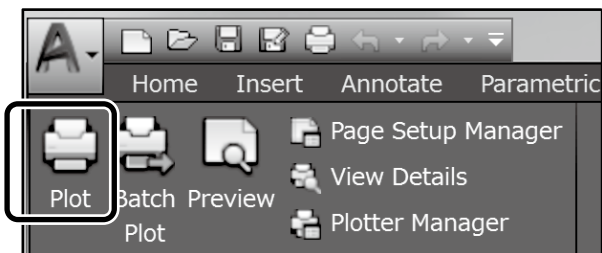


### Important

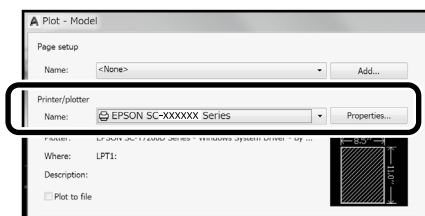
If lines or parts on your drawing are not printed properly, use the HP-GL/2 or HP RTL mode.

The procedure below is for AutoCAD 2018.

### 1 Click Plot.



### 2 Select the printer in **Printer/plotter**, and then click **Properties...**



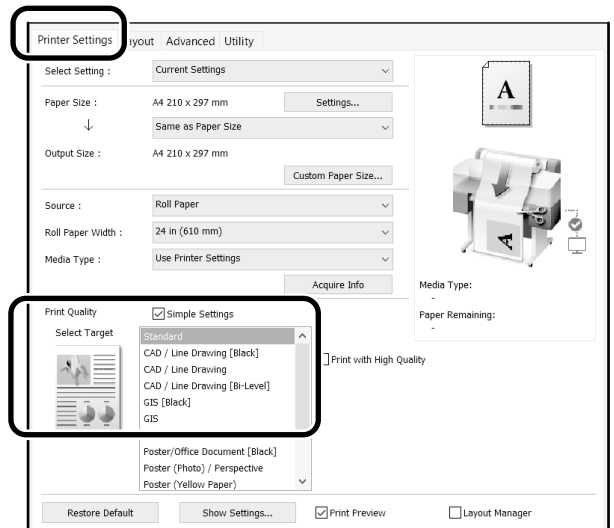
### 3 Click **Custom Properties**.



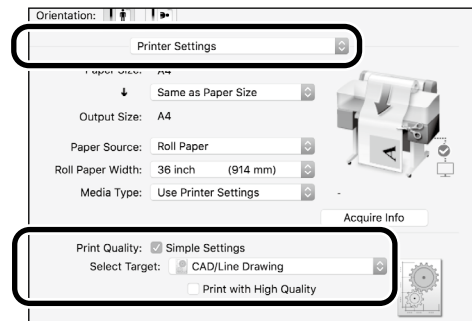
The printer driver screen is displayed.

### 4 Select **CAD/Line Drawing** at **Printer Settings** tab.

#### Windows



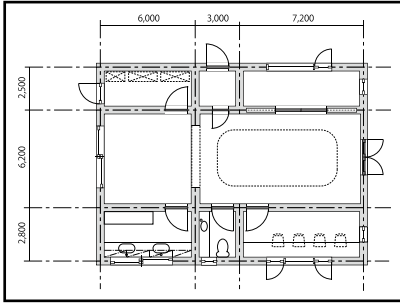
#### Mac



Print CAD and GIS drawings using either of the following two methods depending on the intended use of the drawing.

## Using HP-GL/2 or HP RTL Mode

This method is best suited to printing CAD and GIS drawings, such as maps and blueprints.

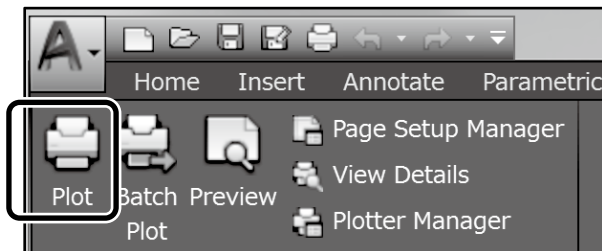


You can print from an application that supports HP-GL/2 (compatible with HP DesignJet 750C) and HP RTL.

The default paper source is **Roll Paper** and the default print quality is **Standard**. If you want to change the settings, change them from the printer setting menu before performing the procedure below.

The procedure below is for AutoCAD 2018.

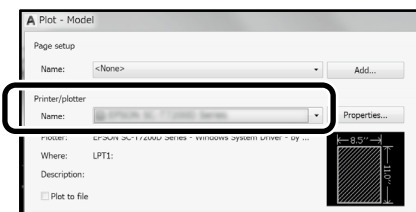
### 1 Click **Plot**.



### 2 Select plotter in **Printer/plotter**.

Select the plotter name as shown below according to your model.

- SC-T5100 Series: HP DesignJet 750C C3196A
- SC-T3100 Series: HP DesignJet 750C C3195A
- SC-T5100N Series: HP DesignJet 750C C3196A
- SC-T3100N Series: HP DesignJet 750C C3195A



#### ❑ When nothing is printed or text is garbled

Change the printer setting as follows.

**Settings - General Settings - Printer Settings - Printing Language - USB (or Network) - HP-GL/2**

When you print using the printer driver, change the setting back to **Auto** from **HP-GL/2**.

#### ❑ When you want to print on a cut sheet or change the print quality setting

Select your target setting item from the printer setting menu shown below.

**Settings - General Settings - Printer Settings - Universal Print Settings**

#### ❑ When you want to change the pen width or pen color

Select your target setting item from the printer setting menu shown below.

**Settings - General Settings - Printer Settings - HP-GL/2 Unique Settings**

#### ❑ When you want to print on oversized paper

Load the printer with paper larger than the original size, and then change the printer setting as follows.

**Settings - General Settings - Printer Settings - Universal Print Settings - Page Margins option - Oversize**

# Printing Banners

## Steps to print a banner

Create the original in the application \*



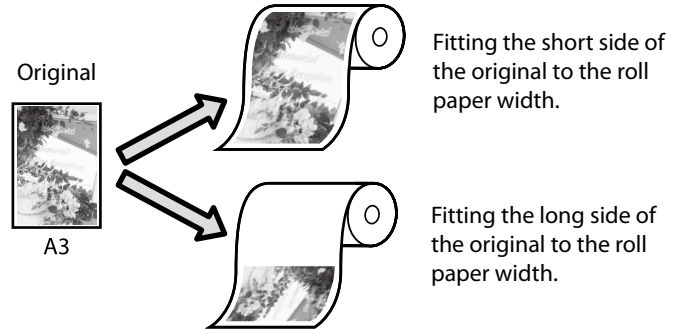
Select the enlargement method in the printer driver



Print

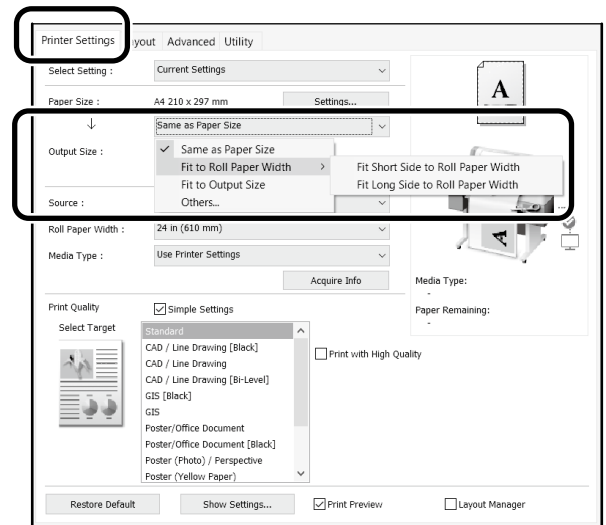
\*For creating a non-standard size original, see below.  
👉 "Printing at Non-Standard Sizes" on page 10

## Fitting the Original to the Roll Paper Width

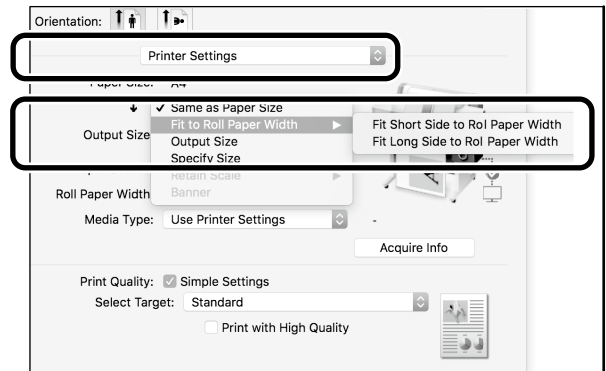


Select **Output Size - Fit to Roll Paper Width**, and then select whether to fit the short side or long side of the original to the roll paper width.

## Windows



## Mac

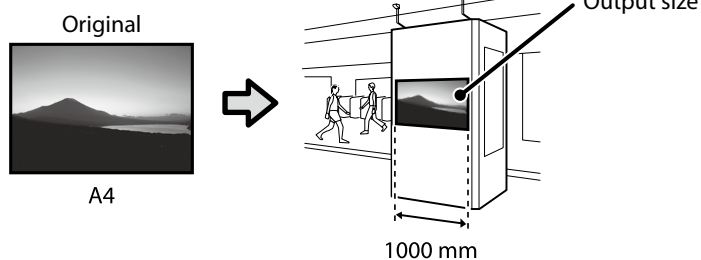
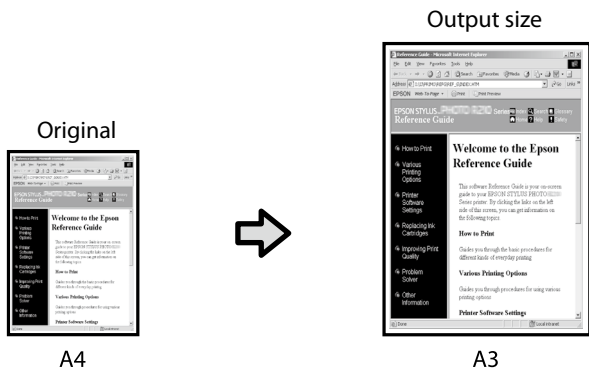




These pages explain how to enlarge and print an original created at a standard size for a banner.

## Fitting the Original to the Output Size

## Specifying the Size

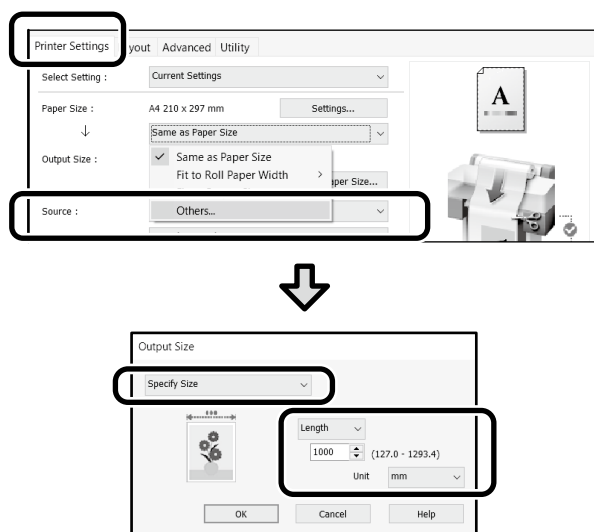
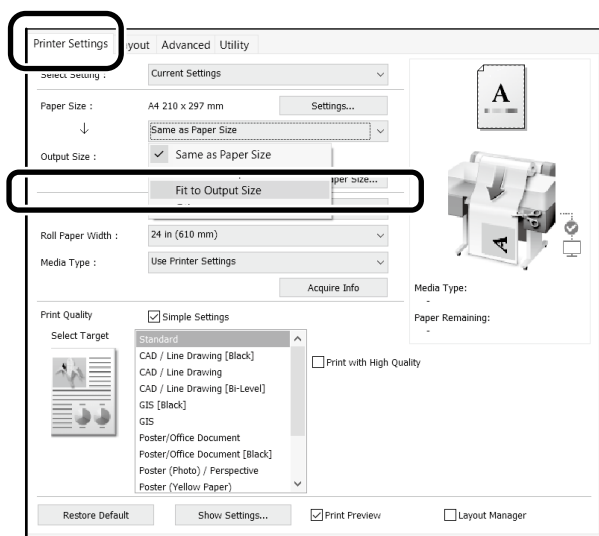


Select **Output Size - Fit to Output Size**, and then select the output size.

Select **Output Size - Specify Size**, and then select the output size or enter magnification.

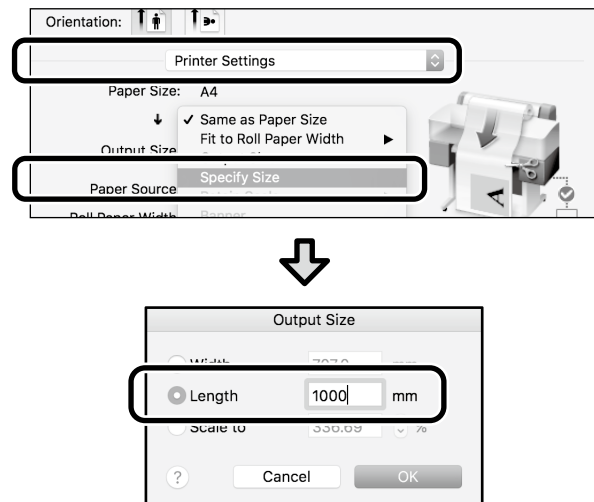
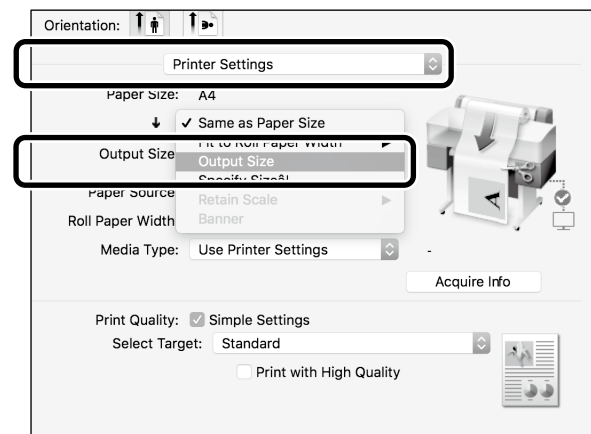
## Windows

## Windows



## Mac

## Mac



# Printing at Non-Standard Sizes

## Steps to print a non-standard size

Register and select the paper size in the application



Create the original



Enlarge and print the original

These pages explain how to create an original that is about one-third of the output size and then enlarge and print that original to create a banner that fits the width of 24-inch (610 mm) roll paper.

### Paper size (original)\*



### Output size

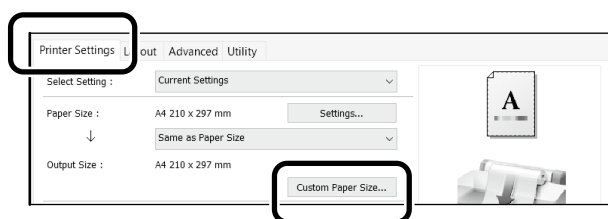


\*You can configure the paper size as shown below.  
Paper Width: 89 mm to maximum printing width  
Paper Height: 127 mm to 18,000 mm (Windows)  
Height: 127 mm to 15,240 mm (Mac)

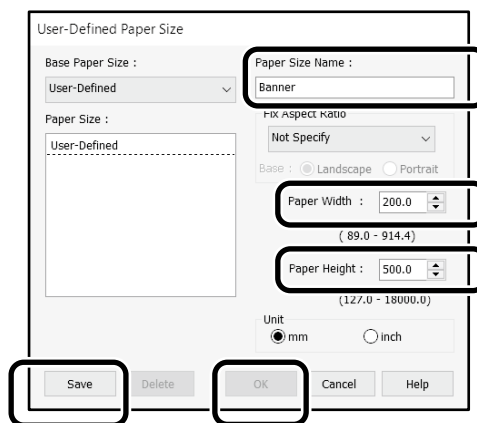
## Register and Select the Paper Size

### Windows

- 1 Start the application, click the **File** menu, and then click **Print**.
- 2 On the **Printer Settings** tab, click **Custom Paper Size...**



- 3 Enter the following information on the **User-Defined Paper Size** window. Click **Save**, and then click **OK** to finish registering the paper size.



- 4 Select the registered paper size.

Example: Microsoft Word 2016



**Orientation:** **Landscape**  
**Size:** Banner

If the registered paper size is not displayed, check the paper sizes supported in the application.

These pages explain how to create and print an original with a non-standard size, such as a banner or square shape.

## Create the Original

Create the original using the application.

## Enlarge and Print the Original

Load 24-inch roll paper, and then enlarge and print the original by fitting it to the roll paper width.

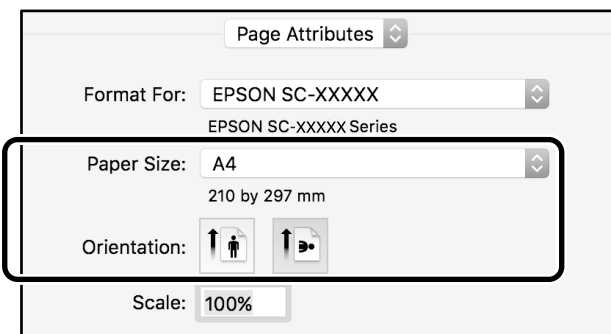
For enlarging and printing the original, see below.  
🔗 "Printing Banners" on page 8

### Mac

- 1 Start the application, and then click **Page Setup**.

If **Page Setup** is not displayed due to the application, select **Print**.

- 2 For **Orientation**, select , and for **Paper Size**, select **Manage Custom Sizes**.

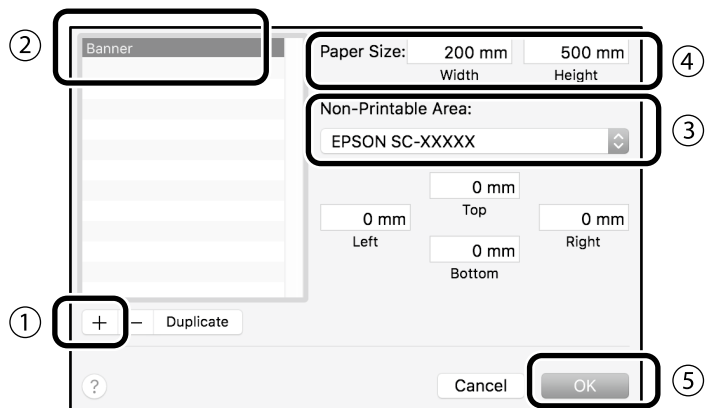


- 3 Register the paper size in the following order.

For ②, enter "Banner" as the name of the paper size.

For ③, select the printer name.

Click **OK** to finish registering the paper size.



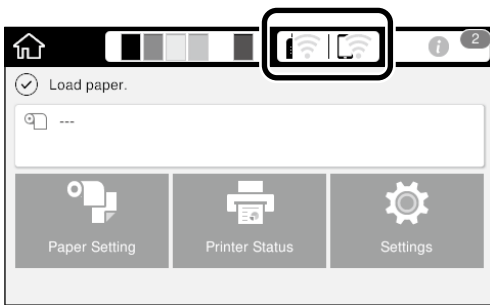
# Printing Outside the Office

This page explains how to print in an environment that is not equipped with a wireless network router or access point.

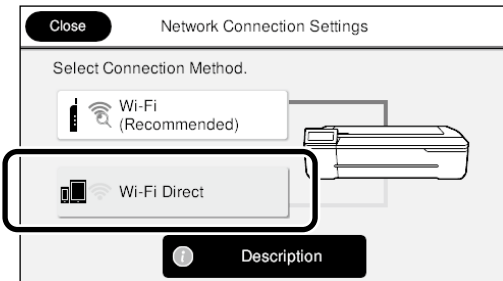
## Wi-Fi Direct Connection

Use Wi-Fi Direct to connect your computer or smart device to the printer when you are outside the office and cannot connect to the printer over a wired or wireless connection.

1 Touch  on the home screen.



2 Touch **Wi-Fi Direct**.



Follow the on-screen instructions.

## Print

After connecting to the printer with Wi-Fi Direct, print using the printer driver. Even if the printer driver has not been installed, you can still print with a Mac computer or iOS smart device using AirPrint.

Windows computer	Printer driver
Mac computer	Printer driver or AirPrint
iOS smart device	AirPrint

The following operations are not allowed when using AirPrint.

- Printing by automatically fitting the original to the roll paper width
- Printing by automatically enlarging or shrinking the original to fit the output paper size
- Setting a print quality suitable for the intended purpose of use

Use the printer driver for these operations.

See the Apple website for more information on using AirPrint.



MEMO

MEMO

---

## Copyrights and Trademarks

No Part of this publication may be reproduced, stored in a retrieval system, or transmitted in any form or by any means, electronic, mechanical, photocopying, recording, or otherwise, without the prior written permission of Seiko Epson Corporation. The information contained herein is designed only for use with this Epson printer. Epson is not responsible for any use of this information as applied to other printers.

Neither Seiko Epson Corporation nor its affiliates shall be liable to the purchaser of this product or third parties for damages, losses, costs, or expenses incurred by the purchaser or third parties as a result of accident, misuse, or abuse of this product or unauthorized modifications, repairs, or alterations to this product, or (excluding the U.S.) failure to strictly comply with Seiko Epson Corporation's operating and maintenance instructions.

Seiko Epson Corporation shall not be liable for any damages or problems arising from the use of any options or any consumable products other than those designated as Original Epson Products or Epson Approved Products by Seiko Epson Corporation.

Seiko Epson Corporation shall not be held liable for any damage resulting from electromagnetic interference that occurs from the use of any interface cables other than those designated as Epson Approved Products by Seiko Epson Corporation.

EPSON, EPSON EXCEED YOUR VISION, EXCEED YOUR VISION, and their logos are registered trademarks or trademarks of Seiko Epson Corporation.

Microsoft®, Windows®, and Windows Vista® are registered trademarks of Microsoft Corporation.

Mac, macOS, OS X, Bonjour, Safari, and AirPrint are trademarks of Apple Inc., registered in the U.S. and other countries.

HP-GL/2® and HP RTL® are registered trademarks of Hewlett-Packard Corporation.


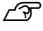
AutoCAD is registered trademarks or trademarks of Autodesk, Inc., and/or its subsidiaries and/or affiliates in the USA and/or other countries.

*General Notice: Other product names used herein are for identification purposes only and may be trademarks of their respective owners. Epson disclaims any and all rights in those marks.*

© 2018 Seiko Epson Corporation. All rights reserved.

---

## Meaning of Symbols

 <b>Important</b>	Important must be followed to avoid damage to this product.
	Indicates related reference content.

---

## Product Model Descriptions

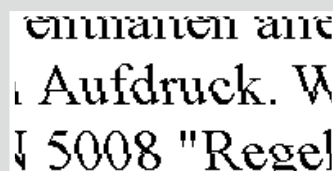
Some models described in this manual may not be sold in your country or region.

# Troubleshooting Print Quality Problems

## Horizontal or Vertical Lines



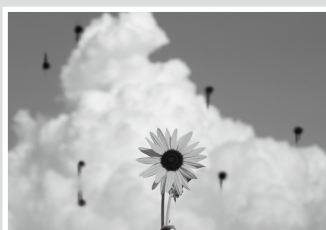
## Double Ruled Lines or Warped Characters



## Creases, Scuff marks, or Uneven colors



## Ink Drops



## Solutions

Perform the solutions in the following order until the printed results have improved. Start by reloading the target paper.

### Check the Paper Type Setting

Touch **Paper Setting** on the home screen and check the paper type setting. If the paper type setting is incorrect, touch the target paper source and change to the correct paper type.

For how to set the paper type, see below.

 **"Getting Ready to Print" - "Set the Paper Type and Paper Size" on page 5**



**If the printed results did not improve**

### Perform Media Adjust

From the home screen, touch **Paper Setting** - target paper source - **Media Adjust**. Follow the on-screen instructions to complete the adjustment.



**If the printed results did not improve**

### Check for Clogged Nozzles and Run Head Cleaning

From the home screen, touch **Settings** - **Maintenance** - **Print Head Nozzle Check**.

Follow the on-screen instructions to print and check the nozzle check pattern and to run head cleaning.



**If the clogged nozzles did not improve after three times**

### Run Powerful Cleaning

From the home screen, touch **Settings** - **Maintenance** - **Powerful Cleaning**.

**If the clogged nozzles still did not improve, contact your dealer or Epson Support.**

Perform head cleaning.

From the home screen, touch **Settings** - **Maintenance** - **Print Head Cleaning**.