



Dell | Displays

Quality

Dell-branded monitors are designed to our exacting quality standards and manufactured by the world's foremost suppliers, who must pass Dell's stringent quality audit. All Dell monitors meet or exceed relevant industry standards.

Reliability

Dell-branded monitors undergo exhaustive testing for performance, reliability, durability and compatibility with Dell systems. Under our H.A.L.T (Highly Accelerated Life Cycle Testing) regimen, Dell engineers push our monitors well past specified tolerance limits for heat, cold, vibration, shocks and drops, to ensure that they can withstand real-world conditions.

Price-Performance Value

Dell's enormous buying power and direct business model allows us to offer high quality monitors at low prices. Dealing with Dell, the world's largest Flat Panel provider¹, means a single point of contact and accountability, and the peace of mind of purchasing from a stable and reliable technology partner.

The Dell™ UltraSharp™ 2007WFP 20-inch Widescreen Flat Panel LCD Monitor is a wide aspect desktop display that redefines the performance of LCD displays with its stylish new black design and advanced functionality. The new UltraSharp 2007WFP monitor demonstrates Dell's continuous commitment to provide customers with the latest flat-panel technology and is ideally suited for multi-taskers, including high-end graphic designers, content creation users, financial sector analysts and gamers.

Outstanding Screen Performance

- **Fast response time with less smearing and ghosting than traditional flat panel displays.**
 - 16ms typical
- **High contrast ratio resulting in excellent colour accuracy and uniformity.**
 - 800:1 typical
- **High Resolution can provide excellent entertainment and multimedia experience.**
 - 1680 x 1050 resolution: About 34%² more content compared to Dell UltraSharp 19" monitor.

Excellent Multimedia, Video and Graphics Experience

- **DVI (Digital Video Interface) Connector with HDCP (High-Bandwidth Digital Copy Protection) Ready**
 - DVI helps to ensure high quality image (no jitter), and stupendous colour uniformity.
 - HDCP helps enable viewing of protected high-definition content.
- **S-Video and Composite Connector**
 - Allows connection to other video devices such as game consoles and cable boxes.
- **Picture in Picture / Picture By Picture Function**
 - View multiple sources through Picture-in-Picture or Picture-by-Picture functionality.
- Easy attachment of **optional Dell 10W multimedia soundbar AS501.**

Designed for Comfort and Convenience

- **4 USB 2.0 high speed ports** for easy access to connect peripheral devices such as cameras, USB keys or mouse.
- **Comprehensive flexibility** of height adjustability (100mm up or down), swivel (45° left and right) and tilt (4° forward and 21° backward).
- **Dell-Designed Display Enhancements**
 - Slim black bezel designed to fit into most working environments and on most desktops.
 - Easy display detachment from stand can enable panel to be wall-mounted (VESA standard 100mm, wall mount sold separately.)
 - Stand lock down mechanism allows locking of monitor into place at the lowest height which can allow easy transportation of display.

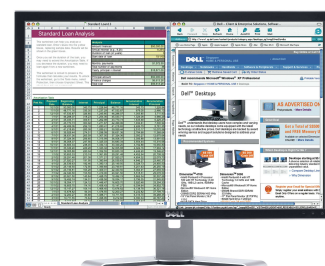


DETAILED SPECIFICATIONS

| | |
|---|--|
| Product Category | Flat Panel Display |
| Model Name and Number | 2007WFP |
| Monitor Size (Viewable Image Screen) | 20.1 inches (20.1-inch viewable image size) |
| Pixel Pitch | 0.258mm |
| Response Type (Typical) | 16ms |
| Preset Display Area: | |
| Horizontal | 433.4mm (17 inches) |
| Vertical | 270.9mm (10.7 inches) |
| Viewing Angle (Typical) | +/- 89 degrees (vertical), +/- 89 degrees (horizontal) |
| Luminance (Brightness) | 300cd/m ² Typical |
| Contrast Ratio (Typical) | 800:1 |
| Horizontal Scan Frequency kHz | 30 kHz to 81 kHz (automatic) |
| Vertical Scan Frequency Hz | 56 Hz to 76 Hz (automatic), exception 1680 x 1050 at 60 Hz only |
| Optimal Resolution | 1680 x 1050 at 60 Hz |
| Preset Display Modes: | |
| VESA, 720 x 400 | 31.5 kHz Horizontal, 70.1 Hz Vertical, 28.3 MHz |
| VESA, 640 x 480 | 31.5 kHz Horizontal, 59.9 Hz Vertical, 25.2 MHz |
| VESA, 640 x 480 | 37.5 kHz Horizontal, 75.0 Hz Vertical, 31.5 MHz |
| VESA, 800 x 600 | 37.9 kHz Horizontal, 60.3 Hz Vertical, 40.0 MHz |
| VESA, 800 x 600 | 46.9 kHz Horizontal, 75.0 Hz Vertical, 49.5 MHz |
| VESA, 1024 x 768 | 48.4 kHz Horizontal, 60.0 Hz Vertical, 65.0 MHz |
| VESA, 1024 x 768 | 60.0 kHz Horizontal, 75.0 Hz Vertical, 78.8 MHz |
| VESA, 1152 x 864 | 67.5 kHz Horizontal, 75.0 Hz Vertical, 108 MHz |
| VESA, 1280 x 1024 | 64.0 kHz Horizontal, 60.0 Hz Vertical, 108 MHz |
| VESA, 1280 x 1024 | 80.0 kHz Horizontal, 75.0 Hz Vertical, 135 MHz |
| VESA, 1680 x 1050 (Digital) | 64.6 kHz Horizontal, 59.9 Hz Vertical, 119 MHz |
| VESA, 1680 x 1050 (Analog) | 65.3 kHz Horizontal, 60.0 Hz Vertical, 146.25 MHz |
| Connector Type | Analog, DVI-D (Digital) with HDCP |
| Other Connectors / Features | S-Video, Composite Video, 4 Universal Serial Bus (USB) 2.0 Ports, Kensington security port |
| Stand | Tilt, Swivel, Height Adjustable |
| VESA Mounting Support | YES (100mm) |
| Dimensions (Height x Height x Width x Depth) Inch | 20.2 (extended/portrait) x 13.1 (compressed/landscape) x 18.6 x 7.0 |
| Dimensions (Height x Height x Width x Depth) mm | 513.0 (extended/portrait) x 332 (compressed) x 472.7 x 177.7 |
| Weight (Monitor Only) | 6.5 Kg (14.3 lb) |
| Weight (with packaging) | 9.0 Kg (19.8 lb) |
| AC input voltage | 100 to 240 VAC / 50 or 60 Hz ± 3 Hz / 2.0A (Max.) |
| Operating (Typical Maximum) | |
| - Active Off | Less than 2W |
| - Switched Off | Less than 1W (at 230 V) |

The wide-aspect capability (widescreen) helps Dell UltraSharp users to enjoy the multimedia experience on their PC to the fullest. Users can watch DVDs in native resolution and run multiple applications on the screen simultaneously. Widescreen also helps improve productivity with less scrolling and toggling and is an excellent option for video-editing and 3-D imaging as both source and destination video can be viewed in a single window.

• **Ultra-Resolution Widescreen Helps Improve Productivity!**



• **Excellent option for photo-editing!**



Recycling: Dell recommends that customers dispose of their used computer hardware, including monitors, in an environmentally sound manner. Potential methods include reuse of parts or whole products and recycling of product, components and/or materials. For more information, please visit http://dell.com/recycling_programs and www.dell.com/environment.

Dell cannot be held responsible for typography and photography.

1. DisplaySearch Q3 Quarterly Desktop Monitor Report, “ Top 10 WW LCD PFD Vendors”, December 2005.
2. Content area determined by total pixel count per given area. Dell UltraSharp 1907FP and Dell E196FP, 19” Flat Panel Display’s resolution in comparison to Dell UltraSharp 2007WFP Flat Panel Display’s ~ 1280 x 1024 pixels versus 1680 x 1050 pixels respectively.

Dell, the Dell logo and UltraSharp are trademarks of Dell Inc. Dell disclaims propriety interest in the marks and names of others. Copyright 2006 Dell Inc. All rights reserved.