

OmniLink® TM-m50 POS Thermal Receipt Printer



Receipt Printer

POS

Sleek receipt printer with modern design and versatile connectivity.

Modern industrial design — compact 3" thermal receipt printer supports traditional, cloud-based and mPOS/tablet POS systems

Connect to multiple devices — printer can be dynamically shared by legacy POS terminals, tablets and mobile devices, as well as cloud servers and POS peripherals

Triple-interface connectivity to help future-proof growing businesses — maximum flexibility with built-in USB, Ethernet and Serial ports, plus options for wireless technologies

Online ordering ready — Server Direct Print technology enables the printer to retrieve data from the Internet

Compatible with cloud applications — via OmniLink Merchant Services

Distributed proximity-based printing — beacon support using BLE (Bluetooth Low Energy)¹; NFC (Near Field Communication)² technology for easy pairing with mobile devices

Fast, reliable receipt printing — speeds up to 350 mm/sec; printhead life of 200 km³, auto cutter life of 2.2 million cuts³

Smart connectivity — share data using a single USB cable⁴ (cable not included); charge smartphones and tablets (Bluetooth® model only)

USB-Network-Tethering⁵ — provides network connectivity from the printer to a tablet (Bluetooth model only)

Print

Print Method Thermal
Print Speed 350 mm/second
Print Resolution 180 dpi
Print Direction Vertical and horizontal

Print Fonts

Fonts/Column Capacity Font A: 12 x 24 42 cpl (default); Font B: 9 x 24 56 cpl, Kanji Font A: 24 x 24 24 cpl; Kanji Font B: 16 x 16, 32 cpl (Korean)
Character Size Font A: 1.41 x 3.39 mm; Font B: 0.99 x 3.39 mm; Kanji Font A: 3.39 x 3.39 mm; Kanji Font B: 2.26 x 2.26 mm
Character Set 95 Alphanumeric, 18 International, 128 x 43 Graphic, Japanese (11,233 characters of JIS X0213:2004, 1 special character), Simplified Chinese (28,553 characters of GB18030-2000), Traditional Chinese (13,535 characters of Big5), Korean (8,366 characters of KSC5601)
Barcode UPC-A, UPC-E, JAN8/EAN8, JAN13/EAN13, Code39, Code93, Code128, ITF, CODABAR (NW-7), GS1-128, GS1 DataBar, Code 128 Auto
Two-dimensional Symbol Printing PDF417, QR Code, MaxiCode, DataMatrix, Aztec Code, Two-dimensional GS1 DataBar, Composite Symbology

Media Handling

Media Dimensions
80 mm: 79.5 ± 0.5 x 83 mm
3.13" ± 0.02" (width) x 3.27" (roll diameter)
58 mm: 57.5 ± 0.5 x 83 mm
2.26" ± 0.02" (width) x 3.27" (roll diameter)
Thickness 48 – 80 µm
Type Thermal roll paper
Paper Feed Method Friction feed
Paper Back Feed Yes
Width 3.12"/79.5 mm
Paper Loading Drop-in
Roll Diameter (Max) 3.27"/83 mm
Core Diameter (Min) 0.71"/18 mm
Paper Guide Yes
Auto Cutter Yes

Connectivity

Interface (Ethernet model) Built-in USB, built-in Ethernet (10/100Base-T/TX) +
- Serial
- Bluetooth 3.0+EDR
- Wireless (USB wireless dongle) OT-WL06 (802.11 a/b/g/n/ac, 2.4 GHz/5 GHz)
- Printer Discovery NFC (Near Field Communication)²
- Simple AP (wireless network)

Connectivity (Continued)

Supported Operating Systems iOS[®], Android[™], Windows[®], Mac[®] OS X[®], GNU (Linux)
Easy Setting Function NFC², QR code
Easy Setting Tool TM Utility (iOS, Android), TM-m50 Utility (Windows), EpsonNet Config, TM Bluetooth Connector

Reliability³

Printer Reliability 20 million printing lines
MTBF 360,000 hours
MCBF 70,000,000 lines
Auto Cutter Reliability 2.2 million cuts

General

NV Bit Image Memory 12KB (max)
NV Graphics 384KB (max)
Receive Buffer 4KB or 45byte
Development Kit Epson[®] ePOS[™] SDK (iOS, Android, JavaScript), TM Print Assistant (iOS, Android), OPOS ADK/OPOS ADK for .NET (Windows), JavaPOS ADK (Windows, Linux)
Drivers Epson Advanced Printer Driver (APD), TM Virtual Port Driver, Mac Printer Driver, CUPS Driver
Software TM Utility (iOS, Android), TM-m50 Utility (Windows Desktop), EpsonNet Config (Windows, Mac), TM Bluetooth Connector, Deployment Tool, Monitoring Tool, TM-m50 Firmware Updater
Audible Alert Optional External Buzzer (OT-BZ20)
LED Indicators Orange LEDs – Error, Paper Out; Blue LEDs – Power, Ethernet, Wireless, Bluetooth
Sensors Paper End, Cover Open, Near-end Sensor
D.K.D. Function Yes
Power Consumption Operating 39.1 W, Standby 1.6 W (AC 115 V/60 Hz)
Power Supply Adapter PS-180 (Serial and Wireless models), Adapter PS-V (Bluetooth model)
Power Saving Yes
Temperature 5 °C to 45 °C
Relative Humidity 10 – 90%
Acoustic Noise Level 55 db
Standards and Approvals EMI FCC Class A, ICES-003 Class A Safety Standard UL62368-1/CSA C22.2 No.62368-1
Dimensions (W x D x H) 5" x 5" x 5"
127 x 127 x 135 mm
Weight 2.87 lb/1,300 g
Color ENB9 (Epson White), EBCK (Epson Black)
Cash Drawer Kick Yes
USB-Network-Tethering⁵ Yes (select SKUs)
Smart Device Charging Yes (2.1 A) (select SKUs)
Data Communication iOS and Android¹ (Bluetooth model only)
USB POS Peripheral Device Support 1 or 3 (varies by model)

Eco Features

Power-saving Mode
ENERGY STAR[®] qualified (select SKUs)
RoHS compliant
Recyclable product⁶
Epson America, Inc. is a SmartWay[®] Transport Partner⁷

Warranty

4-year limited warranty; optional extended warranty available

What's in the Box

OmniLink TM-m50, Power Supply - Adapter PS-180 with AC Cable or Adapter V with AC Cable (varies by model), Power Switch Cover, Roll Paper (for checking initial movement of the printer), Setup Guide, 58 mm Roll Paper Guide

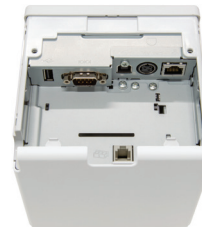
Ordering Information

Model Number	Interfaces	Color*	Part Number
TM-m50	Bluetooth	ENB9	C31CH94011
TM-m50	Bluetooth	EBCK	C31CH94012
TM-m50	Serial	ENB9	C31CH94031
TM-m50	Serial	EBCK	C31CH94032
TM-m50	Wireless	ENB9	C31CH94A9991
TM-m50	Wireless	EBCK	C31CH94A9981

* ENB9: Epson White, EBCK: Epson Black

Accessories	Part Number
Wall Mounting Brackets	OT-WH30
External Buzzer	OT-BZ20
Customer Display	DM-D30
Wireless USB Adapter	OT-WL06

For additional connectivity options, please contact your Epson representative.



TM-m50 Serial



TM-m50 Bluetooth

¹ Requires the use of a beacon dongle connected to TM-m50 printer via the USB-A port. Supports only Apple[®] iBeacon[™] compliant format. The Epson-approved dongle is Laird model BT820. | ² NFC tag requires use of a device that includes NFC reader, and may require additional software. | ³ Rated printhead and cutter lives are only estimates based on normal use of the printer with the following media only, with printer operated at room temperature and normal humidity: Model KT55FA: Papierfabrik August Koehler SE; Model PD160R: Oji Imaging Media Co., Ltd.; Model TF50KS-Y: NIPPON Paper Industries Co., Ltd. Epson's statements about reliability levels are not warranties of the media or Epson's printers, and the only warranties for printers are the limited warranty statements for each printer. See www.epson.com/testedmedia for more information on Tested Media. | ⁴ Feature available for iOS devices and Android devices running Android 10 or later. | ⁵ Only works with iOS devices. | ⁶ For convenient and reasonable recycling options, visit www.epson.com/recycle | ⁷ SmartWay is an innovative partnership of the U.S. Environmental Protection Agency that reduces greenhouse gases and other air pollutants and improves fuel efficiency.

See the latest innovations from Epson Business Solutions at www.epson.com/forbusiness

Better Products for a Better Future[®]
eco.epson.com



Epson America, Inc.
3131 Katella Ave., Los Alamitos, CA 90720

Epson Canada Limited
185 Renfrew Drive, Markham, Ontario L3R 6G3

www.epson.com
www.epson.ca

Contact:

Specifications and terms are subject to change without notice. EPSON is a registered trademark, EPSON Exceed Your Vision is a registered logomark and Better Products for a Better Future is a trademark of Seiko Epson Corporation. OmniLink is a registered trademark and ePOS is a trademark of Epson America, Inc. Apple, Mac and OS X are trademarks of Apple Inc., registered in the U.S. and other countries. iBeacon is a trademark of Apple Inc. Android is a trademark of Google LLC. Windows is either a registered trademark or trademark of Microsoft Corporation in the United States and/or other countries. SmartWay is a registered trademark of the U.S. Environmental Protection Agency. All other product and brand names are trademarks and/or registered trademarks of their respective companies. Epson disclaims any and all rights in these marks. Copyright 2020 Epson America, Inc. Com-SS-Oct-13 CPD-60242 12/20