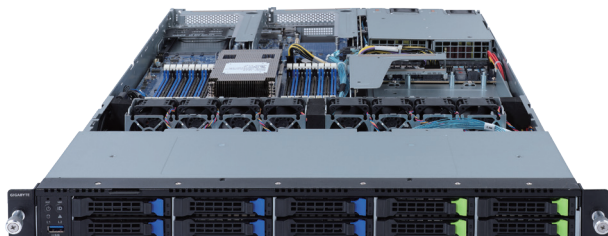
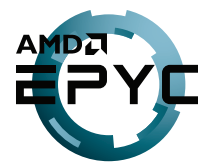


R162-ZA1

Rack Server - 1U UP 10-Bay



Features

- Hardware-level root of trust support
- Single AMD EPYC™ 7003 series processor family
- 8-Channel RDIMM/LRDIMM DDR4, 16 x DIMMs
- 2 x 1GbE LAN ports (Intel® I350-AM2)
- 1 x Dedicated management port
- 10 x 2.5" hot-swappable HDD/SSD bays
- Ultra-Fast M.2 with PCIe Gen4 x4 interface
- 2 x PCIe Gen4 x16 expansion slots
- 1 x internal PCIe Gen4 x16 expansion slot
- 1 x OCP 3.0 Gen4 x16 mezzanine slot
- 1 x OCP 2.0 Gen3 x8 mezzanine slot
- Dual 800W 80 PLUS Platinum redundant power supply

Specification

Dimensions	1U (W438 x H43.5 x D730 mm)	Rear I/O	2 x USB 3.0, 1 x VGA, 2 x RJ45, 1 x MLAN
Motherboard	MZA2-CE0 Rev. 3.0	Backplane I/O	Backplane P/N: 9CBP10A5NR-00 Speed and bandwidth: SAS 12Gb/s, SATA 6Gb/s, PCIe Gen4 x4
CPU	AMD EPYC™ 7003 Series processors Single processor 7nm, Socket SP3 Up to 64-core, 128 threads per processor Compatible with AMD EPYC™ 7002 Series processors Fully support 280W	TPM	1 x TPM header with SPI interface Optional TPM2.0 kit: CTM010
Chipset	System on Chip	Power Supply	Dual 800W 80 PLUS Platinum redundant power supply AC Input: 100-240V
Memory	8-Channel DDR4 memory, 16 x DIMM slots RDIMM/LRDIMM modules up to 128GB supported 3DS RDIMM/LRDIMM modules up to 256GB supported Memory speed: Up to 3200 / 2933 MHz	System Management	Aspeed® AST2500 management controller GIGABYTE Management Console (AMI MegaRAC SP-X)
LAN	2 x 1GbE LAN ports (1 x Intel® I350-AM2) 1 x 10/100/1000 management LAN	OS Compatibility	Windows Server 2016 / 2019 RHEL 8.3 (x64) or later SLES 12 SP5 (x64) / 15 SP2 (x64) or later Ubuntu 18.04.5 LTS (x64) / 20.04 LTS (x64) or later VMware ESXi 6.7 Update3 P03 / 7.0 Update1 or later Citrix Hypervisor 8.2.0 or later
Video	Integrated in Aspeed® AST2500 2D Video Graphic Adapter with PCIe bus interface 1920x1200@60Hz 32bpp	System Fans	8 x 40x40x28mm (25,000rpm)
Storage	10 x 2.5" hot-swappable HDD/SSD bays - 2 x green HDD trays compatible with U.2 devices only - 2 x green HDD trays compatible with U.2 or SATA/SAS devices - 6 x blue HDD trays compatible with SATA/SAS devices only SAS card is required for SAS devices support	Operating Properties	Operating temperature: 10°C to 35°C Operating humidity: 8-80% (non-condensing) Non-operating temperature: -40°C to 60°C Non-operating humidity: 20%-95% (non-condensing)
RAID	Depends on SAS add-on card	Packaging Content	1 x R162-ZA1 1 x CPU heatsinks 1 x Rail kit
Expansion Slots	2 x PCIe Gen4 x16 expansion slots 1 x internal PCIe Gen4 x16 expansion slotL 1 x OCP 3.0 mezzanine slot with PCIe Gen4 x16 bandwidth 1 x OCP 2.0 mezzanine slot with PCIe Gen3 x0 or x8 bandwidth 1 x M.2 slot (M-key, Gen4 x4)	Reference Numbers	Barebone package: 6NR162ZA1MR-00 Rev. A00 - Motherboard: 9MZA2CE0NR-00 - Rail kit: 25HB2-3A0202-K0R - CPU heatsink: 25ST1-443107-A3R - Power supply: 25EPO-208004-L0S
Front I/O	1 x USB 3.0		



Learn more about GIGABYTE server solutions, visit www.gigabyte.com/Enterprise

* All specifications are subject to change without notice. Please visit our website for the latest information.

* AMD, and the AMD Arrow logo, AMD EPYC and combinations thereof are trademarks of Advanced Micro Devices, Inc.

* All other brands, logos and names are property of their respective owners.

© 2021 GIGABYTE Technology Co., Ltd. All rights reserved.