



MULTY

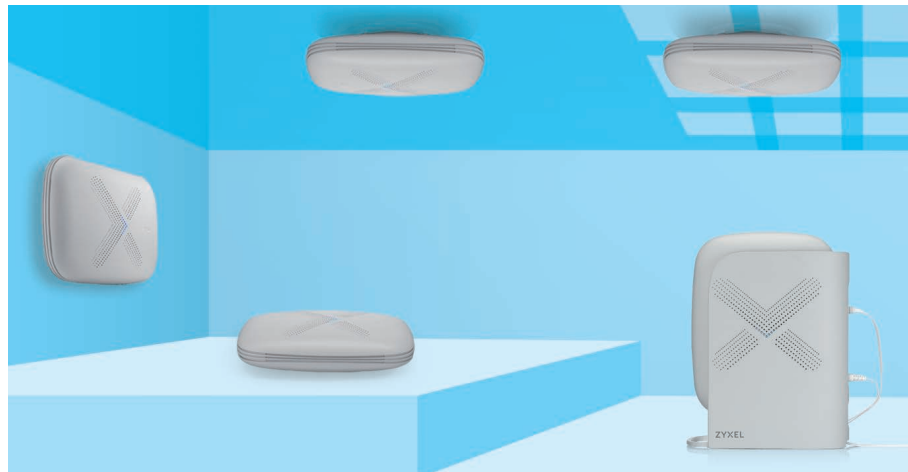
AC3000 Tri-Band WiFi System

The best fit WiFi system for your business

Retails? Restaurants? Offices? The Zyxel Multy Plus is designed as a business-friendly mesh network solution, so that owner can setup their network easily. It creates a fast, reliable and flexible wireless network for your business wireless network for your business. Whether your business environment is large or small, the Multy Plus keeps you always connected.

Fully flexibility, so much easier!

Equipped with web-based advanced settings and stress-free app management, the Zyxel Multy Plus gives you peace of mind to simple deploy. The Multy Plus' concise and clever space-saving installation provides a simple setup with 5-in-1 placement options.



Tri-Band mesh WiFi system bring strong WiFi signals throughout your commercial location



Flexible placement options: desktop, stand holder, wall/ceiling, T-bar mount



Experience hassle-free installation with web browser or Multy app



Visitor WiFi hotspot with fully customizable captive portal



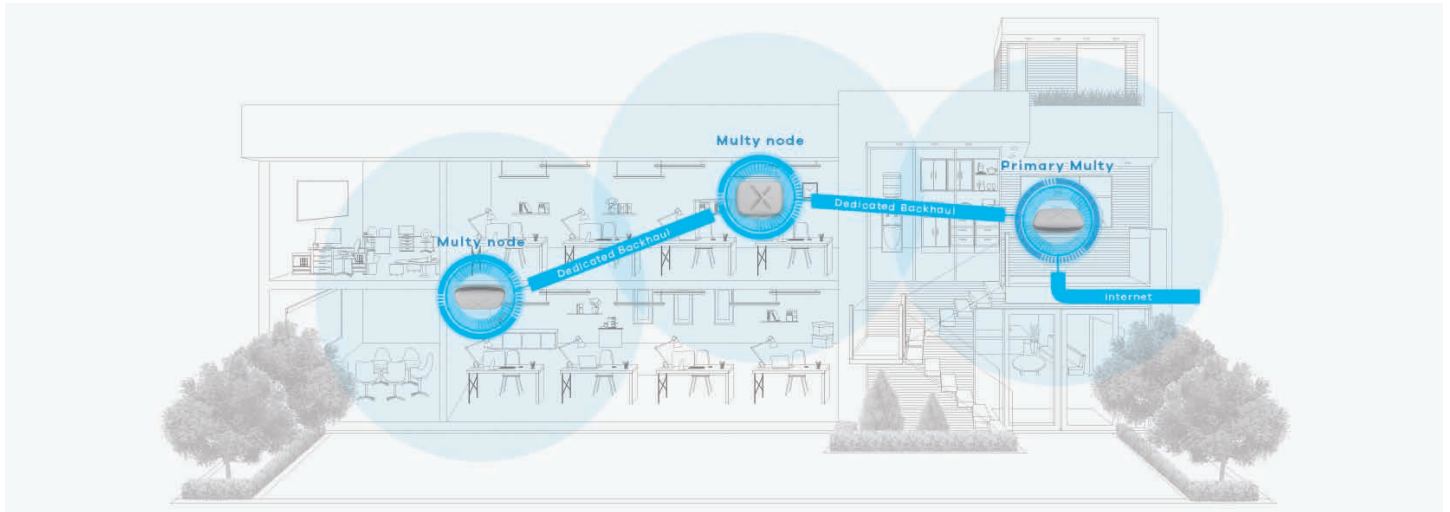
Three WiFi networks with secured traffic separation



Benefits

Extend your WiFi coverage further with Daisy-chaining

Daisy-chaining enables the Zyxel Multy Plus to create a continuous wireless connection to reach the entire workplace. No matter where you are in the workplace, you can deploy multiple Multy Plus nodes throughout your environment providing even greater wireless coverage.



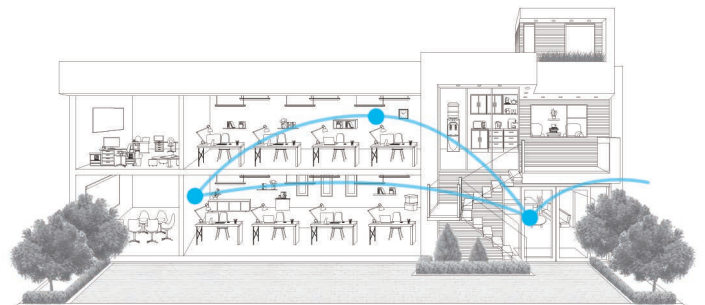
Powerful Tri-Band design delivers the ultimate WiFi experience

Experience no degradation in speed and reliability with its dedicated wireless backbone for creating a large wireless network coverage in your business environment.



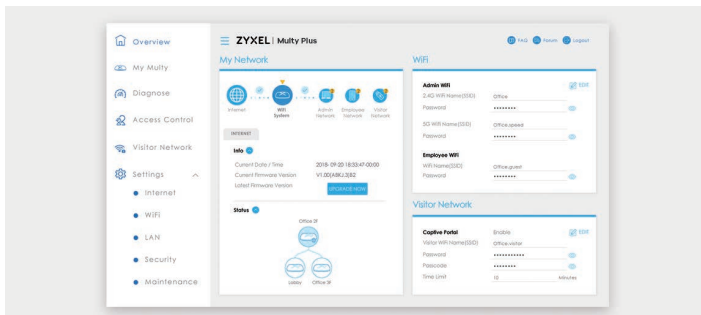
Mesh technology is the best solution to the WiFi congestion

A mesh-based WiFi network helps organize an evenly spread signal. It can automatically connect your devices to the fastest path for stronger signal strength without effort.



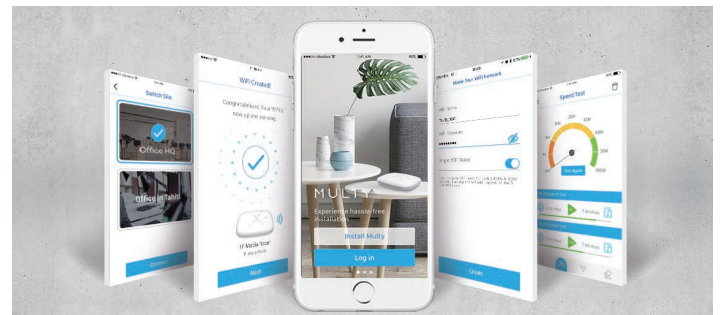
Advanced WiFi settings to customize your network

The web-based interface enables the Zyxel Multy Plus users to manage their network on a computer and access advanced features.



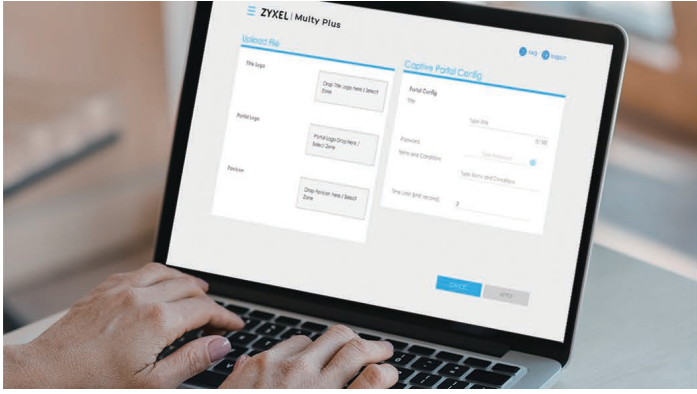
Easy installation and management with user-friendly Multy app

The Multy app makes it easy to get your business network well underway, make sure your network is healthy all through your smartphone.



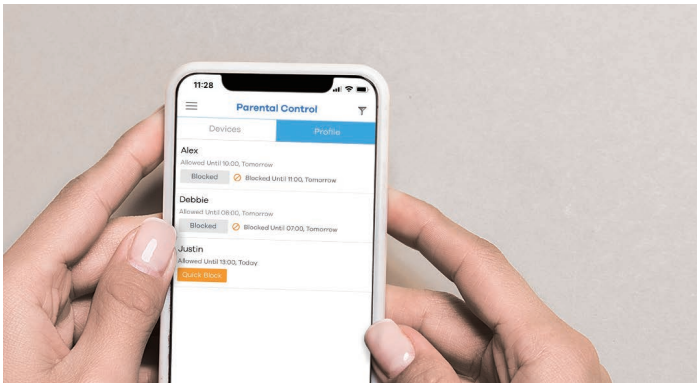
Visitor WiFi hotspot with fully customizable captive portal

Provide your visitors with fast and reliable WiFi network without interfering your own business network. Enable a web captive portal to provide your terms and condition for your visitors' WiFi connection.



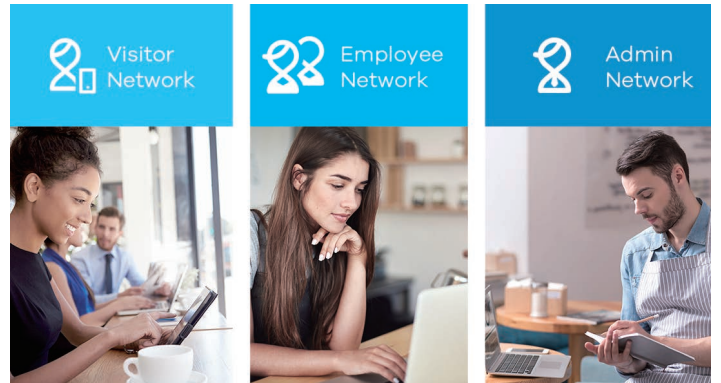
Keeping the Internet safe for connected devices

Set Internet limitation for your connected devices with our user-friendly Multy app. Support intervals in schedule settings and timer based with device blocking, fine tune the amount of time for every connected device.



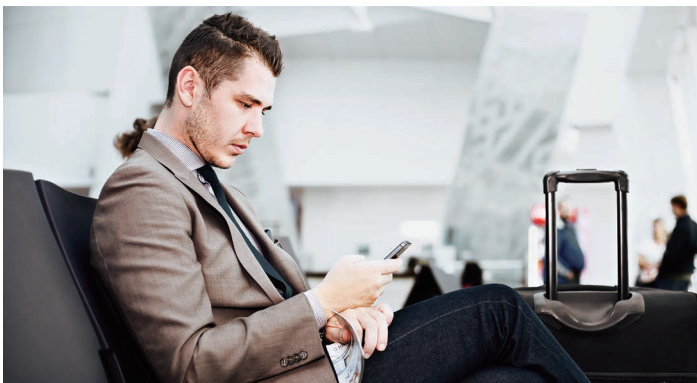
Visitor WiFi network ensures business privacy

Create up to three WiFi networks with secured traffic separation through our web browser management tool without exposing your data privacy. Keep your network secure by offering a complete segregated visitor WiFi.



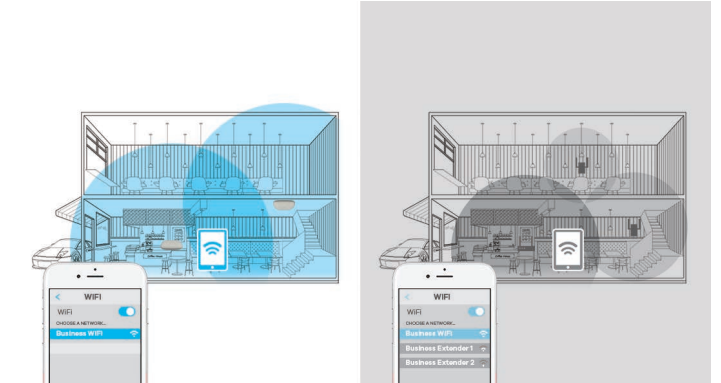
Remote access your Multy Plus system from your mobile phone anywhere

Keep your business network up and running, even if you're not on-site. Maintain multiple Multy Plus systems in different remote locations through your phone wherever/wherever you are.



Roam seamlessly on WiFi throughout your business area

Create one unified WiFi network for all your business devices, the Zyxel Multy Plus automatically connects to the stronger signal that provide the fastest speeds as you move through the Multy Plus node without the need to reconnect.



Specifications

System Specifications

Speed Rating (per unit)

- AC3000 (1733+867+400 Mbps)

Coverage

- Up to 5000 sq. ft./464 m²*

Wireless Standard

- IEEE 802.11 b/g/n 2.4 GHz — 256QAM support
- IEEE 802.11 a/n/ac Wave 2, 5 GHz — 256QAM support

Wireless Speed

- Transmit & Receive:
 - 1733 Mbps** for 5 GHz (dedicated backhaul)
 - 867 Mbps** for 5 GHz
 - 400 Mbps** for 2.4 GHz

Web Browser

- Advanced wired & wireless setup and management
- Diagnose & speed test
- Access control
- Visitor network & captive portal

App

Multy app

- Easy to setup
 - Support myZykelCloud SSO (Single-Sign-On) system
 - Quick Bluetooth setup
 - Support wireless site survey to identify optimum installation locations between node to node
 - Support combining/separating 2.4 GHz and 5 GHz WiFi network from each other in WiFi system
- Support Internet access control
 - Block or allow specific group based on time schedule
 - Flexible override Internet access for specific device group
- Support visitor network setting
 - Share network name and password via QR code for visitors
 - Monitor of active concurrent visitor devices connected
- Diagnose network via speed test
- Push notification

- New device connected
- New firmware available
- Speed test result
- Remote management
- Automatic updates for new features
- Support iOS 9/Android 5.0 or later
- Support language: EN/ZH/DE/ES/FR/IT/PT

Hardware Specifications

- Memory: 4 GB eMMC and 512 MB RAM
- WAN: One 10/100/1000 Mbps Ethernet RJ-45 port with auto MDI/MDIX support
- LAN: Three 10/100/1000 Mbps Ethernet RJ-45 ports with auto MDI/MDIX support
- Antenna: 9 Internal Antennas
- One USB 2.0 port
- LED indicator: Status indication/ Auto dimming
- Buttons: Reset
- Power: 12 V DC, 3 A
- Power consumption: 25 watt max

Physical Specs (per unit)

- Item dimensions (WxDxH): 236 x 178 x 51.5 mm (9.3" x 7.0" x 2.0")
- Item weight: 740 g (1.63 lb.)
- Packing dimensions (WxDxH): 250 mm x 128 mm x 339 mm (9.8" x 5.0" x 13.3")
- Packing weight: 1884 g (4.15 lb.)

Environmental Specifications

Operating Environment

- Temperature: 0°C to 40°C (32°F to 104°F)
- Humidity: 10% to 90% (Non-condensing)

Storage Environment

- Temperature: -30°C to 70°C (-22°F to 158°F)
- Humidity: 10% to 95% (Non-condensing)

Certifications

- Safety: CE-LVD, BSMI
- EMC: CE, FCC, BSMI, NCC

Package Contents

- Multy Plus
- Power adapter
- Ethernet cable
- Quick start guide
- Mounting Kits

Support

- Voice control with Amazon Alexa
- Forum: homeforum.zykel.com
- Live-chat in forum
- App feedback included

* Cover up to 7,500 sq. ft./ 696 m² with three nodes of Multy Plus

** The maximum wireless data transfer rates of up to 400 Mbps at 2.4 GHz and 867/1733 Mbps at 5 GHz in simultaneous transmission are derived from the IEEE Standard 802.11 specifications. Actual data transfer rates may vary from network conditions including: distance, network traffics, building site material/construction, interference from other wireless devices and other adverse factors.

Installation from the web interface at <http://Zykelwifi.com> or <http://Zykelwifi.net>
For more product information, visit us on the web at www.zykel.com

Copyright © 2020 Zykel and/or its affiliates. All rights reserved.
All specifications are subject to change without notice.

Download App

For Multy Installation



Q Zykel Multy

