

## PERFORMANCE

### Processor

Qualcomm® Snapdragon™ 870 (8C, 1x A77 @3.2GHz + 3x A77 @ 2.42GHz + 4x A55 @1.8GHz)

### Graphics

Integrated Qualcomm Adreno™ 650 GPU

### Chipset

Qualcomm SoC Platform

### Memory

8GB Soldered LPDDR5

### Storage

128GB UFS 3.0

### Card Reader

None

### Storage Support

128GB UFS 3.0 on systemboard

### Speakers

Quad JBL® speakers, Qualcomm codec WCD9385, 2W x2 (on the top), 2.5W x2 (on the bottom) with 5cc audio chamber, Lenovo® Premium Audio (LPA) Solution design, optimized with Dolby® Atmos®

### Microphone

3x, Array

### Camera

Front 8.0MP, ToF Sensor

### VoiceCall

No

### Sensors

- Accelerometer (G) sensor
- Ambient light sensor (ALS)
- Gyroscope sensor
- ToF sensor
- e-Compass

### Vibration Motor

No support

### Battery

Integrated 10000mAh (Min.) / 10200mAh (Typ.)

### Power Adapter

10V / 3A

## DESIGN

### Display

13" 2K (2160x1350) LTPS 400nits Glossy, 60Hz, Dolby Vision™, Touch

### Touchscreen

10-point Multi-touch

### Case Material

Plastic, Alcantara® Backing

### Pen<sup>[1]</sup>

Pen Upgradable (Purchase Separately)

### Dust and Water Resistant

IP52

### Dimensions (WxDxH)<sup>[2]</sup>

293.35 x 203.98 x 6.2-24.9 mm (11.54 x 8.03 x 0.24-0.98 inches)

### Weight<sup>[3]</sup>

Around 830 g (1.83 lbs)

### Case Color

Shadow Black

## SOFTWARE

### Operating System<sup>[4]</sup>

Android™ 11 or Later

## CONNECTIVITY

### WLAN + Bluetooth®

Wi-Fi® 6, 11ax 2x2 + BT5.2

### WWAN

None

### Location Services

A-GNSS (Assisted GNSS)

### Standard Ports

- 1x Micro HDMI® input with support of HDCP 1.4
- 1x USB-C® 3.1 (support data transfer, charging and DisplayPort™ 1.4)

### Monitor Cable

1x Micro HDMI to HDMI

## SERVICE

### Base Warranty<sup>[5]</sup>

2-year, Courier with 1-year Battery

## ACCESSORIES

### Bundled Accessories

USB-C to Audio Jack + Micro HDMI to HDMI Adapter

## CERTIFICATIONS

### Green Certifications

- ENERGY STAR® 8.0
- RoHS compliant

### Other Certifications

TÜV Rheinland® Low Blue Light (Software Solution)

## MODEL

**Product** : Lenovo® YT-K606F

**TopSeller** : No **Announce Date** : 2021-03-16

**EAN / UPC / JAN** : 195713455350



Product image is a sample, it may not match the real color of this model

Note:

[1] For details upon pen compatibility, please check the file "Lenovo Android Tablet - Option Compatibility Matrix" from <https://support.lenovo.com/solutions/accs-guide>

[2] The system dimensions may vary depending on configurations.

[3] The system weight is approximate and based on results in Lenovo lab, which varies depending on the source of component, variance of the distribution of each component, and manufacturing process. It may not be the exact weight for each specific model.

[4] For latest operating system and security patches deliver plan, please visit <https://support.lenovo.com/solutions/ht501098>.

[5] For warranty upgrade service, please go to <https://smartfind.lenovo.com/services>. To learn more details of warranty policy, please access <https://pcsupport.lenovo.com/warranty>.

· Lenovo reserves the right to change specifications without notice.

To see more note information, please link to <https://psref.lenovo.com/Detail/1592?M=ZA8E0005SE>

## Premium Care - Advanced Support from Real People. Real Fast.



### REAL PERSON

Choose how you want to reach us – through phone, chat, or email – our expert technicians will take care of your device issues.



### REAL FAST

Highly trained technicians will provide you real-time solutions, whatever the issue, on your first contact. If the issue can't be solved remotely, our team will schedule a repair via depot / carry-in support to resolve your issue.



### HASSLE FREE

'Getting started' and 'how-to' assistance for hardware and software. Easy solutions that are simple to reach – that's how Premium Care delivers you the ideal support experience.

## Accidental Damage Protection One - Protection for your Tablet from the unexpected.

Avoid the hassles of unexpected damage & repair costs. With coverage for drops, spills, electric surges, and broken LCD screens, accidental damage protection makes it easy to repair to your Tablets, permitting a single repair during the coverage period.

## Base Warranty - Included with the system you purchase with default 1-year coverage window.

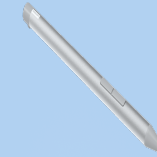
## Lenovo Warranty Extensions & Upgrades (up to 3 years duration) - Gain complete peace of mind by extending your base warranty to up to 3 years and minimize unexpected repair costs.

- Pick up & return courier / Depot support
- Replaceable unit service\*

\*Applicable in some regions only. Please check with your local services team for more details.

Lenovo may not offer the products, services or features discussed in this document in all regions. Lenovo may withdraw an offering at any time. Consult your local representative for information on offerings available in your area. Lenovo reserves the right to change specifications or other product information without notice. Lenovo is not responsible for photographic or typographical errors. Lenovo provides this publication "as is" without warranty of any kind, either express or implied, including the implied warranties of merchantability or fitness for a particular purpose.

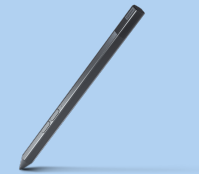
## Recommended Accessories



### Lenovo Active Pen 3 (2023)

ZG38C04479

With 4,096 levels of pressure and tilt detection, the Lenovo Active Pen 3 (2023) affords users the highest level of precision and control as they sketch or just take notes.



### Lenovo Precision Pen 2(US)

ZG38C03380

With 4,096 levels of pressure and tilt detection, the Lenovo Precision Pen 2 affords users the highest level of precision and control as they sketch or just take notes. With up to 100 hours usage\*, write or draw all d...

For a full list of accessories and services, please visit:  
<https://smartfind.Lenovo.com>

Lenovo

PSREF  
Product Specifications  
Reference