

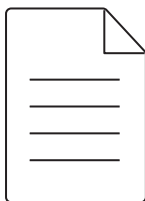
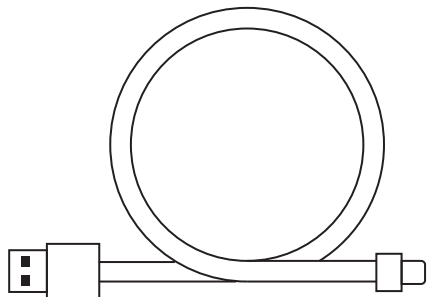
G535

Wireless Gaming Headset
Casque gaming sans fil

SETUP GUIDE | GUIDE D'INSTALLATION



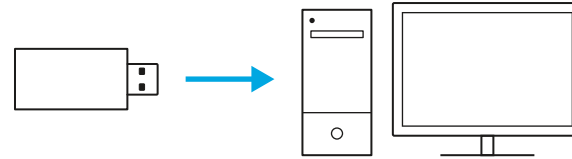
logitech 



ENGLISH	3
FRANÇAIS	7
ESPAÑOL	11
PORTUGUÊS	15

SETUP INSTRUCTIONS

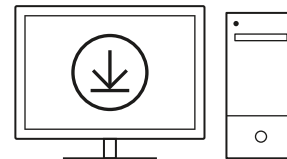
- Insert receiver into the USB port of your PC.



- Short press to turn ON.

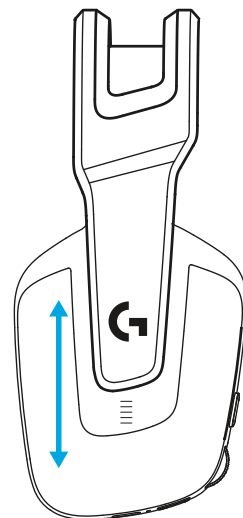


- (Optional) Download Logitech G HUB software to access advanced features. Download at logitechG.com/ghub

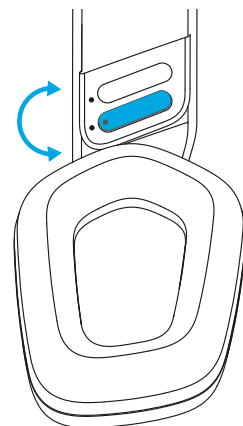


logitechG.com/ghub

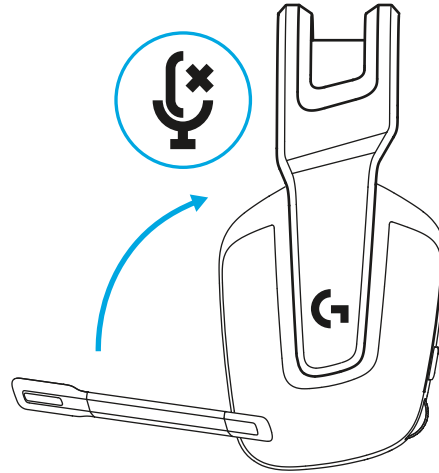
- The earcups can be adjusted up and down.



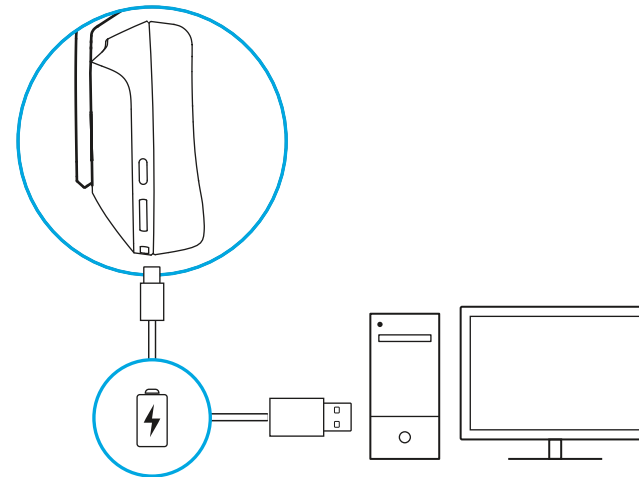
- The length of the headband can be adjusted.



- Flip boom up to mute.

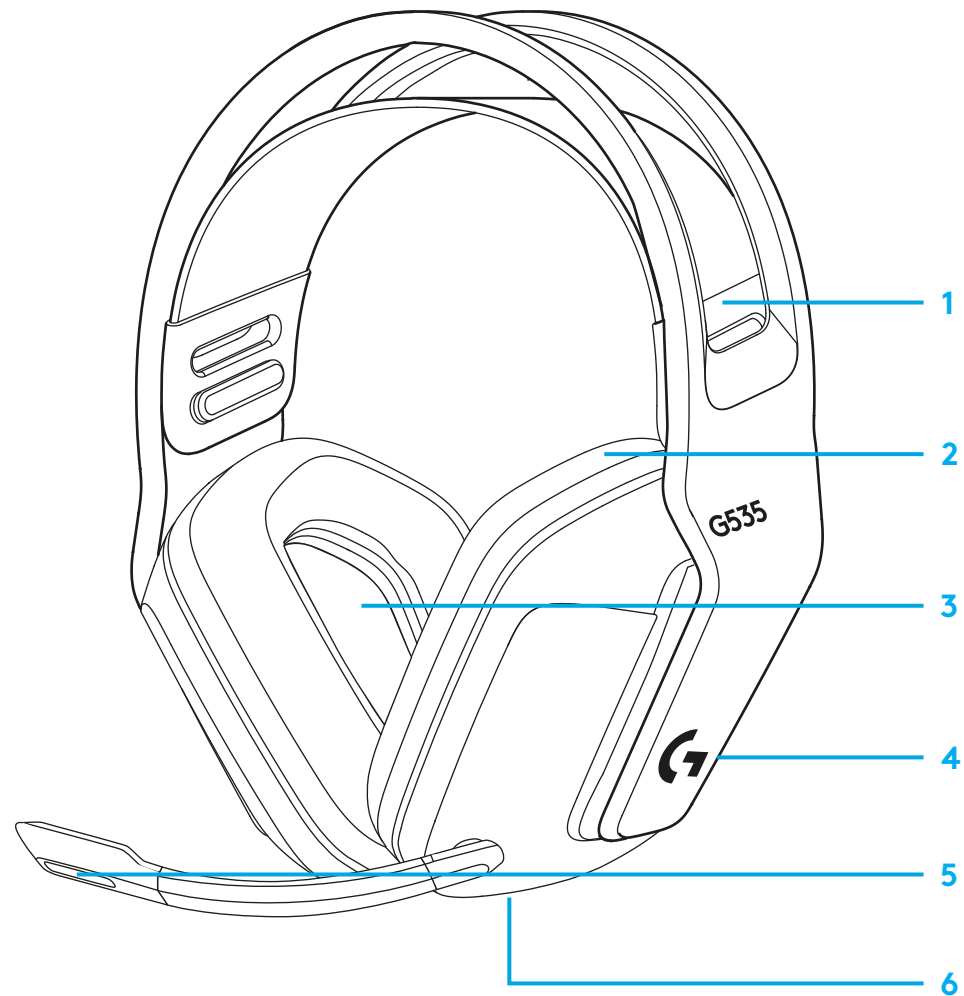


- Charge Headset when low on battery.



FEATURES

- 1 Adjustable, reversible suspension band
- 2 Memory foam earpads
- 3 40 mm drivers
- 4 On-ear volume control
- 5 Flip-to-mute 6-mm mic
- 6 USB-C charging port

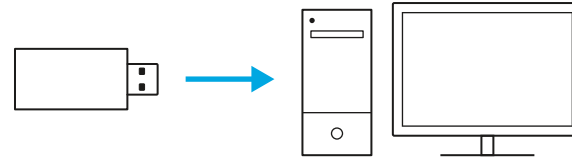


FREQUENTLY ASKED QUESTIONS

www.logitechG.com/support/G535

INSTRUCTIONS D'INSTALLATION

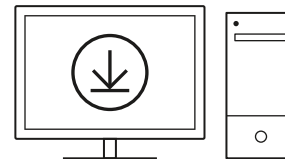
- Insérez le récepteur dans le port USB de votre PC.



- Appuyez brièvement pour mettre le casque sous tension.

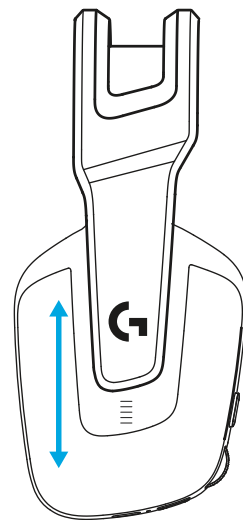


- (Facultatif) Téléchargez le logiciel Logitech G HUB pour accéder à des fonctionnalités avancées. Téléchargez-le sur logitechG.com/ghub

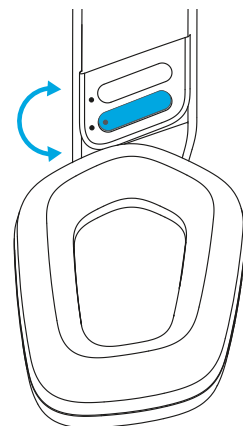


logitechG.com/ghub

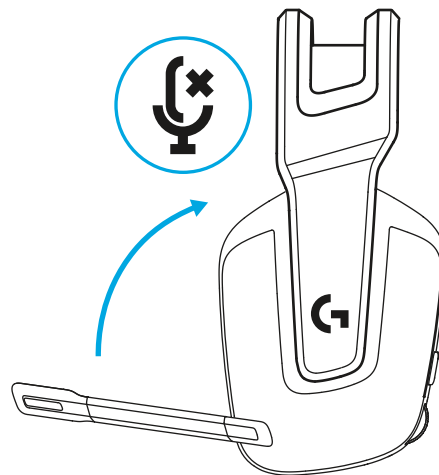
- Les oreillettes peuvent être ajustées de haut en bas.



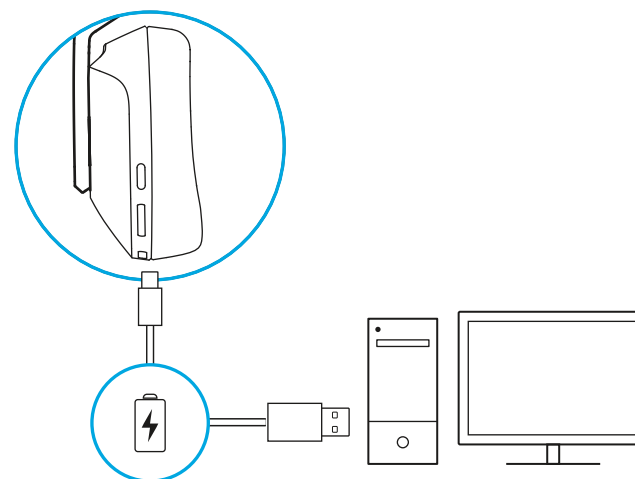
- La longueur du bandeau peut être ajustée.



- Déplacez la tige du micro vers le haut pour mettre en sourdine.

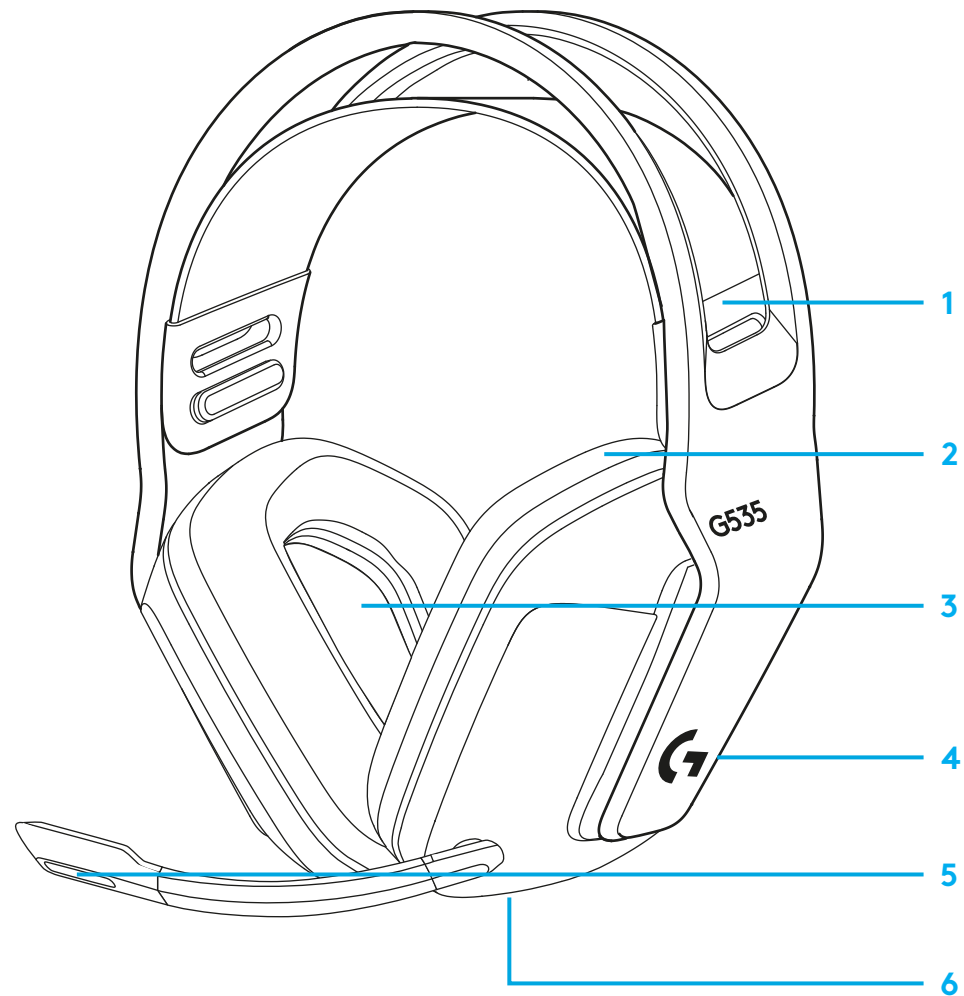


- Chargez le casque lorsque la batterie est faible.



CARACTÉRISTIQUES

- 1 Bandeau de suspension réglable et réversible
- 2 Oreillettes à mémoire de forme
- 3 Transducteurs 40 mm
- 4 Contrôle du volume sur l'oreillette
- 5 Micro 6 mm avec fonction sourdine flip-up
- 6 Port de charge USB-C

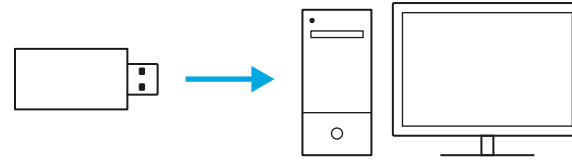


QUESTIONS FRÉQUENTES

www.logitechG.com/support/G535

INSTRUCCIONES DE INSTALACIÓN

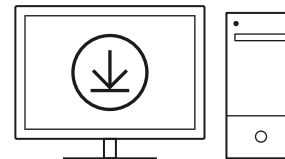
- Inserta el receptor en el puerto USB de la PC.



- Presiona brevemente para encender los audífonos.

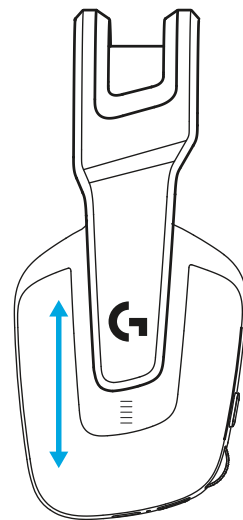


- (Opcional) Descarga el software Logitech G HUB para poder usar las funciones avanzadas. Descargable desde logitechG.com/ghub

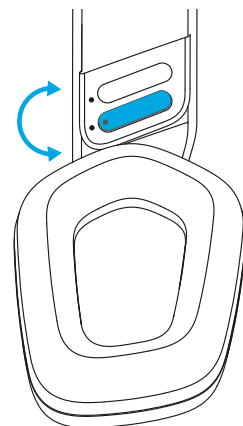


logitechG.com/ghub

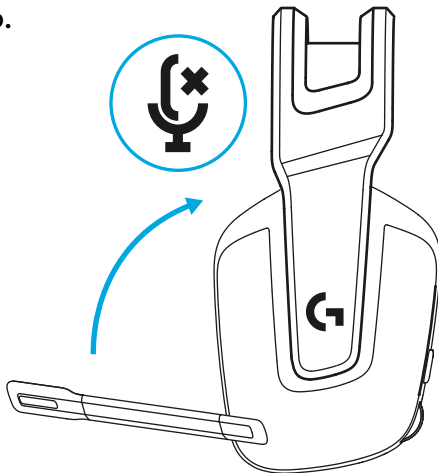
- Las copas de los audífonos se pueden subir y bajar.



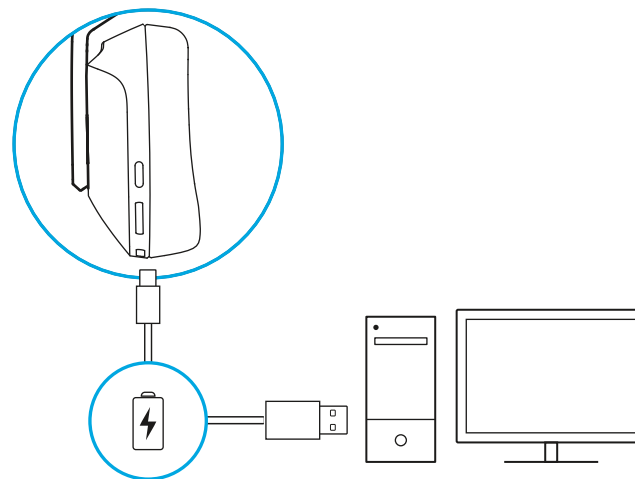
- La longitud de la diadema también es ajustable.



- Gira hacia arriba la varilla del micrófono para silenciarlo.

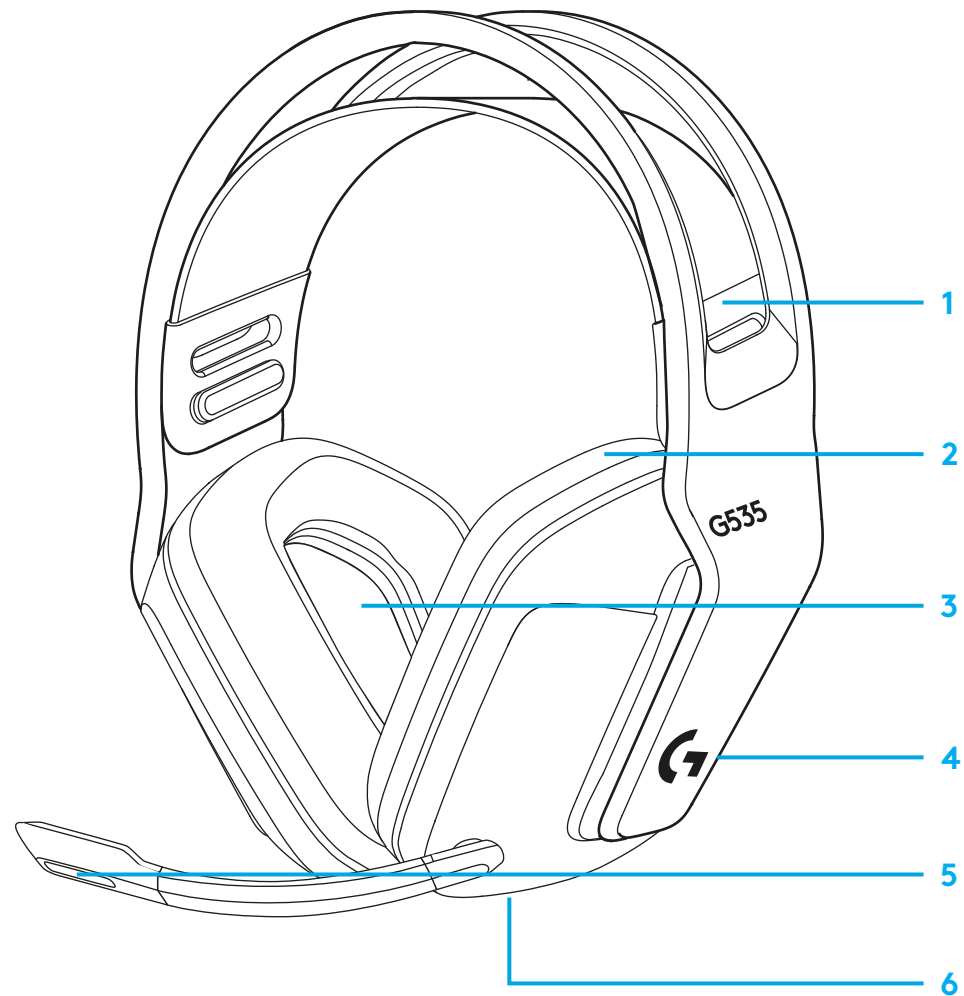


- Carga los audífonos cuando quede poca batería.



CARACTERÍSTICAS

- 1 Banda de suspensión ajustable y reversible
- 2 Almohadillas de espuma viscoelástica
- 3 Transductores de 40 mm
- 4 Control de volumen en el audífono
- 5 Micrófono volteable para silenciar de 6 mm
- 6 Puerto de carga USB-C

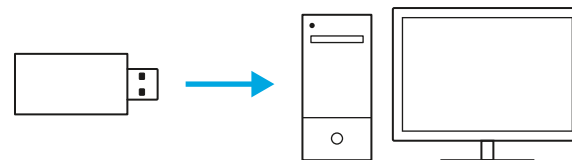


PREGUNTAS MÁS FRECUENTES

www.logitechG.com/support/G535

INSTRUÇÕES DE CONFIGURAÇÃO

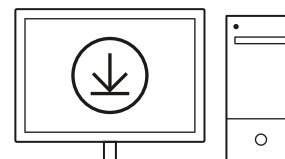
- Insira o receptor na porta USB do seu PC.



- Pressione brevemente para LIGAR.

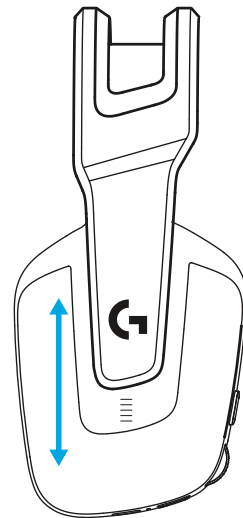


- (Opcional) Faça o download do software Logitech G HUB para acessar recursos avançados.
Download em LogitechG.com/GHUB

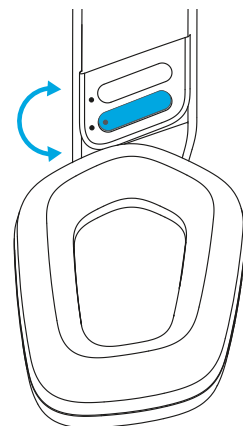


logitechG.com/gHub

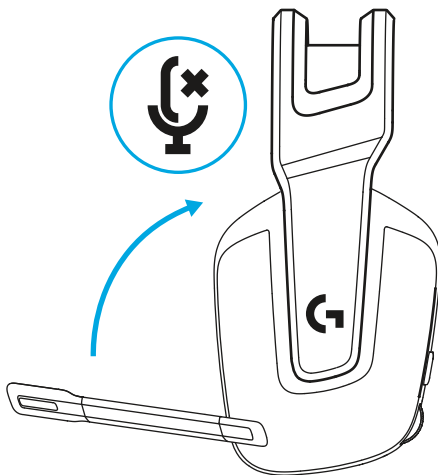
- Os fones de ouvido podem ser ajustados para cima e para baixo.



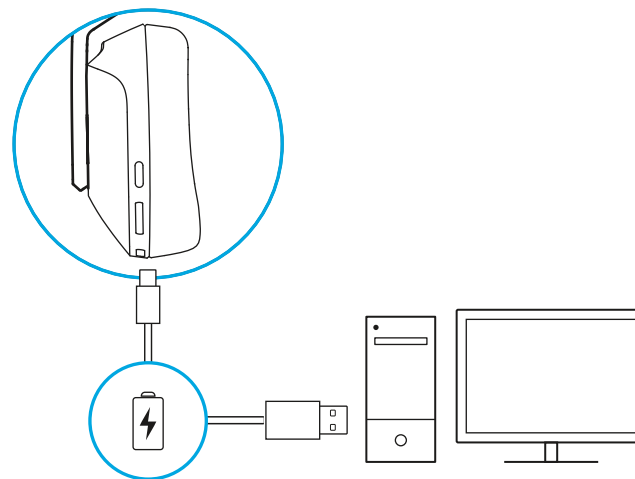
- O comprimento do arco de cabeça pode ser ajustado.



- Mova o braço do microfone para cima para ativar mudo.

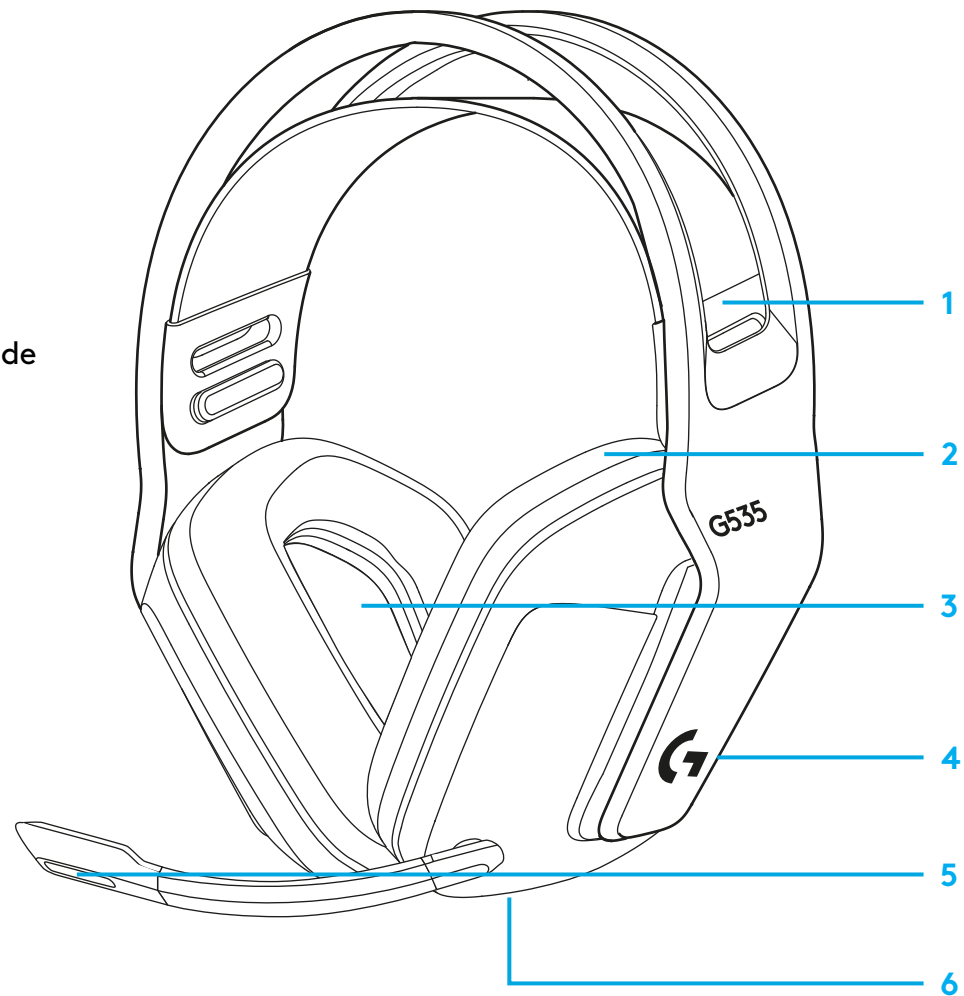


- Carregue o headset quando a bateria estiver fraca.



RECURSOS

- 1 Faixa de suspensão ajustável e reversível
- 2 Fones acolchoados de espuma viscoelástica
- 3 DRIVERS de 40 mm
- 4 Controle do volume na orelha
- 5 Microfone de 6 mm com funcionalidade levantar-para-silenciar
- 6 Porta de carregamento USB-C



PERGUNTAS FREQUENTES

www.logitechG.com/support/G535



©2022 Logitech. Logitech, Logitech G, Logi and their respective logos are trademarks or registered trademarks of Logitech Europe S.A. and/or its affiliates in the U.S. and other countries. All other trademarks are the property of their respective owners. Logitech assumes no responsibility for any errors that may appear in this manual. Information contained herein is subject to change without notice.

© 2022 Logitech. Logitech, Logitech G, Logi et leurs logos respectifs sont des marques commerciales ou déposées de Logitech Europe S.A. et/ou de ses sociétés affiliées aux États-Unis et dans d'autres pays. Toutes les autres marques sont la propriété exclusive de leurs détenteurs respectifs. Logitech décline toute responsabilité en cas d'erreurs susceptibles de s'être glissées dans le présent manuel. Les informations énoncées dans ce document peuvent faire l'objet de modifications sans préavis.

WEB-621-002133.002