

# Thecus WSS Getting Started Guide

## W2000/W4000/W5000/W5810 series

---

## ❖ Copyright and Trademark Notice

---

Thecus and other names of Thecus products are registered trademarks of Thecus Technology Corp. Microsoft, Windows, and the Windows logo are registered trademarks of Microsoft Corporation. Apple, iTunes and Apple OS X are registered trademarks of Apple Computers, Inc. All other trademarks and brand names are the property of their respective owners. Specifications are subject to change without notice.

Copyright © 2015 Thecus Technology Corporation. All rights reserved.

## ❖ About This Manual

---

All information in this manual has been carefully verified to ensure its correctness. In case of an error, please provide us with your feedback. Thecus Technology Corporation reserves the right to modify the contents of this manual without notice.

Product name: W2000/W2000+/W4000/W4000+/W5000/W5000+/W5810 series

Manual Version: 1.3

Release Date: November 2015

## ❖ Limited Warranty

---

Thecus Technology Corporation guarantees all components of Thecus NAS products are thoroughly tested before they leave the factory and should function normally under general usage. In case of any system malfunctions, Thecus Technology Corporation and its local representatives and dealers are responsible for repair without cost to the customer if the product fails within the warranty period and under normal usage. Thecus Technology Corporation is not responsible for any damage or loss of data deemed to be caused by its products. It is highly recommended that users conduct necessary back-up practices.

Check the functions that are available on your particular Thecus WSSE NAS model at:

<http://WSS.thecus.com>

## ❖ Safety Warnings

---

For your safety, please read and follow the following safety warnings:

- Read this manual thoroughly before attempting to set up your Thecus IP storage.
- Your Thecus IP storage is a complicated electronic device. DO NOT attempt to repair it under any circumstances. In the case of malfunction, turn off the power immediately and have it repaired at a qualified service center. Contact your vendor for details.
- DO NOT allow anything to rest on the power cord and DO NOT place the power cord in an area where it can be stepped on. Carefully place connecting cables to avoid stepping or tripping on them.
- Your Thecus IP storage can operate normally under temperatures between 5°C and 40°C, with relative humidity of 20% – 85%. Using Thecus IP storage under extreme environmental conditions could damage the unit.
- Ensure that the Thecus IP storage is provided with the correct supply voltage (W2000/W2000+: Input 12Vdc, 5.0A, W4000/W4000+: Input 12Vdc, 8.5A, W5000/W5000+/W5810: Input 100-240Vac, 60-50Hz, 3-1.3A). Plugging in Thecus IP storage an incorrect power source could damage the unit.
- Do NOT expose Thecus IP storage to dampness, dust, or corrosive liquids.
- Do NOT place Thecus IP storage on any uneven surfaces.
- DO NOT place Thecus IP storage in direct sunlight or expose it to other heat sources.
- DO NOT use chemicals or aerosols to clean Thecus IP storage. Unplug the power cord and all connected cables before cleaning.
- DO NOT place any objects on the Thecus IP storage or obstruct its ventilation slots to avoid overheating the unit.
- Keep packaging out of the reach of children.
- If disposing of the device, please follow your local regulations for the safe disposal of electronic products to protect the environment.
- Risk of explosion if battery is replaced by an incorrect type.
- Dispose of used batteries according to the instructions

## ❖ Table of Contents

---

<b>Copyright and Trademark Notice.....</b>	<b>ii</b>
<b>About This Manual.....</b>	<b>ii</b>
<b>Limited Warranty. ....</b>	<b>ii</b>
<b>Safety Warnings.....</b>	<b>iii</b>
<b>§Chapter 1: Introduction.....</b>	<b>v</b>
<b>1.1 Package Contents.....</b>	<b>v</b>
<b>1.2 W2000/W2000+.....</b>	<b>vi</b>
<b>1.3 W4000/W4000+. ....</b>	<b>viii</b>
<b>1.4 W5000/W5000+. ....</b>	<b>x</b>
<b>1.5 W5810.....</b>	<b>xii</b>
<b>§Chapter 2: Hardware Installation. ....</b>	<b>1</b>
<b>§ Chapter 3: Getting started. ....</b>	<b>3</b>
<b>3.1 Hardware installation. ....</b>	<b>3</b>
<b>3.2 First Power On. ....</b>	<b>3</b>
<b>3.3 Essentials Administrative Dashboard.....</b>	<b>4</b>
• Configure Essentials Administrative Dashboard.....	4
• To set up a new Active Directory environment.....	4
• To deploy your WSSE NAS in an existing Active Directory environment. ....	7
<b>3.4 Connect to WSSE using Remote Desktop Connection. ....</b>	<b>11</b>
<b>3.5 Connect your computer to the WSSE by using the Connector software. .</b>	<b>11</b>
<b>§Chapter 4: System Recovery. ....</b>	<b>12</b>
<b>§Appendix: Frequently Asked Questions. ....</b>	<b>13</b>

# §Chapter 1: Introduction

---

## 1.1 Package Contents

- **W2000/W2000+/W4000/W4000+/W5000/W5000+/W5810**
  - ◆ System Unit x1
  - ◆ Licensing key x1
  - ◆ QIG (Quick Installation Guide) x1
  - ◆ Ethernet Cable x1
  - ◆ Accessory bag x1
  - ◆ Multiple Languages Warranty Card x1
  - ◆ Power adapter x1 (except W5000/W5000+/W5810)
  - ◆ Power cord x1

Please check to see if your package is complete. If you find that some items are missing, contact your dealer.

## 1.2 W2000/W2000+:

- **Front Panel**

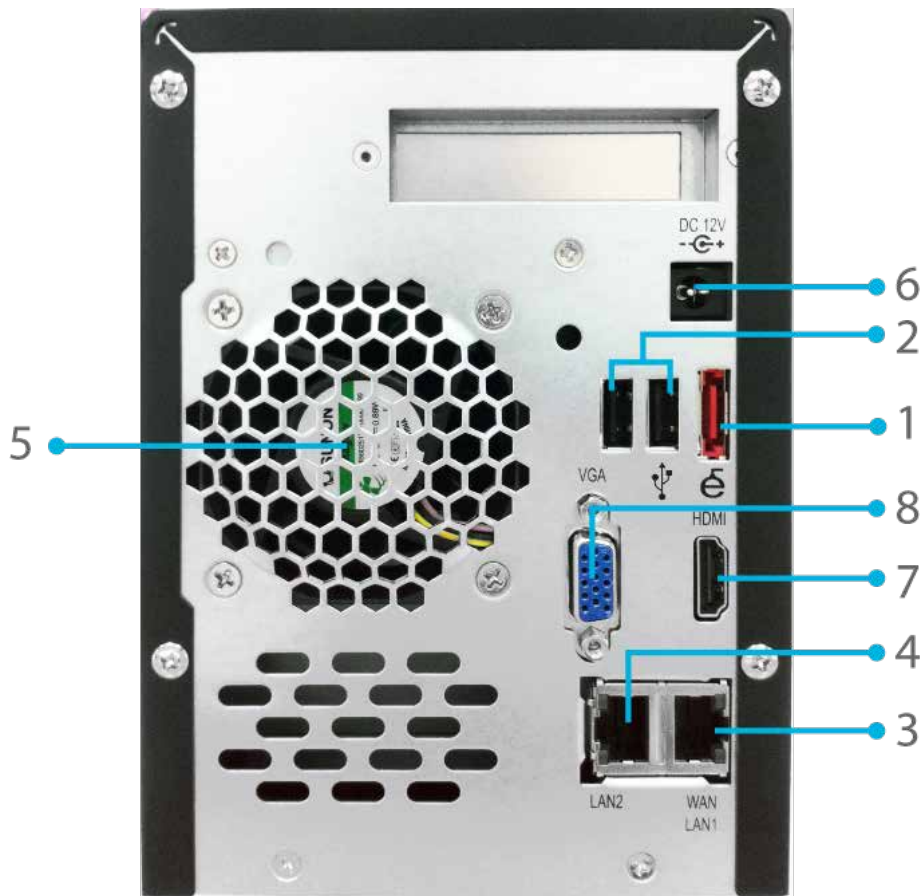
The Thecus W2000/W2000+'s front panel shows the device's indicators and hard disk install slots:



Front Panel	
Item	Description
1. Power Button	Powers the W2000/W2000+ on/off.
2. USB Port	USB 3.0 port for compatible USB devices, such as digital cameras, USB disks, and USB printers.
3. Card reader	Supports SD/SDHC/MMC cards via USB interface.
4. HDD Tray	Two HDD trays support 4x 3.5" or 4 x 2.5" HDDs

- **Rear Panel**

The W2000/W2000+'s rear panel features ports and connectors.

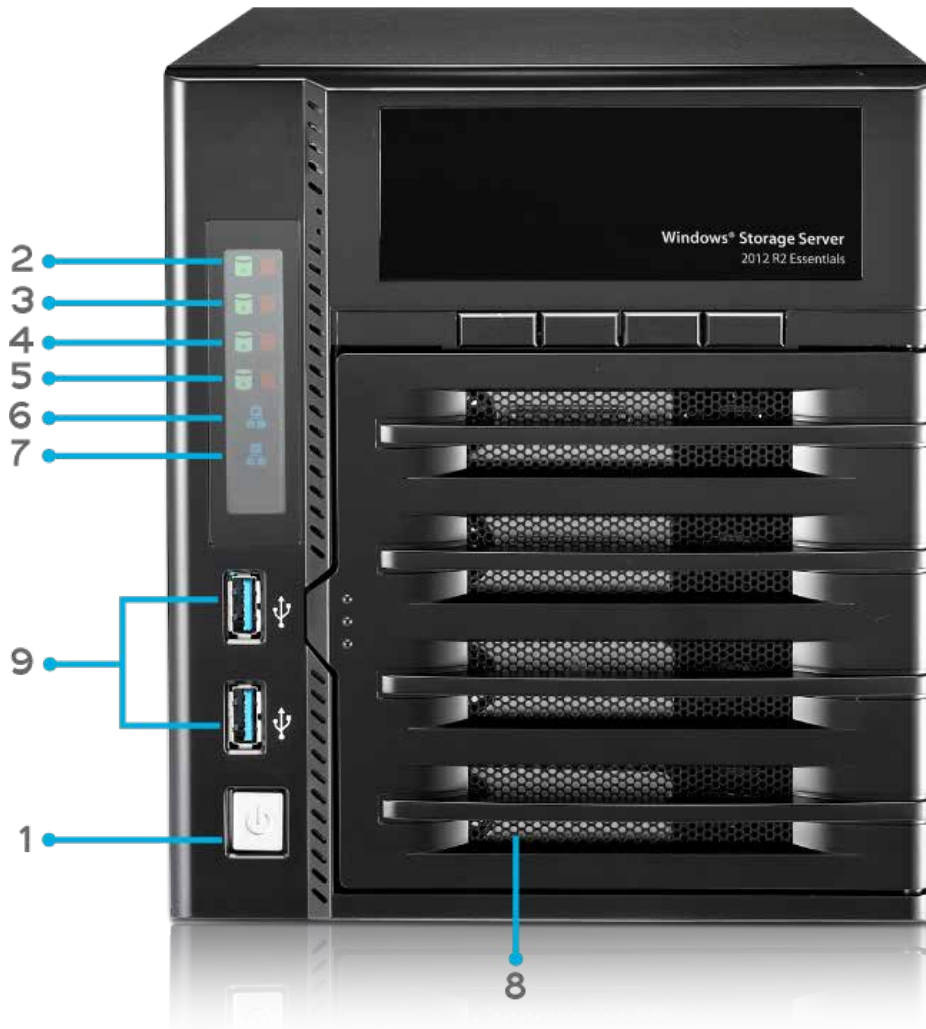


Back Panel	
Item	Description
1. eSATA Port	eSATA port for high-speed external storage expansion.
2. USB 2.0 Port	USB 2.0 port for compatible USB devices, such as digital cameras, USB disks, and USB printers.
3. WAN/LAN1 Port	WAN/LAN1 port for connecting to an Ethernet network through a switch or a router.
4. LAN2 Port	LAN2 port for connecting to a local Ethernet network through a switch or a router.
5. System Fan	System fan that exhausts heat from the unit.
6. Power Connector	To connect the power adaptor
7. HDMI	For Video/Audio out
8. VGA	For Video out

### 1.3 W4000/W4000+:

- **Front Panel**

The Thecus W4000/W4000+'s front panel shows the device's indicators and hard disk install slots:



Front Panel	
Item	Description
1. Power Button	Powers the W4000/W4000+ on/off.
2. HDD1 LED	Yellow: HDD activity Red: HDD failure
3. HDD2 LED	Yellow: HDD activity Red: HDD failure
4. HDD3 LED	Yellow: HDD activity Red: HDD failure
5. HDD4 LED	Yellow: HDD activity Red: HDD failure
6. WAN/LAN1 LED	Blinking green: network activity
7. LAN2 LED	Blinking green: network activity
8. HDD Tray	Four HDD trays support 4x 3.5" or 4 x 2.5" HDDs
9. USB Port	USB 3.0 port for compatible USB devices, such as digital cameras, USB disks, and USB printers.



- **Rear Panel**

The W4000/W4000+'s rear panel features ports and connectors.



Back Panel	
Item	Description
1. Power Connector	To connect the power adaptor
2. WAN/LAN1 Port	WAN/LAN1 port for connecting to an Ethernet network through a switch or a router.
3. LAN2 Port	LAN2 port for connecting to a local Ethernet network through a switch or a router.
4. USB 2.0 Port	USB 2.0 port for compatible USB devices, such as digital cameras, USB disks, and USB printers.
5. eSATA Ports	eSATA port for high-speed storage expansion
6. LINE Out	For Audio out
7. VGA	For Video out
8. HDMI	For Video/Audio out

## 1.4 W5000/W5000+:

- **Front Panel**

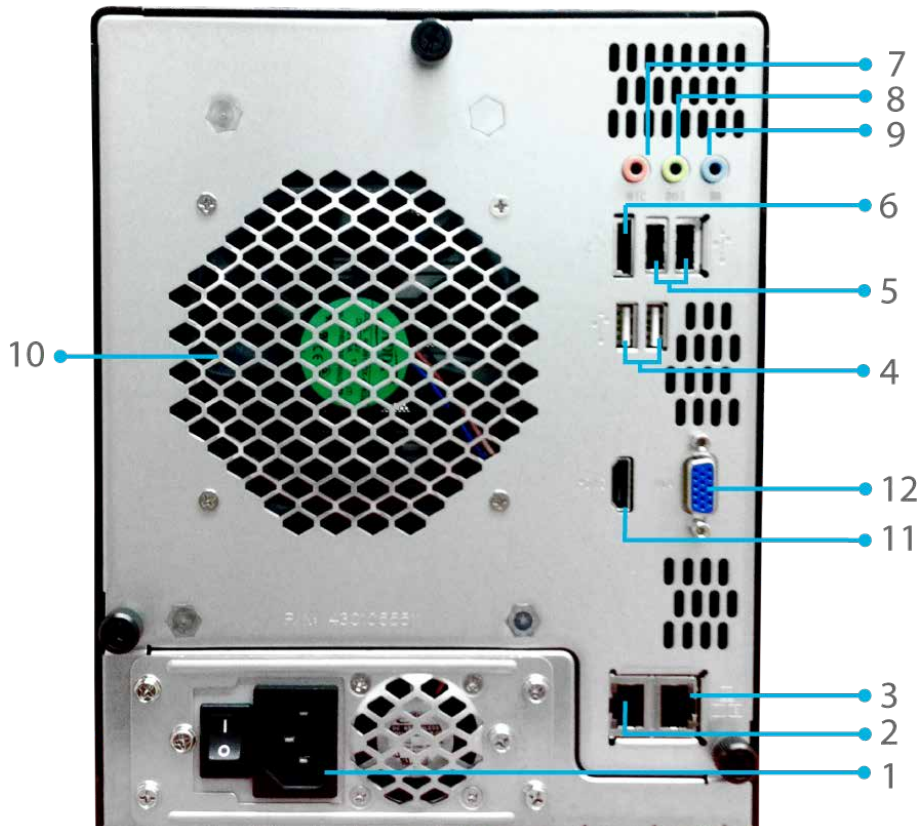
The Thecus W5000/W5000+'s front panel shows the device's indicators and hard disk install slots:



Front Panel	
Item	Description
1. WAN/LAN1 LED	Solid green: Network link Blinking green: Network activity
2. LAN2 LED	Solid green: Network link Blinking green: Network activity
3. System Warning LED	Solid RED: System error
4. Reboot Button	Reboot the System.
5. USB Port	USB 3.0 port for compatible USB devices, such as USB disks.
6. Power Button/ Power LED	Power on/off W5000/W5000+ and Power LED. Solid blue: System is power on.
7. LCD Display	Displays current system status.
8. HDD Trays	Five 3.5" SATA HDD trays. Locks are provided for added security.

- **Rear Panel**

The W5000/W5000+'s rear panel features ports and connectors.



Back Panel	
Item	Description
1. Power Connector	Connect the included power cords to these connectors
2. WAN/LAN1 Port	WAN/LAN1 port for connecting to an Ethernet network through a switch or a router.
3. LAN2 Port	LAN2 port for connecting to a local Ethernet network through a switch or a router.
4. USB 2.0 Port	USB 2.0 port for compatible USB devices, such as digital cameras, USB disks, and USB printers.
5. USB 2.0 Port	USB 2.0 port for compatible USB devices, such as digital cameras, USB disks, and USB printers.
6. eSATA Port	eSATA port for high-speed storage expansion
7. Line in	For Audio in
8. LINE Out	For Audio out
9. Mic input	Microphone input
10. System Fan	System fan that exhausts heat from the unit.
11. HDMI Port	For Video/Audio out
12. VGA Port	For Video out

## 1.5 W5810:

- **Front Panel**

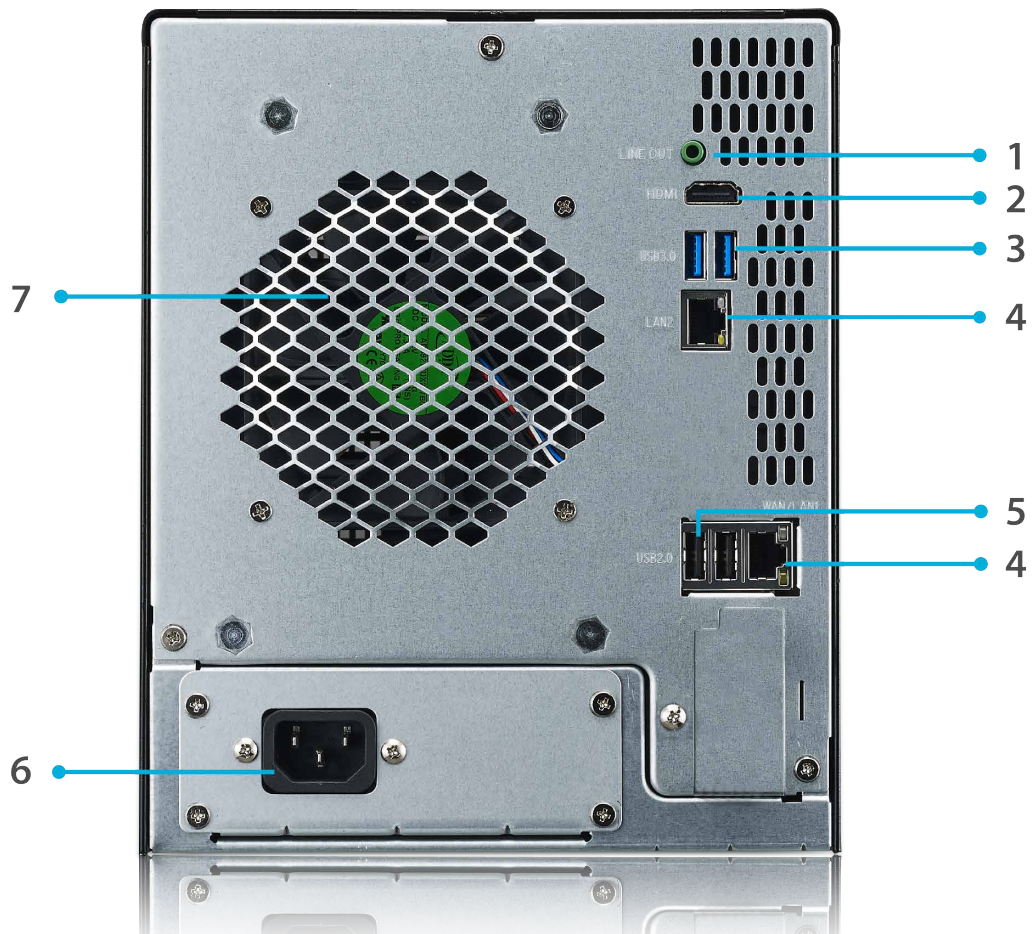
The Thecus W5810's front panel shows the device's indicators and hard disk install slots:



Front Panel	
Item	Description
1. Power LED	White: System is power on.
2.WAN/LAN1 LED	White: Network activity
3.LAN2 LED	White: Network activity
4. System LED	White: System is being upgraded or ;is starting up; data currently inaccessible RED: System error
5.USB Port	USB 3.0 port for compatible USB devices, such as USB disks.
6.Power Button	Power on/off W5810 and Power LED.
7.LCD Display	Displays current system status and warning messages.
8.HDD Trays	Five 3.5" SATA HDD trays. Locks are provided for added security.

- **Rear Panel**

The W5810's rear panel features ports and connectors.



Back Panel	
Item	Description
1. LINE Out	For Audio out
2. HDMI Port	For Video/Audio out
3. USB 3.0 Port	USB 3.0 port for compatible USB devices, such as digital cameras, USB disks, and USB printers.
4. WAN/LAN1/LAN2	WAN/LAN1 port for connecting to an Ethernet network through a switch or router
5. USB 2.0 Port	USB 2.0 port for compatible USB devices.
6. Power Connector	Connect the included power cords to these connectors
7. System Fan	System fan that exhausts heat from the unit.

# §Chapter 2: Hardware Installation

## 2.1 Overview

To help you get started, the following chapter will help you quickly get your Thecus WSSE NAS up and running. Please read it carefully to prevent damaging your unit during installation.

## 2.2 Before You Begin

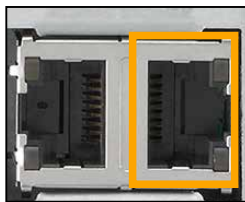
Before you begin, be sure to take the following precautions:

1. Read and understand the Safety Warnings outlined in the beginning of the manual.
2. If possible, wear an anti-static wrist strap during installation to prevent static discharge from damaging the sensitive electronic components on the Thecus WSSE NAS.
3. Be careful not to use magnetized screwdrivers around the Thecus WSSE NAS's electronic components.

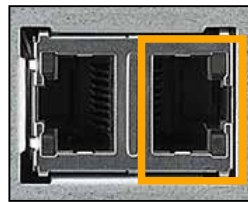
## 2.3 Cable Connections

To connect the Thecus WSSE NAS product to your network, follow the steps below:

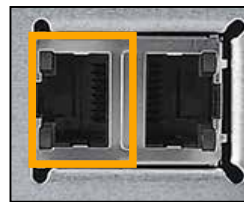
1. Connect an Ethernet cable from your network to the LAN port on the back panel of the Thecus IP storage.



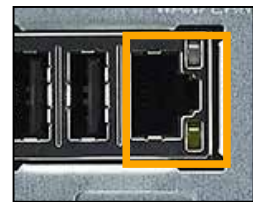
▲ W2000/  
W2000+ LAN port



▲ W4000/  
W4000+ LAN port



▲ W5000/  
W5000+ LAN port



▲ W5810 LAN  
port

2. Connect the provided power cord into the universal power socket on the back panel. Plug the other end of the cord into a surge protector socket.



▲ W2000/  
W2000+ Power  
socket



▲ W4000/  
W4000+ Power  
socket



▲ W5000/  
W5000+ power  
socket



▲ W5810 power  
socket

3. Connect a USB Keyboard and Mouse to the back USB 2.0 ports of your WSSE NAS system. Using an HDMI or VGA cable, also connect a monitor to the device.



**Please DO NOT connect your USB Keyboard to USB 3.0 ports.**

4. Press the power button on the Front Panel to boot up the Thecus WSSE NAS.



▲ W2000/  
W2000+ Power  
button



▲ W4000/  
W4000+ Power  
button



▲ W5000/  
W5000+ power  
button



▲ W5810 power  
button

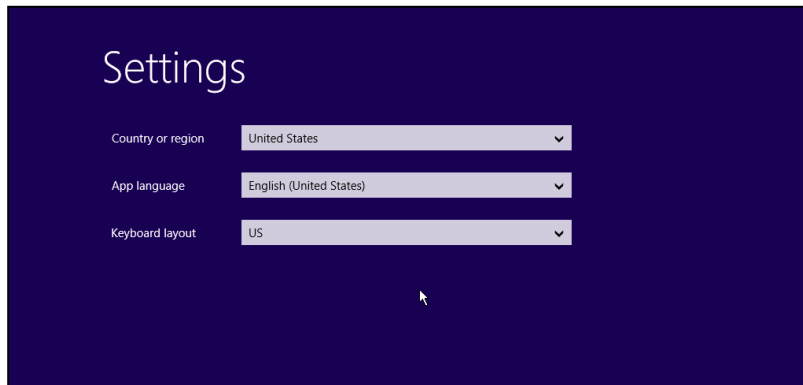
# § Chapter 3: Getting started

## 3.1 Hardware installation

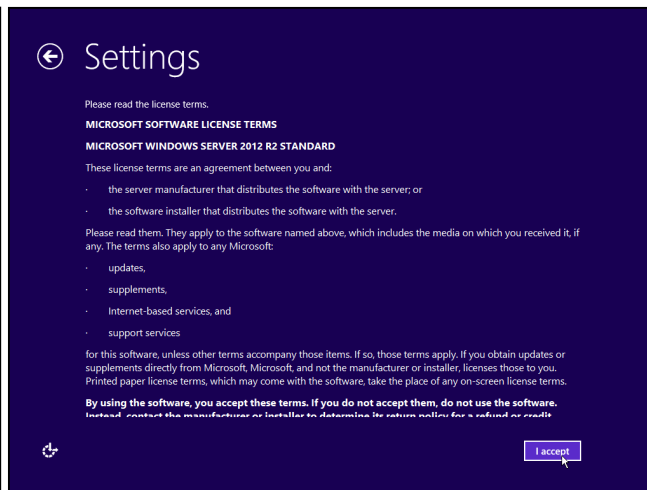
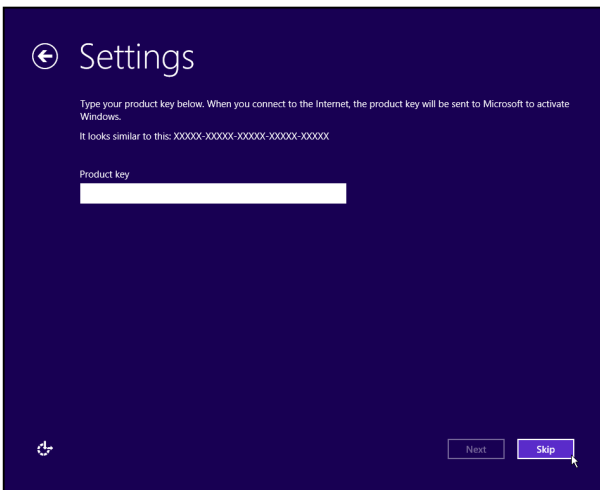
For instructions on how to connect the WSSE NAS to your network, please see Chapter 2.

## 3.2 First Power On

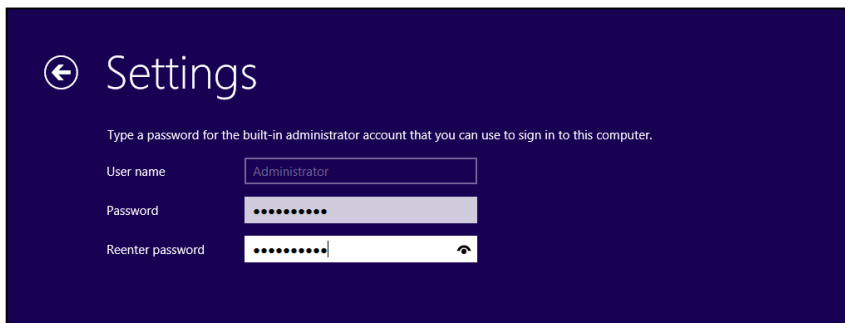
1. Power on the WSSE NAS.
2. Select a preferred language and time zone.



3. Enter your Product Key.
4. Read and accept the Software License Terms.

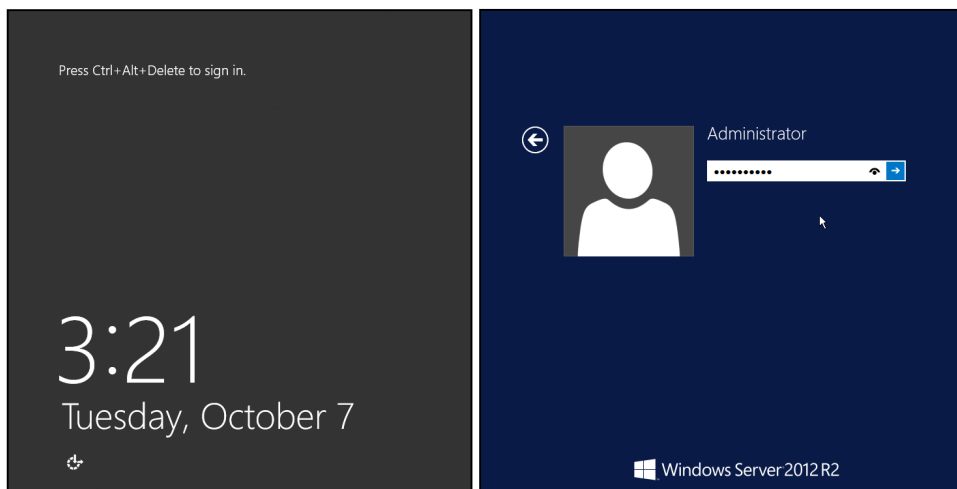


5. Set an administrative password. The password must contain at least 10 characters, including a mixture of uppercase and lowercase letters (a-z, A-Z) and base numbers (0-9).





## 6. Log into Windows Storage Server 2012 R2 Essentials.



### 3.3 Essentials Administrative Dashboard

The Dashboard is the command and control center for Windows Storage Server 2012 R2 Essentials. Designed with a streamlined look and feel and enhanced with improved functionality, the Dashboard is used to perform all the management and maintenance tasks you need to control how your server behaves on your network.

To use the Essentials Administrative Dashboard, you must create or join an Active Directory environment. The Configure Windows Storage Server Essentials wizard can help you to quickly set up an Active Directory environment and related server features.

For more information about Active Directory Domain Service, please see [TechNet-Active Directory Domain Services Overview](#).

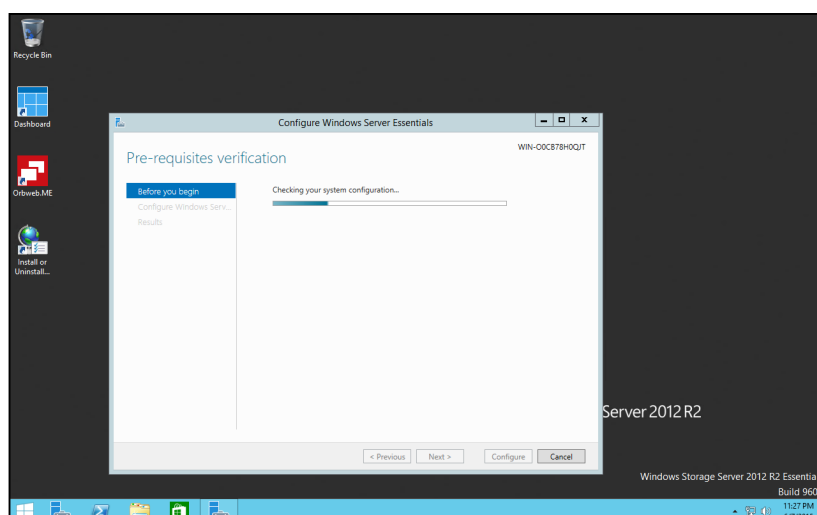
- **Configure Essentials Administrative Dashboard.**

If you want to set up a new Active Directory environment, please follow the wizard to configure Windows Storage Server Essentials.

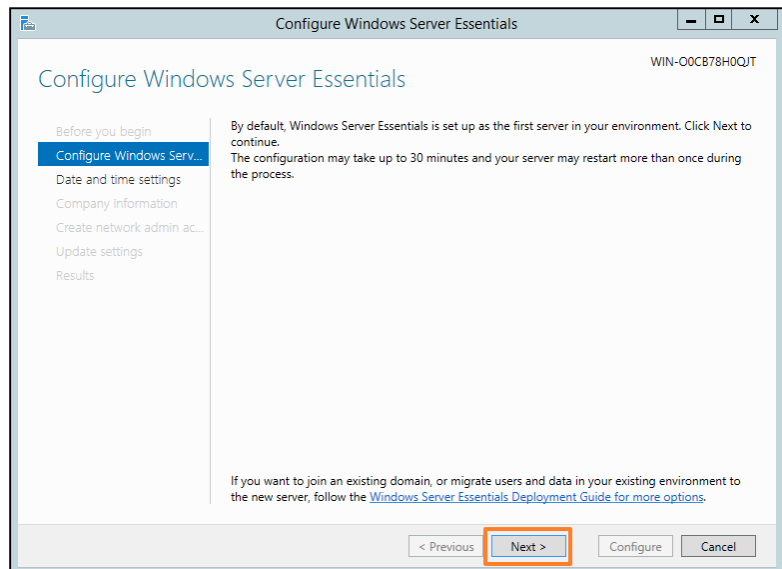
You can also join an existing Active Directory environment, for step by step instructions please see: "[To deploy Windows Storage Server Essentials in an existing Active Directory environment](#)"

- **To set up a new Active Directory environment.**

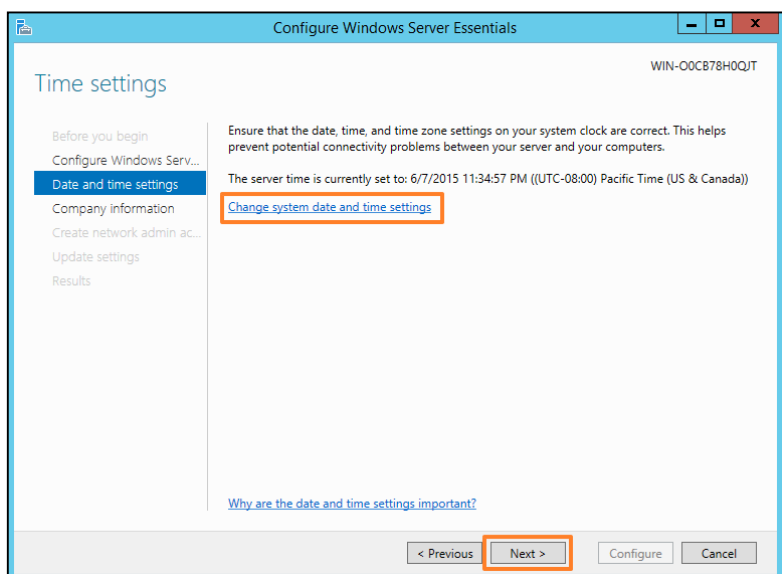
1. After the Windows Welcome page, the **Configure Windows Server Essentials Wizard** will be visible on your desktop.



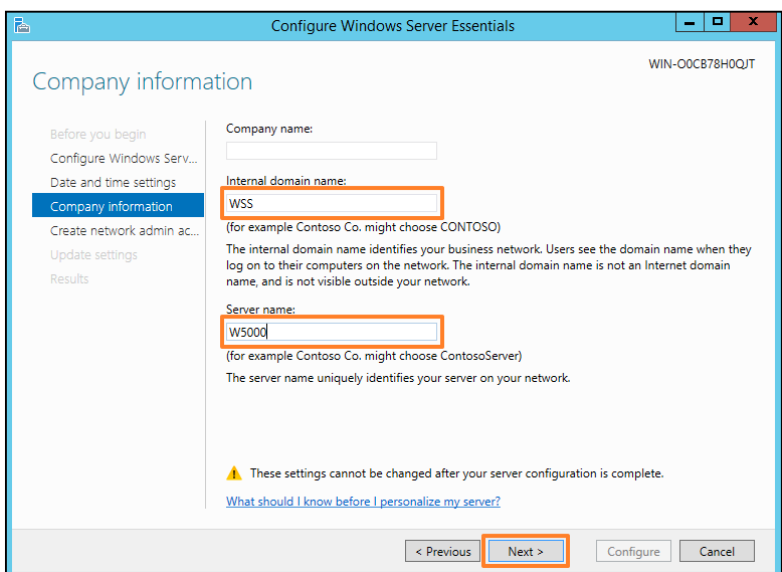
2. On the Configure Windows Server Essentials page, click **Next**.



3. In Time settings, make sure your date, time, and time zone are correct, and then click **Next**.



4. In Company Information, type your company name, and then click **Next**. Optionally, you can change the internal domain name and server name.



**The company information cannot be changed after your server configuration is complete.**

5. In Create Network Admin, type a new administrator account name and password, and then click **Next**.

Configure Windows Server Essentials

WIN-O0CB78HQJT

### Create a network administrator account

Before you begin

- Configure Windows Serv...
- Date and time settings
- Company information
- Create network admin ac...**
- Update settings
- Results

Create a network administrator account that you can use to perform server management tasks. To help protect your network, you should use the administrator account only when you need to perform administrative tasks that require administrator privileges.

Administrator account name:  
Admin

Password:  
\*\*\*\*\*

Confirm password:  
\*\*\*\*\*

< Previous   **Next >**   Configure   Cancel



Do not use the default Administrator account name.



The password must contain at least 10 characters, including a mixture of uppercase and lowercase letters (a-z, A-Z) and base numbers (0-9).

6. Select "Use Recommended Settings", and then click **Configure**.

Configure Windows Server Essentials

WIN-O0CB78HQJT

### Update settings

Before you begin

- Configure Windows Serv...
- Date and time settings
- Company information
- Create network admin ac...
- Update settings**
- Results

**Use recommended settings**  
Install important and recommended updates, check online for solutions to problems, and help Microsoft improve Windows Storage Server 2012 R2 Essentials.

Install updates only  
Install important and recommended updates.

Do not check for updates  
If you choose this option, your server might be vulnerable to security threats, and problems might be harder to fix.

[Which option should I choose?](#)

[Privacy Statement](#)

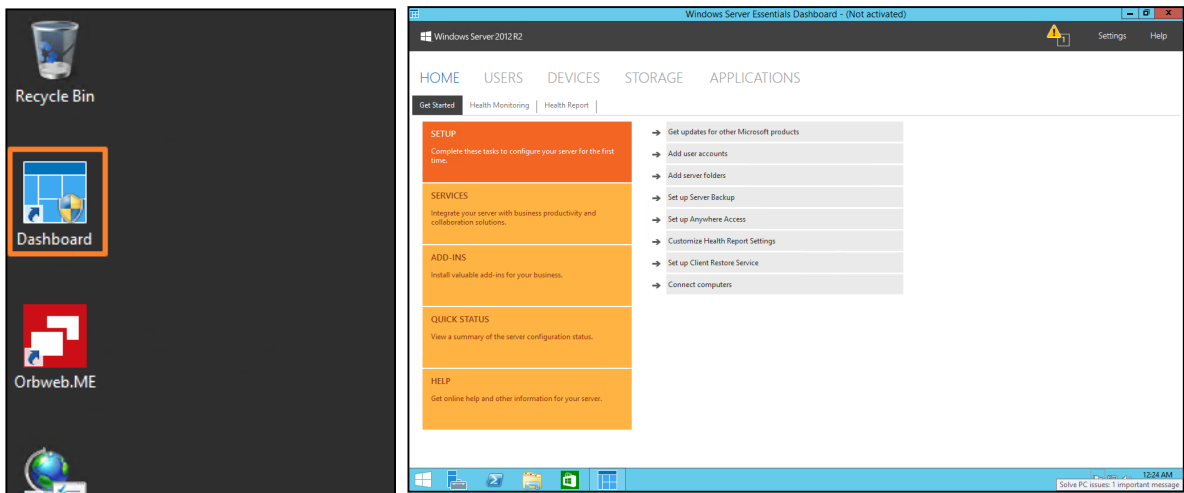
< Previous   Next >   **Configure**   Cancel

The server will restart multiple times during the configuration process, and your logons will be automatic until the configuration is finished. This process takes about 30 minutes.



**Please do not perform any other operations that can change the server configuration or turn it off.**

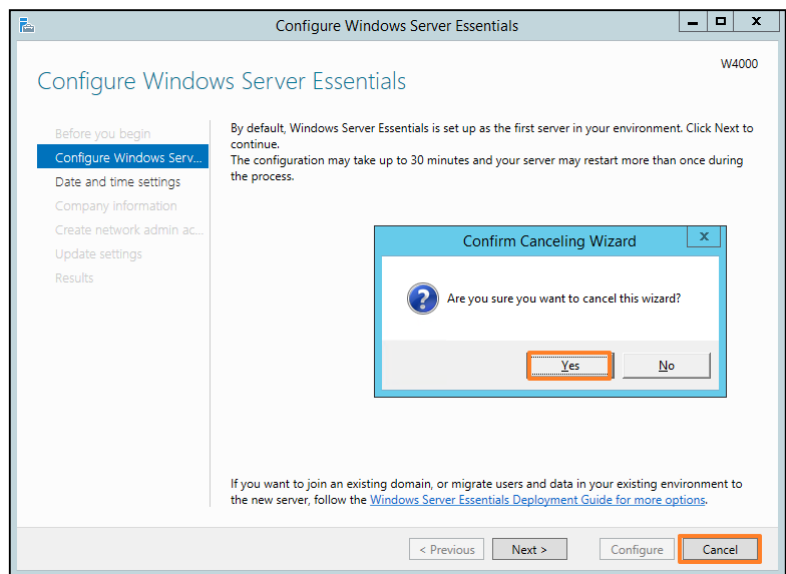
- On the desktop, click the **Dashboard** icon to start the server Dashboard. On the Home page, complete the Getting Started tasks listed on the Setup tab.



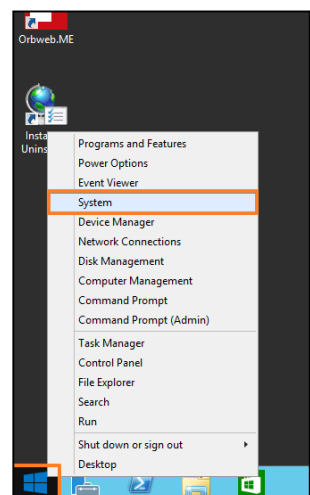
For more information about Dashboard, see [TechNet-Overview of the Dashboard](#)

- To deploy your WSSE NAS in an existing Active Directory environment**

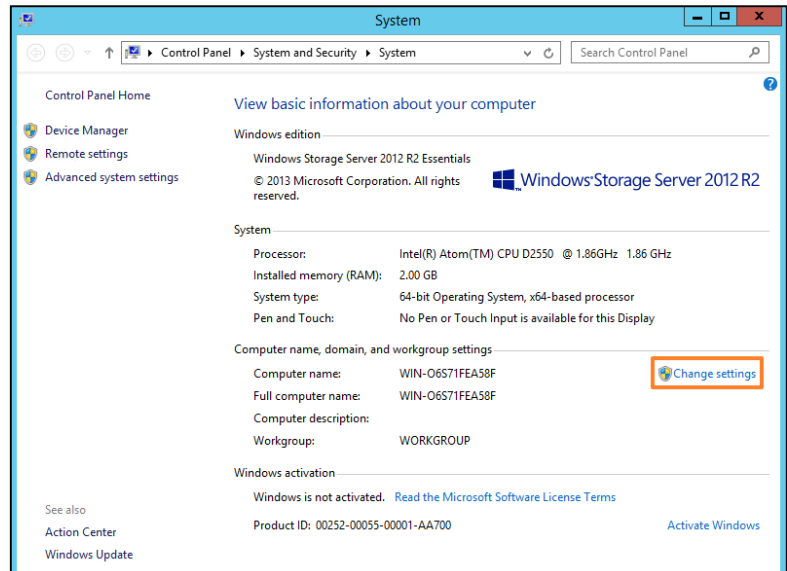
- After the Windows Welcome page, click "**Cancel**" to cancel the Configure Windows Server Essentials Wizard.



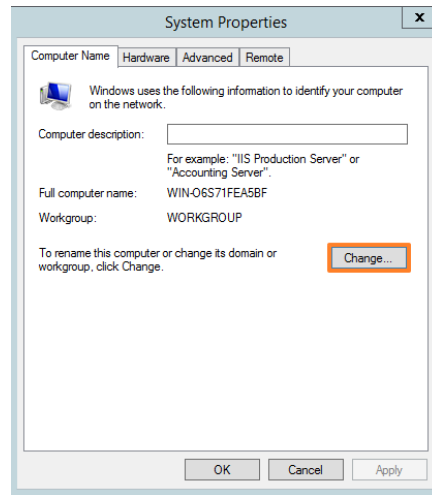
- If you want to change your computer name:
  - Open System by right-clicking **Start button**, and then clicking **System**.



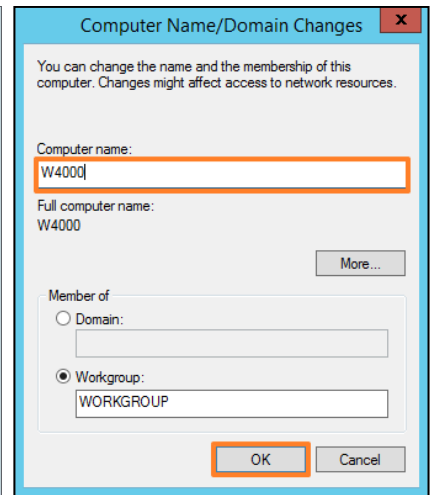
- b. Under Computer name, domain, and workgroup settings, click "Change settings".



- c. On the Computer Name tab, click "Change".

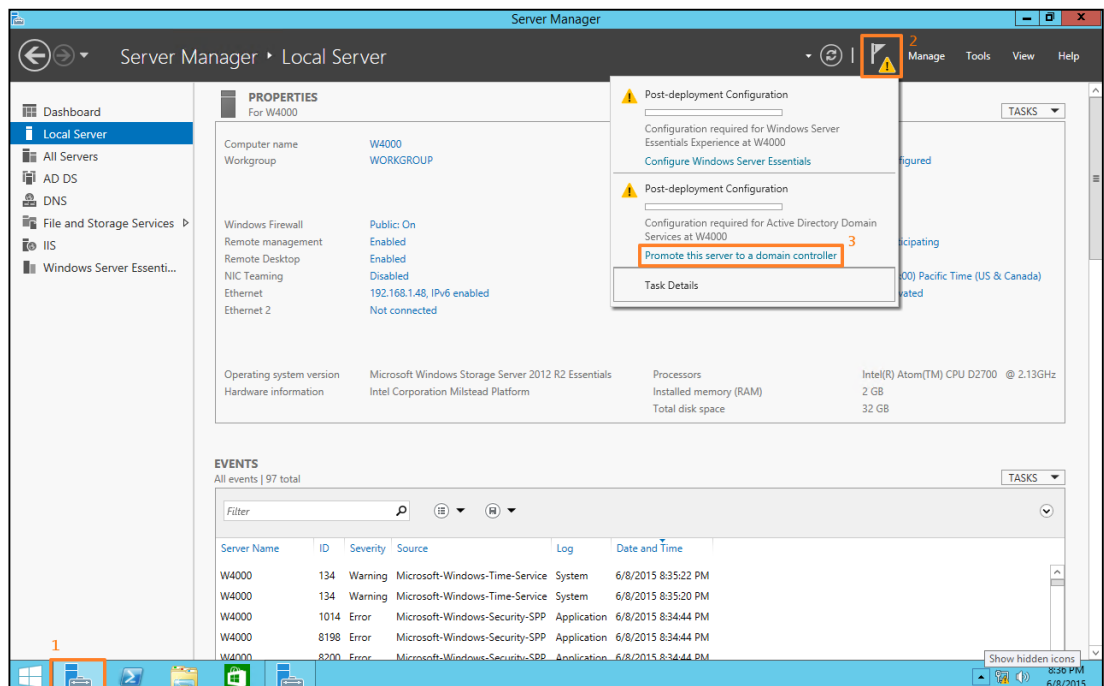


- d. Type a new computer name, and then click OK.



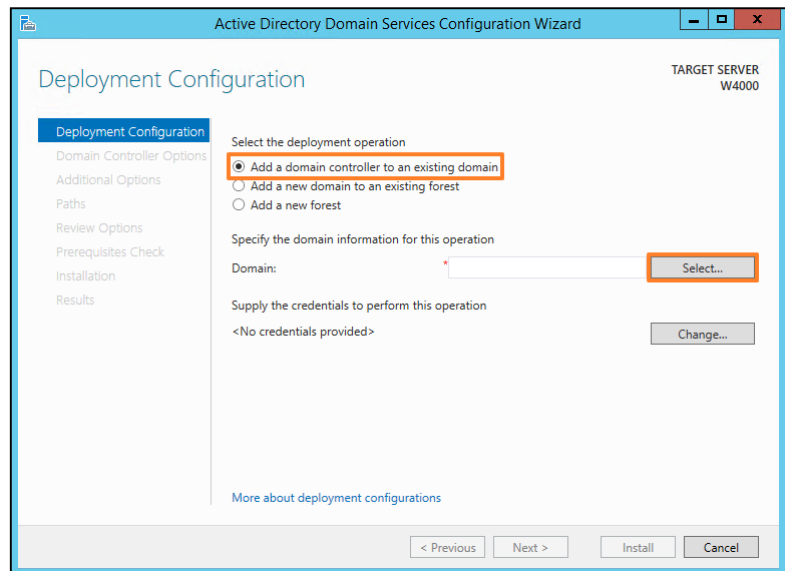
- e. Restart the WSSE NAS.

3. Open the Server Manager, click the flag, and then click "Promote this server to a domain controller."



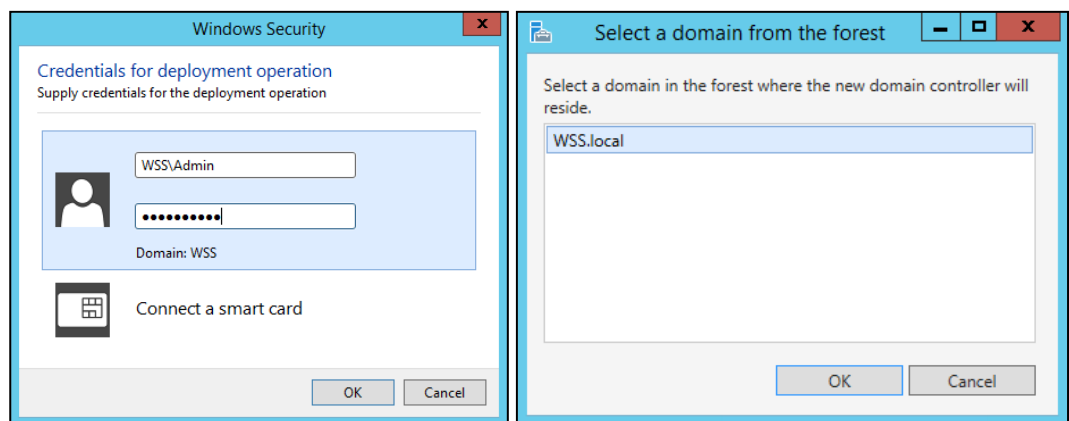
4. Select the option "Add a domain controller to an existing domain", and then click the "Select..." button.

For more information about AD Deployment Configuration, see [TechNet-AD DS Installation and Removal Wizard Page Descriptions](#).

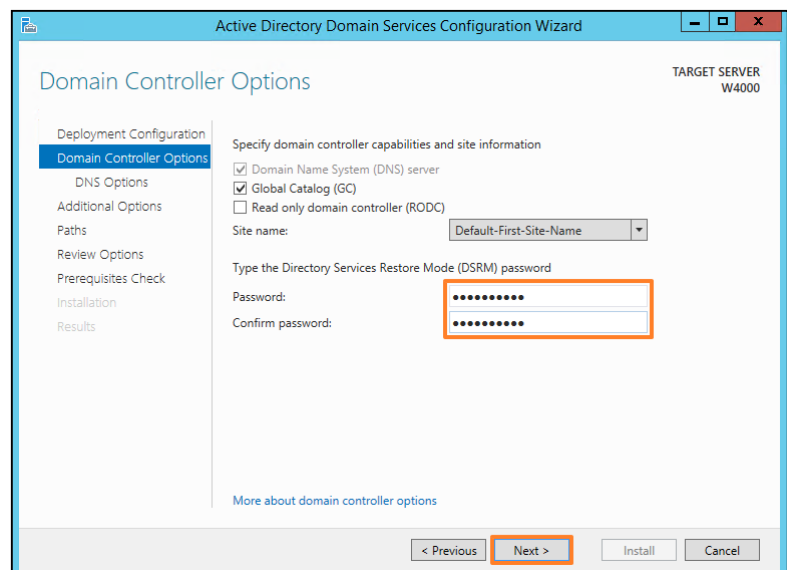


If you do not want this server to be a domain controller. Please see [TechNet-How to join your computer to a domain](#).

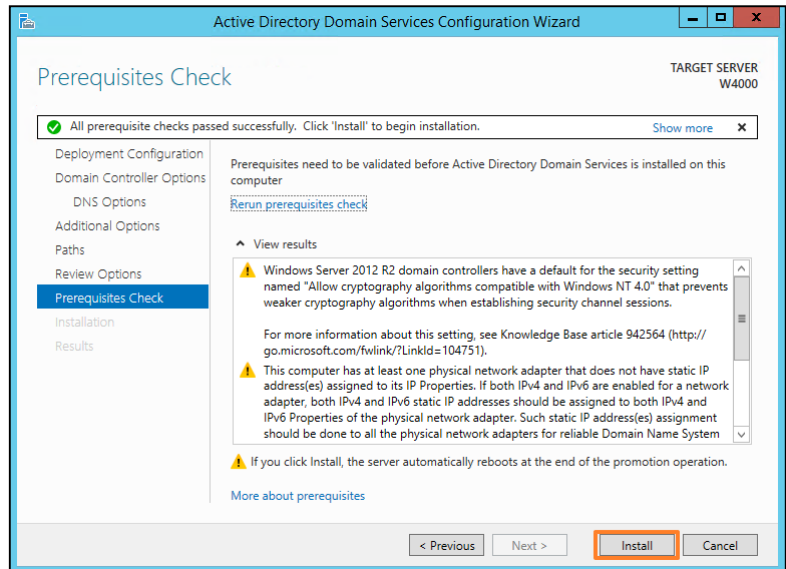
5. Enter the domain administrator credentials, and then select the domain name that exists in the local network.



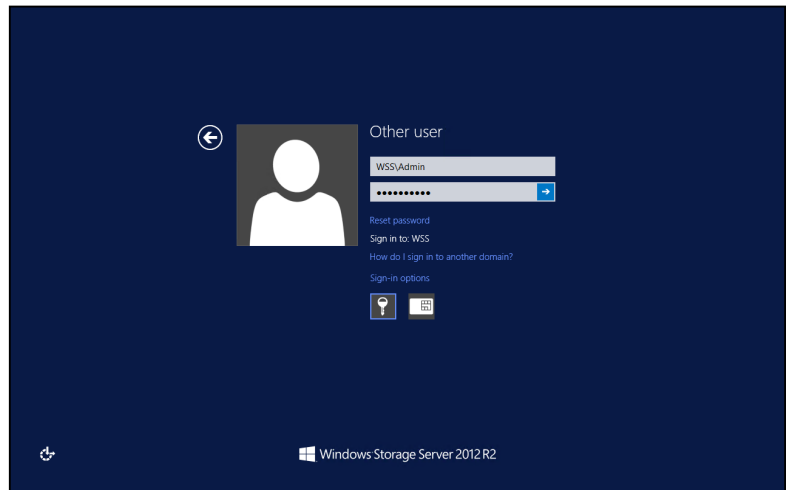
6. Type the DSRM password. Click "Next".



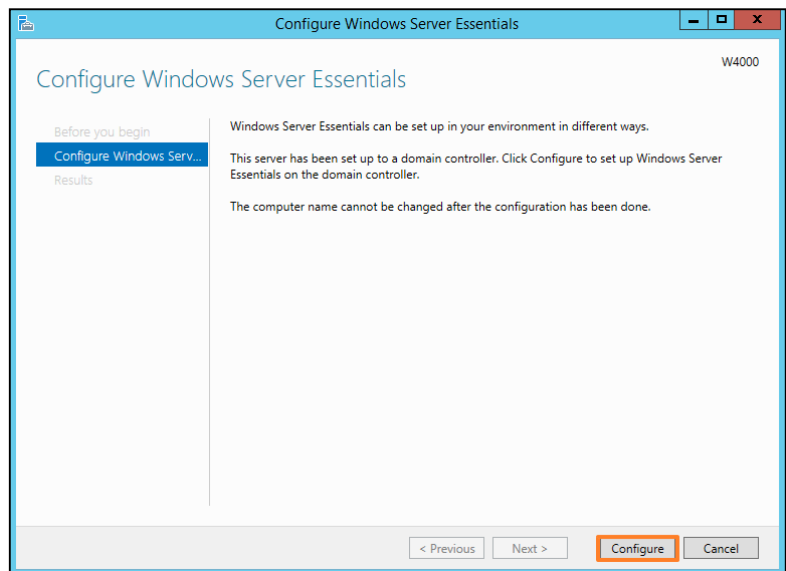
- Click the "Next " button until you reach the Prerequisite Check page.
- Click "Install" to proceed. The server will automatically reboot at the end of the operation.



- Log into WSSE by using domain administrator account. (e.g. WSS\Admin)

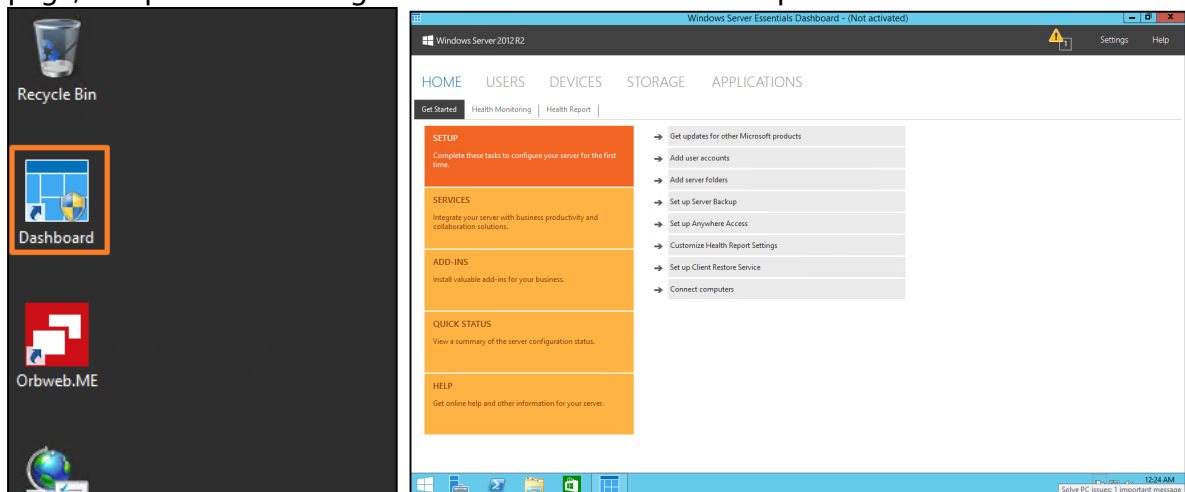


- After the Windows Welcome page, the **Configure Windows Server Essentials Wizard** is visible on your desktop. Click "Configure" to proceed.



**The computer name cannot be changed after your server configuration is complete.**

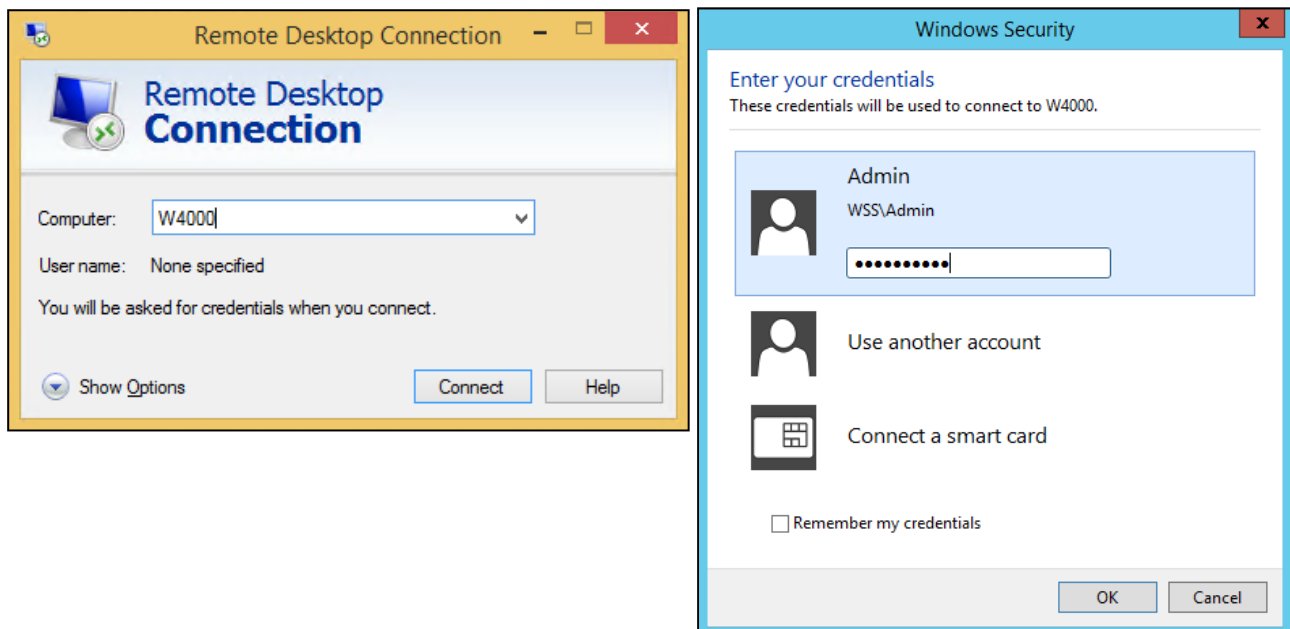
11. On the desktop, click the Dashboard icon to start the server Dashboard. On the Home page, complete the Getting Started tasks listed on the Setup tab.



For more information about Dashboard, see [TechNet-Overview of the Dashboard](#)

### 3.4 Connect to WSSE using Remote Desktop Connection

1. On your PC or laptop, Click the **Start** icon and then search "**Remote Desktop Connection**".
2. Type your WSSE computer name or IP, then Click **Connect**.
3. Enter your domain account and password, then Click **OK**.



For more information about Remote Desktop Connection, Please see [here](#)

### 3.5 Connect your computer to the WSSE by using the Connector software

Please see [TechNet-Get Connected in Windows Server Essentials](#)



## §Chapter 4: System Recovery



- The standard system is shipped with the OS pre-installed (WSS 2012 R2 Essentials). First select the system language, then enter the license key.
- Before you start to re-install the system disk via the recovery DVD or USB, please download the .ISO image file at <http://ftp.thecus.com/wss/> and save it to a bootable DVD-R or bootable USB.



**Please backup all your data first. The action will delete all of your data on your OS disk.**

- Step 1. Connect your recovery media.
- Step 2. Power on the system, set up BIOS boot priority. Confirm that the system can boot from DVD or associated boot device.
- Step 3. When the screen appears, press the “**Recovery**” button. Confirm by pressing “yes” which starts system recovery.
- Step 4. After the recovery process is finished, press the “**Quit**” button to restart.



- Step 5. Restarting will take some time. Establish the language of choice, input license key, and set up password. System installation is now complete.

## §Appendix: Frequently Asked Questions

---

- [How to configure NAS boot from DVD or USB driver.](#)
- [How to upgrade W2000 W4000 & W5000 to 4GB DRAM total](#)
- [W2000 SD card reader reinitializes](#)
- [WSS 2012 R2 Essentials recovery DVD ISO for W2000 W4000 W5000](#)
- [WSS FAQ Client Computer Backups](#)
- [WSS FAQ Drives detected but unable to see partition or data](#)
- [WSS FAQ How to access shared folders from WSS & map network drives without joining Active Directory domain \(AD\)](#)
- [WSS FAQ How to add & remove shared folders from WSS](#)
- [WSS FAQ How to create a user account in Active Directory\(AD\)](#)
- [WSS FAQ How to update W2000 W4000 W5000 BIOS](#)
- [WSS FAQ Remote Desktop Protocol disconnecting after Windows Update](#)
- [WSS FAQ System unable to repair Parity Virtual Disk](#)
- [WSS FAQ Why I cannot activate WSS 2012 R2 Essentials from W2000 W4000 W5000](#)
- [WSS FAQ Windows \(Storage\) Server 2012 R2 Products and Editions Comparison](#)
- [WSS W2000/W4000/W2000+/W4000+ Why 60G SSD but have 31.9GB volume usable?](#)
- [WSS W2000/W4000/W5000 ORBWEB support?](#)
- [WSS W2000/W4000/W5000/W2000+/W4000+/W5000+ how to recovery to factory default HDD content? \(ALL HDD DATA WILL BE ERASE!!\)](#)
- [WSS W2000/W4000/W5000/W8900/W12000/W16000 how to found the Windows license key?](#)

Still have questions? please go to [Thecus tech support website](#) or [Microsoft TechNet](#).