



ET1515L-7CXC* / ET1515L-8CXC*



ET1515L-7CXC* / ET1515L-8CXC*

Quick Installation Guide

1515L 15" LCD Desktop Touchmonitor, 1000 Series
(Optional Magnetic Stripe Reader Available)



www.tycoelectronics.com



Revision A
P/N E993328

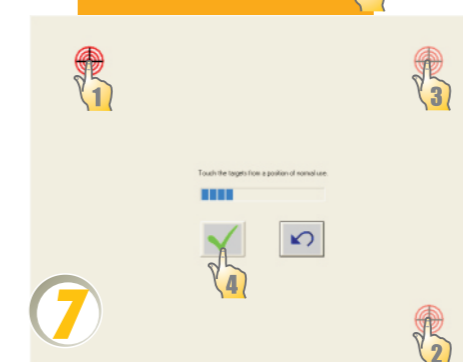
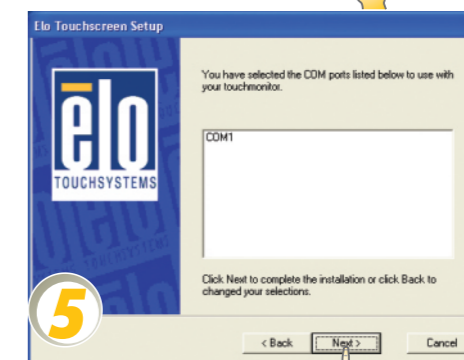
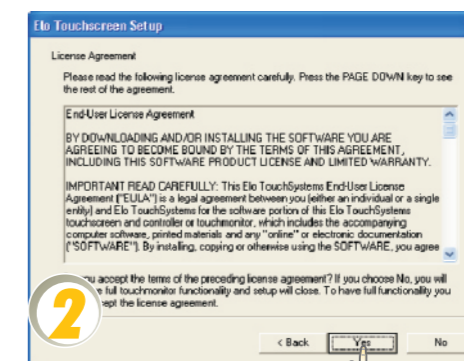
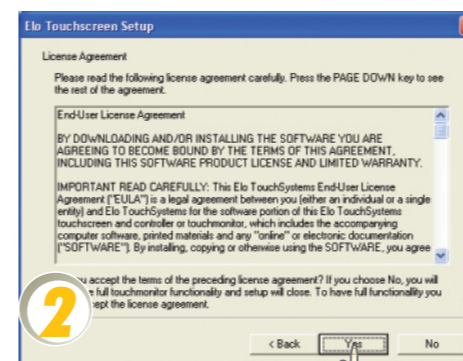
North America
Elo TouchSystem
301 Constitution Drive,
Menlo Park, CA 94025
www.elotouch.com

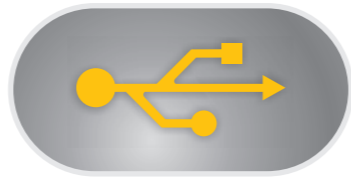
Technical Support
Tel 1-800-800-9166
1-800-557-1458
Fax 1-865-675-0871
elotech@elotouch.com
www.elotouch.com

Europe
Tel +32 (0)16 35 21 00
Fax +32 (0)16 35 21 01
elosales@elotouch.com

Asia-Pacific
Tel +81 (45) 478-2161
Fax +81 (45) 478-2180
www.tps.co.jp

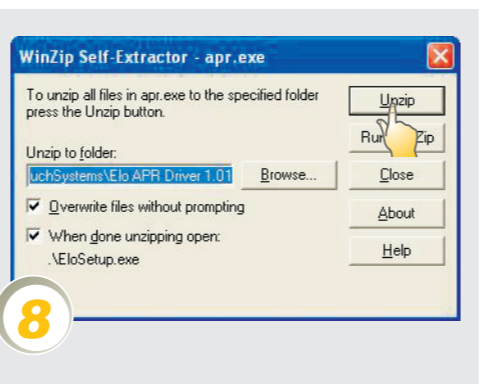
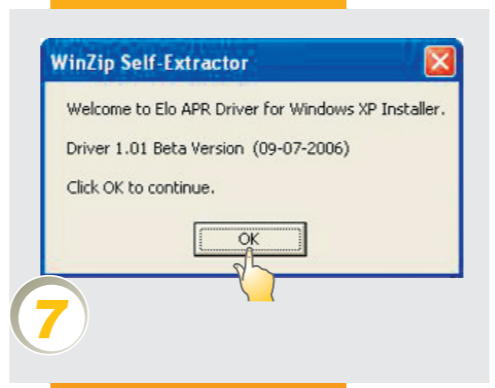
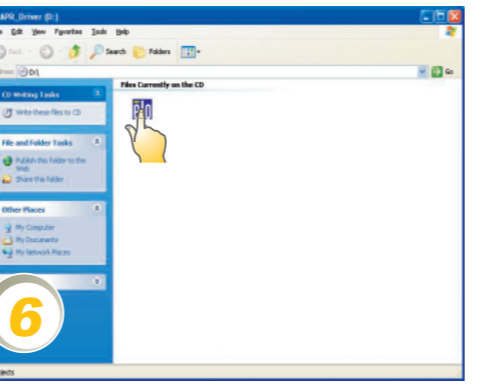
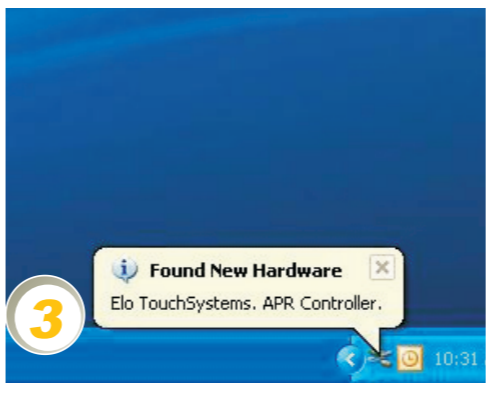
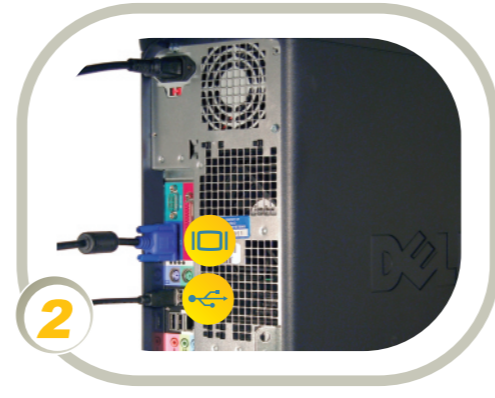
Latin America
Tel 1-305-428-5210
Fax 1-305-717-4909
www.elotouch.com.ar





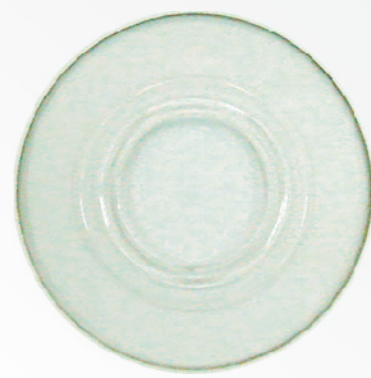
APR-(Acoustic Pulse Recognition) Software Install Use APR CD

ET1515L-AUXC*

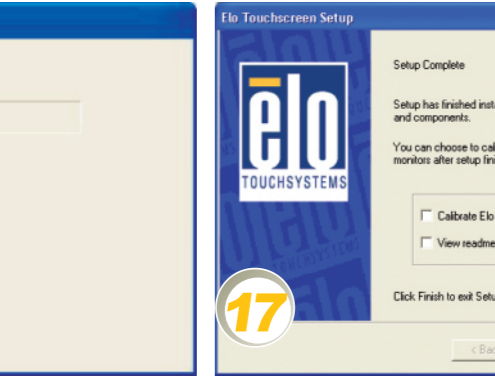
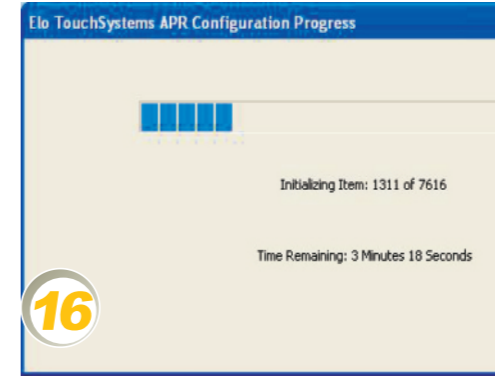
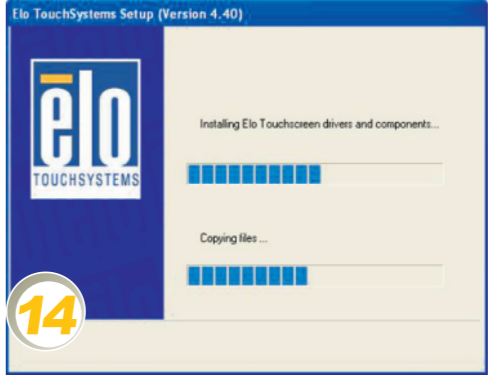
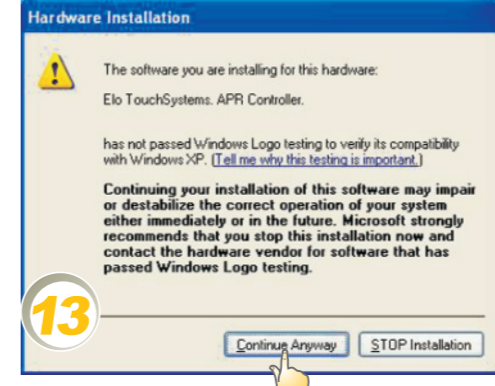
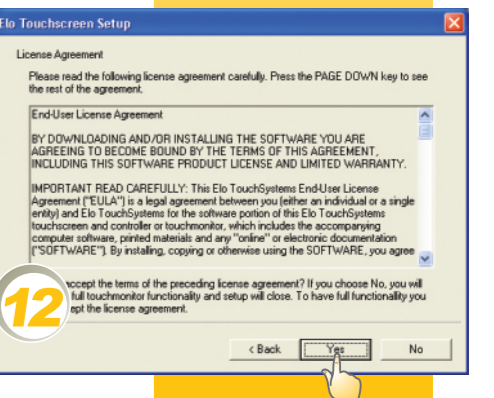
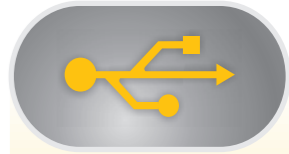


Elo TouchSystems TouchTools

Includes drivers and documentation for Elo Entuitive touchmonitors and touchscreens, and Scribex signature capture drivers.



Elo, Monitor Mouse, Entuitive, TouchTools, and Scribex are trademarks of Elo TouchSystems, Inc. Other product and company names mentioned here may be the trademarks of their respective owners.
© 2006 Elo TouchSystems, Inc. All rights reserved.



NO NEED TO CALIBRATE. USE FACTORY DEFAULTS!