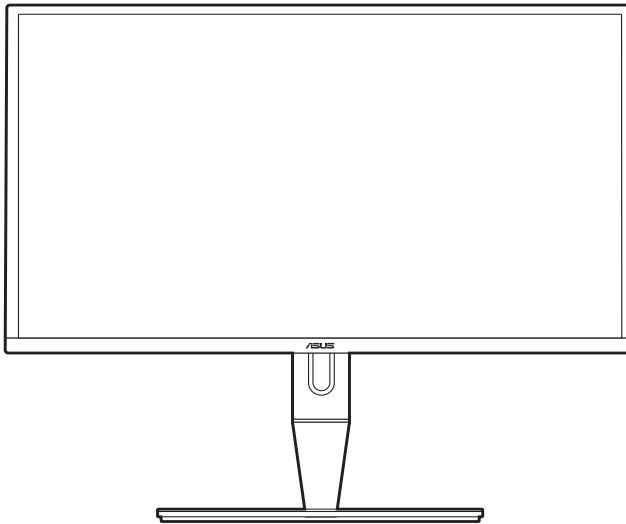


ASUS®

**PA27UCX Series
LCD Monitor**

User Guide



HDMI™
HIGH DEFINITION MULTIMEDIA INTERFACE

First Edition

March 2020

Copyright © 2020 ASUSTeK COMPUTER INC. All Rights Reserved.

No part of this manual, including the products and software described in it, may be reproduced, transmitted, transcribed, stored in a retrieval system, or translated into any language in any form or by any means, except documentation kept by the purchaser for backup purposes, without the express written permission of ASUSTeK COMPUTER INC. ("ASUS").

Product warranty or service will not be extended if: (1) the product is repaired, modified or altered, unless such repair, modification or alteration is authorized in writing by ASUS; or (2) the serial number of the product is defaced or missing.

ASUS PROVIDES THIS MANUAL "AS IS" WITHOUT WARRANTY OF ANY KIND, EITHER EXPRESS OR IMPLIED, INCLUDING BUT NOT LIMITED TO THE IMPLIED WARRANTIES OR CONDITIONS OF MERCHANTABILITY OR FITNESS FOR A PARTICULAR PURPOSE. IN NO EVENT SHALL ASUS, ITS DIRECTORS, OFFICERS, EMPLOYEES OR AGENTS BE LIABLE FOR ANY INDIRECT, SPECIAL, INCIDENTAL, OR CONSEQUENTIAL DAMAGES (INCLUDING DAMAGES FOR LOSS OF PROFITS, LOSS OF BUSINESS, LOSS OF USE OR DATA, INTERRUPTION OF BUSINESS AND THE LIKE), EVEN IF ASUS HAS BEEN ADVISED OF THE POSSIBILITY OF SUCH DAMAGES ARISING FROM ANY DEFECT OR ERROR IN THIS MANUAL OR PRODUCT.

SPECIFICATIONS AND INFORMATION CONTAINED IN THIS MANUAL ARE FURNISHED FOR INFORMATIONAL USE ONLY, AND ARE SUBJECT TO CHANGE AT ANY TIME WITHOUT NOTICE, AND SHOULD NOT BE CONSTRUED AS A COMMITMENT BY ASUS. ASUS ASSUMES NO RESPONSIBILITY OR LIABILITY FOR ANY ERRORS OR INACCURACIES THAT MAY APPEAR IN THIS MANUAL, INCLUDING THE PRODUCTS AND SOFTWARE DESCRIBED IN IT.

Products and corporate names appearing in this manual may or may not be registered trademarks or copyrights of their respective companies, and are used only for identification or explanation and to the owners' benefit, without intent to infringe.

Contents

Contents	iii
Notices	iv
Safety information	v
Care & Cleaning	vi
Takeback Services	vii
Chapter 1: Product introduction	
1.1 Welcome!	1-1
1.2 Package contents	1-1
1.3 Monitor introduction	1-2
1.3.1 Front view	1-2
1.3.2 Back view	1-3
1.3.3 QuickFit Function	1-4
1.3.4 Other Function(s)	1-6
Chapter 2: Setup	
2.1 Attaching the arm/base	2-1
2.2 Detaching the arm/base (for VESA wall mount)	2-1
2.3 Adjusting the monitor	2-2
2.4 Connecting the cables	2-4
2.5 Turning on the monitor	2-5
Chapter 3: General instructions	
3.1 OSD (On-Screen Display) menu	3-1
3.1.1 How to reconfigure	3-1
3.1.2 OSD function introduction	3-2
3.2 Specifications summary	3-12
3.3 Outline dimensions	3-14
3.4 Troubleshooting (FAQ)	3-15
3.5 Supported operating modes	3-16

Notices

Federal Communications Commission Statement

This device complies with Part 15 of the FCC Rules. Operation is subject to the following two conditions:

- This device may not cause harmful interference, and
- This device must accept any interference received including interference that may cause undesired operation.

This equipment has been tested and found to comply with the limits for a Class B digital device, pursuant to Part 15 of the FCC Rules. These limits are designed to provide reasonable protection against harmful interference in a residential installation. This equipment generates, uses and can radiate radio frequency energy and, if not installed and used in accordance with the instructions, may cause harmful interference to radio communications. However, there is no guarantee that interference will not occur in a particular installation. If this equipment does cause harmful interference to radio or television reception, which can be determined by turning the equipment off and on, the user is encouraged to try to correct the interference by one or more of the following measures:

- Reorient or relocate the receiving antenna.
- Increase the separation between the equipment and receiver.
- Connect the equipment into an outlet on a circuit different from that to which the receiver is connected.
- Consult the dealer or an experienced radio/TV technician for help.



The use of shielded cables for connection of the monitor to the graphics card is required to assure compliance with FCC regulations. Changes or modifications to this unit not expressly approved by the party responsible for compliance could void the user's authority to operate this equipment.

Canadian Department of Communications Statement

This digital apparatus does not exceed the Class B limits for radio noise emissions from digital apparatus set out in the Radio Interference Regulations of the Canadian Department of Communications.

This class B digital apparatus complies with Canadian ICES-003.

This Class B digital apparatus meets all requirements of the Canadian Interference - Causing Equipment Regulations.

Cet appareil numérique de la classe B respecte toutes les exigences du Règlement sur le matériel brouilleur du Canada.



Safety information

- Before setting up the monitor, carefully read all the documentation that came with the package.
- To prevent fire or shock hazard, never expose the monitor to rain or moisture.
- Never try to open the monitor cabinet. The dangerous high voltages inside the monitor may result in serious physical injury.
- If the power supply is broken, do not try to fix it by yourself. Contact a qualified service technician or your retailer.
- Before using the product, make sure all cables are correctly connected and the power cables are not damaged. If you detect any damage, contact your dealer immediately.
- Slots and openings on the back or top of the cabinet are provided for ventilation. Do not block these slots. Never place this product near or over a radiator or heat source unless proper ventilation is provided.
- The monitor should be operated only from the type of power source indicated on the label. If you are not sure of the type of power supply to your home, consult your dealer or local power company.
- Use the appropriate power plug which complies with your local power standard.
- Do not overload power strips and extension cords. Overloading can result in fire or electric shock.
- Avoid dust, humidity, and temperature extremes. Do not place the monitor in any area where it may become wet. Place the monitor on a stable surface.
- Unplug the unit during a lightning storm or if it will not be used for a long period of time. This will protect the monitor from damage due to power surges.
- Never push objects or spill liquid of any kind into the slots on the monitor cabinet.
- To ensure satisfactory operation, use the monitor only with UL listed computers which have appropriate configured receptacles marked between 100-240V AC.
- If you encounter technical problems with the monitor, contact a qualified service technician or your retailer.
- Adjustment of the volume control as well as the equalizer to other settings than the center position may increase the ear-/headphones output voltage and therefore the sound pressure level.



This symbol of the crossed out wheeled bin indicates that the product (electrical, electronic equipment, and mercury-containing button cell battery) should not be placed in municipal waste. Please check local regulations for disposal of electronic products.

AEEE yönetmeliğine uygundur

Care & Cleaning

- Before you lift or reposition your monitor, it is better to disconnect the cables and power cord. Follow the correct lifting techniques when positioning the monitor. When lifting or carrying the monitor, grasp the edges of the monitor. Do not lift the display by the stand or the cord.
- Cleaning. Turn your monitor off and unplug the power cord. Clean the monitor surface with a lint-free, non-abrasive cloth. Stubborn stains may be removed with a cloth dampened with mild cleaner.
- Avoid using a cleaner containing alcohol or acetone. Use a cleaner intended for use with the monitor. Never spray cleaner directly on the screen, as it may drip inside the monitor and cause an electric shock.

The following symptoms are normal with the monitor:

- You may find slightly uneven brightness on the screen depending on the desktop pattern you use.
- When the same image is displayed for hours, an afterimage of the previous screen may remain after switching the image. The screen will recover slowly or you can turn off the Power Switch for hours.
- When the screen becomes black or flashes, or cannot work anymore, contact your dealer or service center to fix it. Do not repair the screen by yourself!

Conventions used in this guide



WARNING: Information to prevent injury to yourself when trying to complete a task.



CAUTION: Information to prevent damage to the components when trying to complete a task.



IMPORTANT: Information that you **MUST** follow to complete a task.



NOTE: Tips and additional information to aid in completing a task.

Where to find more information

Refer to the following sources for additional information and for product and software updates.

1. **ASUS websites**

The ASUS websites worldwide provide updated information on ASUS hardware and software products. Refer to <http://www.asus.com>

2. **Optional documentation**

Your product package may include optional documentation that may have been added by your dealer. These documents are not part of the standard package.

Takeback Services

ASUS recycling and takeback programs come from our commitment to the highest standards for protecting our environment. We believe in providing solutions for our customers to be able to responsibly recycle our products, batteries and other components as well as the packaging materials.

Please go to <http://csr.asus.com/english/Takeback.htm> for detail recycling information in different region.

1.1 Welcome!

Thank you for purchasing the ASUS® LCD monitor!

The latest widescreen LCD monitor from ASUS provides a broader, brighter and crystal-clear display, plus a host of features that enhance your viewing experience.

With these features, you can enjoy the convenience and delightful visual experience that the monitor brings to you!

1.2 Package contents

Check your package for the following items:

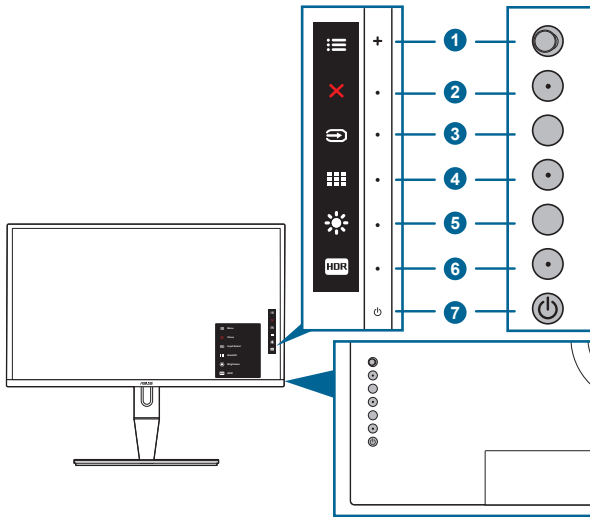
- ✓ LCD monitor
- ✓ Monitor base
- ✓ Quick start guide
- ✓ Warranty card
- ✓ Power cord
- ✓ HDMI cable
- ✓ USB Type-C cable
- ✓ DisplayPort cable
- ✓ USB Type-C to Type-A cable
- ✓ Input/Output port cover
- ✓ Color Calibration Testing Report
- ✓ Color Calibrator (for PA27UCX-K only)
- ✓ Hood






If any of the above item is damaged or missing, contact your retailer immediately.



1.3 Monitor introduction


1.3.1 Front view






1.  Menu (5-way) button:
 - Enter the OSD menu.
 - Enact the selected OSD menu items.
 - Increase/Decrease values or move your selection up/down/left/right.
2.  Close button:
 - Exit the OSD menu.
 - Toggle the Key Lock function between on and off with a long press for 5 seconds.
3.  Input select button:
 - Select an available input source.



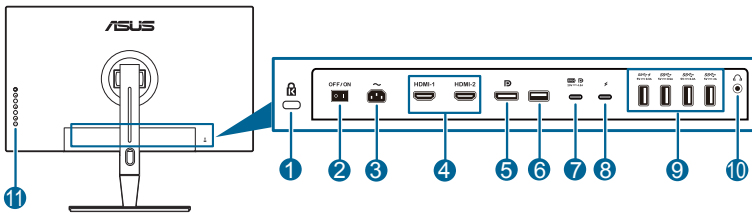
Press  button (Input Select button) to display HDMI-1, HDMI-2, DisplayPort, USB 3.1 Type-C  signals after you connect HDMI/DisplayPort/USB Type-C cable with the monitor.

4.  QuickFit button:
 - This is a hotkey to activate the QuickFit function designed for alignment.
 - The QuickFit function contains 7 types of alignment patterns. (Please refer to 1.3.3 QuickFit Function).

5.  Shortcut 1
 - Default: Brightness hotkey
 - To change the hotkey function, go to the Shortcut > Shortcut 1 menu.
6.  Shortcut 2
 - Default: HDR hotkey
 - To change the hotkey function, go to the Shortcut > Shortcut 2 menu.
7.  Power button/power indicator
 - Turns the monitor on/off.
 - The color definition of the power indicator is as the below table.

Status	Description
White	On
Amber	Standby mode
Off	Off

1.3.2 Back view



1. **Kensington lock slot.**
2. **Power switch.** Press the switch to turn on/off power.
3. **AC-IN port.** This port connects the power cord.
4. **HDMI ports.** These ports are for connection with an HDMI compatible device.
5. **DisplayPort in.** This port is for connection with a DisplayPort compatible device.



The default setting of DisplayPort Stream in the OSD menu is DisplayPort 1.2. You can change it to DisplayPort 1.1 when your device output signal is DisplayPort 1.1.

6. **USB 2.0 Type-A.** This port is for service only.
7. **USB 3.1 Type-C.** This port is for connection with a DisplayPort/USB Type-C compatible device. This port is also for connection with a USB upstream cable, which supports USB power and data delivery.



This monitor is Super-Speed USB 3.1 compatible (5Gbps). The port offers 5V/3A power delivery. If Type-C2 port is connected with an adapter, this port can supply power up to 90W (with output voltage of 5V, 9V, 15V and 20V depending on the adapter's ability).

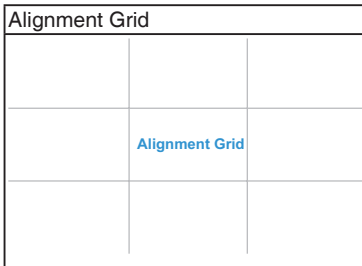
- 8. **USB Type-C2.** This port is only for connection with a power adapter to enable power delivery function for **USB 3.1 Type-C.**
- 9. **USB 3.1 Type-A (SuperSpeed USB 5 Gbps):** These ports are for connection with USB devices, such as USB keyboard/mouse, USB flash drive, etc.
- 10. **Earphone jack.**
- 11. **Control buttons.**

1.3.3 QuickFit Function

The QuickFit function contains 7 types of patterns: (1) Alignment Grid (2) A4 (3) B5 (4) Letter (5)Photo (6) Customization (7) Ruler. To activate the patterns, press the QuickFit button. Use the ☰ Menu (5-way) button to select a desired pattern. You can move the button up/down/left/right to change the pattern's position if needed. Note that all the patterns can be moved left/right according to your need, but may have limited range for moving up/down.

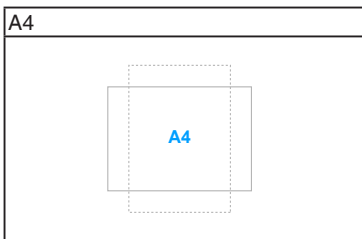
1. Alignment Grid

The grid patterns facilitate designers and users to organize content and layout on a page and achieve a consistent look and feel.



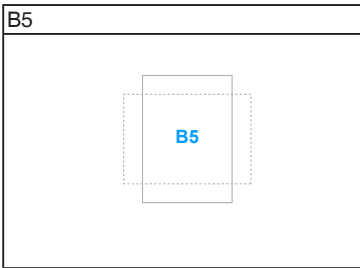
2. A4

QuickFit provides standard A4 paper size for users to view their documents in real size on the screen.



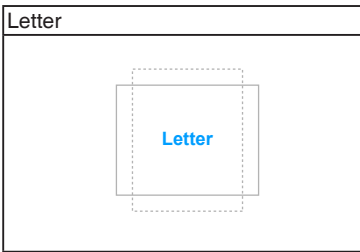
3. B5

QuickFit provides standard B5 paper size for users to view their documents in real size on the screen.



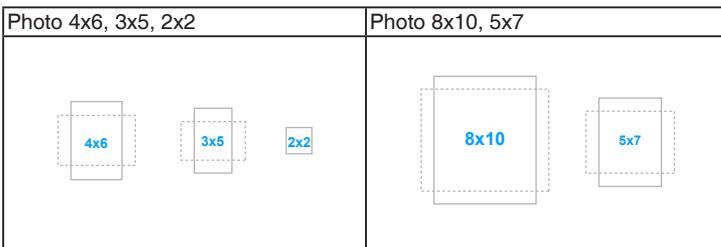
4. Letter

QuickFit provides standard letter paper size for users to view their documents in real size on the screen.



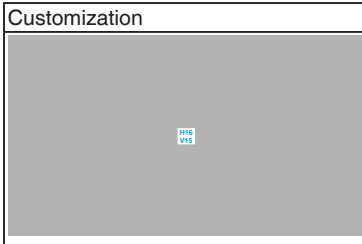
5. Photo size

The various real photo sizes displayed in the QuickFit function provides photographers and other users to accurately view and edit their photos in real size on the screen.



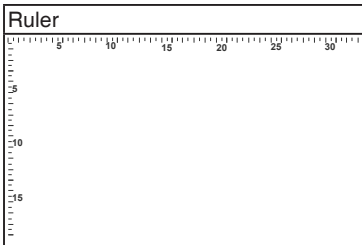
6. Customization

You can decide the frame size by moving the **☰** Menu (5-way) button up/down/left/right. You can press the **☰** Menu (5-way) button for longer than 3 seconds to switch the measurements between millimeter and inch.



7. Ruler

This pattern presents physical ruler on top and left side. You can press the **☰** Menu (5-way) button for longer than 3 seconds to switch the measurements between metric and imperial.



1.3.4 Other Function(s)

HDR

The monitor supports HDR format. When detecting HDR content, an "HDR ON" message will pop up and display in the Information page.

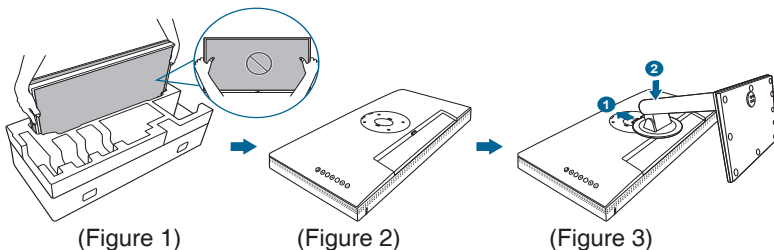


HDR content is not supported when PIP/PBP mode is on.

2.1 Attaching the arm/base

To assemble the monitor base:

1. Carefully take the monitor out of the box. Hold the monitor firmly and do not press on the panel screen when lifting to avoid any accidental damage.
2. Have the front of the monitor face down on a table (Figure 2).
3. Attach the stand into the back of the monitor, making sure the tab on the arm fits into the groove on the back of the monitor. (Figure 3).



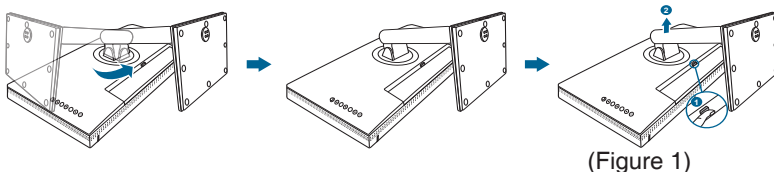
We recommend that you cover the table surface with soft cloth to prevent damage to the monitor.

2.2 Detaching the arm/base (for VESA wall mount)

The detachable arm/base of this monitor is specially designed for VESA wall mount.

To detach the arm/base:

1. Have the front of the monitor face down on a table.
2. Press the release button, and then detach the arm/base from the monitor (Figure 1).



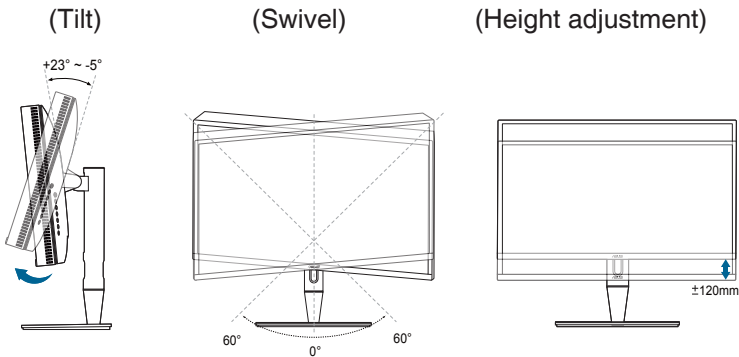
We recommend that you cover the table surface with soft cloth to prevent damage to the monitor.



- The VESA wall mount kit (100 x 100 mm) is purchased separately.
- Use only the UL Listed Wall Mount Bracket with minimum weight/load 22.7kg (Screw size: M4 x 10 mm).

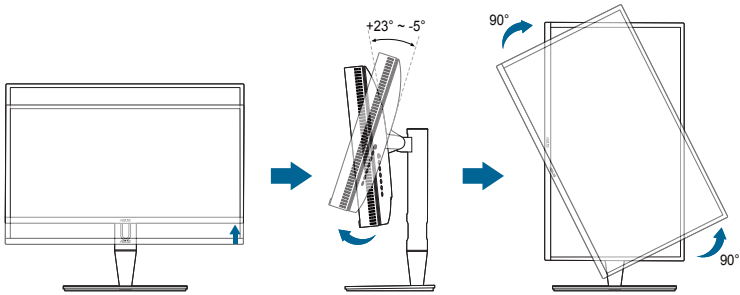
2.3 Adjusting the monitor

- For optimal viewing, we recommend that you look at the full face of the monitor, then adjust the monitor to the angle that is most comfortable for you.
- Hold the stand to prevent the monitor from falling when you change its angle.
- You can adjust the monitor's angle from $+23^\circ$ to -5° , and it allows 60° swivel adjustment from either left or right. You can also adjust the monitor's height within ± 120 mm.



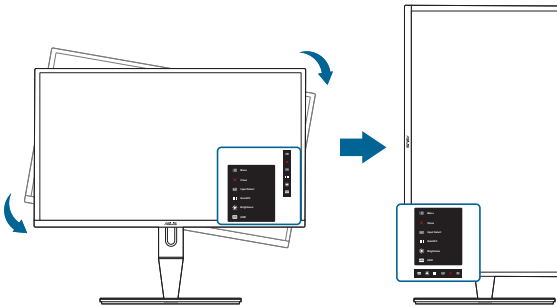
Pivoting the monitor

1. Lift the monitor to the highest position.
2. Tilt the monitor to its maximum angle.
3. Pivot the monitor to the angle you need.



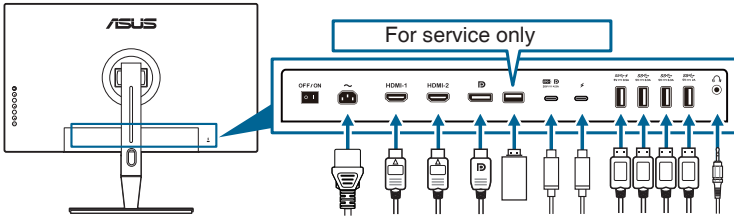
It is normal that the monitor slightly shakes while you adjust the viewing angle.

4. The OSD menu item will automatically rotate when the monitor rotates.



2.4 Connecting the cables

1. Connect the cables as the following instructions:



- **To connect the power cord:** Connect one end of the power cord securely to the monitor's AC input port, the other end to a power outlet.
- **To connect the HDMI/DisplayPort/USB Type-C* cable:**
 - a. Plug one end of the HDMI/DisplayPort/USB Type-C* cable to the monitor's HDMI/DisplayPort/USB Type-C jack.
 - b. Connect the other end of the HDMI/DisplayPort/USB Type-C* cable to your device's HDMI/DisplayPort/USB Type-C jack.



It is suggested to use USB certified Type-C cable. If the signal source supports DP Alt mode, all video, audio and data signal can be transmitted.

- **To use the earphone:** connect the end with plug type to the monitor's earphone jack when an HDMI/DisplayPort/USB Type-C signal is fed.
- **To use the USB upstream/downstream function:**
 - » Upstream: Use an USB Type-C cable and plug on end of the Type-C connector to the monitor's USB 3.1 Type-C port (USB 3.1, DP, 100W PPS 4.5A) as upstream and the other end to your computer's USB Type-C jack. Or use an USB Type-C to Type-A cable and plug the Type-C connector to the the monitor's USB 3.1 Type-C port (USB 3.1, DP, 100W PPS 4.5A) as upstream and the Type-A connector to your computer's USB Type-A jack. Make sure your computer is installed with the latest Windows 7/Windows 8.1/Windows 10 operating system. That will enable the USB ports on the monitor to work.
 - » Downstream: Use an USB cable to connect your device with the monitor's USB Type A jack.
 - » USB Type-A jack can be used for Color Calibrator.



When these cables are connected, you can choose the desired signal from the Input Select item in the OSD menu.

3.1 OSD (On-Screen Display) menu

3.1.1 How to reconfigure



1. Press the **≡** Menu (5-way) button to activate the OSD menu.
2. Move the **≡** Menu (5-way) button up/down/left/right to navigate through the functions. Highlight the desired function and press the **≡** Menu (5-way) button to activate it. If the function selected has a sub-menu, move the **≡** Menu (5-way) button up/down to navigate through the sub-menu functions. Highlight the desired sub-menu function and press the **≡** Menu (5-way) button or move the **≡** Menu (5-way) button to activate it.
3. Move the **≡** Menu (5-way) button up/down to change the settings of the selected function.
4. To exit and save the OSD menu, press the **X** button or move the **≡** Menu (5-way) left repeatedly until the OSD menu disappears. To adjust other functions, repeat steps 1-3.

3.1.2 OSD function introduction

1. ProArt Preset

This function contains 13 sub-functions you can select for your preference. Each mode has the Reset selection, allowing you to maintain your setting or return to the preset mode.



- **Standard Mode:** Best choice for document editing.
- **sRGB Mode:** Compatible with sRGB color space, sRGB mode is the best choice for document editing.
- **Adobe RGB Mode:** Compatible with Adobe RGB color space.
- **Rec. 2020 Mode:** Compatible with Rec. 2020 color space.
- **DCI-P3 Mode:** Compatible with DCI-P3 color space.
- **DICOM Mode:** Compliant with DICOM standard, best choice for medical image checking.
- **Rec. 709 Mode:** Compatible with Rec.709 color space.
- **HDR_PQ DCI:** Presents ST2084 with DCI-P3 color gamut and D65 white point.
 - * PQ Optimized: Delivers the optimized HDR performance of this display with as much accuracy as with ST2084 in terms of display luminance capability.
 - * PQ Clip: Preserves PQ curve till displaying maximum luminance with accuracy. ST2084 code value with higher than display maximum will be mapped to the maximum luminance. We also provide a maximum of 300 nits for your use.
 - * PQ Basic: Presents HDR performance of general HDR supported displays.
- **HDR_PQ Rec2020:** Presents ST2084 with Rec.2020 color gamut and D65 white point.

- * PQ Optimized: Delivers the optimized HDR performance of this display with as much accuracy as with ST2084 in terms of display luminance capability.
 - * PQ Clip: Preserves PQ curve till displaying maximum luminance with accuracy. ST2084 code value with higher than display maximum will be mapped to the maximum luminance. We also provide a maximum of 300 nits for your use.
 - * PQ Basic: Presents HDR performance of general HDR supported displays.
- **HDR_HLG:**
 - * HLG BT2100: Compliant with BT2100.
 - **HDR_DolbyVision:**
 - * Bright: Compliant with DolbyVision Bright mode settings.
 - * Dark: Compliant with DolbyVision Dark mode settings.
 - **User Mode 1/User Mode 2:** Allows you to make color adjustments in the Advanced Setting. You can also save one or two ProArt Calibration profiles as User Mode 1/User Mode 2 after executing ProArt Calibration and then have quick access here.



Please apply the following settings while performing ProArt color calibration:

- Set output dynamic to full range.
- Set output color format to RGB.
- Set output color depth to 8 bit.

Below tables show the default configurations for each ProArt Preset mode:

Function	Standard	sRGB	Adobe RGB	Rec. 709	DCI-P3	Rec. 2020
Color Temp.	6500K	Fixed 6500K	Fixed 6500K	6500K	6500K	Fixed 6500K
Brightness	50	Fixed 100 nits	50	100 nits	50	100 nits
Contrast	80	Fixed 80	80	80	80	80
Sharpness	Enable (0)	Enable (0)	Enable (0)	Enable (0)	Enable (0)	Enable (0)
Saturation	Middle (50)	Disable	Middle (50)	Middle (50)	Middle (50)	Middle (50)
Hue	Middle (50)	Disable	Middle (50)	Middle (50)	Middle (50)	Middle (50)
Advanced Setting	Enable (Default)	Disable	Enable (Default)	Enable (Default)	Enable (Default)	Enable (Default)
Black Level	Enable (Default)	Disable	Enable (Default)	Enable (Default)	Enable (Default)	Enable (Default)
Input Range	Enable (Auto)	Enable (Auto)	Enable (Auto)	Enable (Auto)	Enable (Auto)	Enable (Auto)
Gamma	Enable (2.2)	Fixed 2.2	Fixed 2.2	Enable (2.4)	Fixed 2.6	Enable (2.4)
Uniformity Compensation	Enable (Off)	Enable (Off)	Enable (Off)	Enable (Off)	Enable (Off)	Enable (Off)
VividPixel	Enable (0)	Enable (0)	Enable (0)	Enable (0)	Enable (0)	Enable (0)

Function	DICOM	HDR_PO DCI	HDR_PO Rec2020	HDR_HLG	HDR_ DolbyVision	User Mode 1/ User Mode 2
Color Temp.	Fixed 6500K	Fixed 6500K	Fixed 6500K	Fixed 6500K	Fixed 6500K	6500K
Brightness	50	Fixed 50	Fixed 50	Fixed 50	Fixed 50	50
Contrast	80	Fixed 80	Fixed 80	Fixed 80	Fixed 80	80
Sharpness	Enable (0)	Enable (0)	Enable (0)	Enable (0)	Enable (0)	Enable (0)
Saturation	Middle (50)	Fixed 50	Fixed 50	Fixed 50	Fixed 50	Middle (50)
Hue	Middle (50)	Fixed 50	Fixed 50	Fixed 50	Fixed 50	Middle (50)
Advanced Setting	Enable (Default)	Disable	Disable	Disable	Disable	Disable
Black Level	Enable (Default)	Enable (Default)	Enable (Default)	Enable (Default)	Enable (Default)	Enable (Default)
Input Range	Enable (Auto)	Enable (Auto)	Enable (Auto)	Enable (Auto)	Enable (Auto)	Enable (Auto)
Gamma	Enable (2.2)	Disable	Disable	Disable	Disable	Fixed 2.2
Uniformity Compensation	Enable (Off)	Fixed Off	Fixed Off	Fixed Off	Fixed Off	Fixed Off
VividPixel	Enable (0)	Fixed 0	Fixed 0	Fixed 0	Fixed 0	Enable (0)

2. Blue Light Filter

In this function, you can adjust the blue light filter level.



To activate this function, you need to do the following: turn off Ambient Effect and disable HDR on your device.



- **Level 0:** No change.

- **Level 1~4:** The higher the level, the less blue light is scattered. When Blue Light Filter is activated, the default settings of Standard Mode will be automatically imported. Between Level 1 to Level 3, the Brightness function is user-configurable. Level 4 is optimized setting. It is compliance with TUV Low Blue Light Certification. The Brightness function is not user-configurable.



Please refer to the following to alleviate eye strains:

- Users should take some time away from the display if working for long hours. It is advised to take short breaks (at least 5 mins) after around 1 hour of continuous working at the computer. Taking short and frequent breaks is more effective than a single longer break.
- To minimize eye strain and dryness in your eyes, users should rest the eye periodically by focusing on objects that are far away.
- Eye exercises can help to reduce eye strain. Repeat these exercises often. If eye strain continues please consult a physician. Eye exercises: (1) Repeating look up and down (2) Slowly roll your eyes (3) Move your eyes diagonal.
- High energy blue light may lead to eye strain and AMD (Age-Related Macular Degeneration). Blue light filter to reduce 70% (max.) harmful blue light to avoiding CVS (Computer Vision Syndrome).

3. ProArt Palette

Set a desired color setting from this menu.



To activate this function, you need to do the following: turn off Ambient Effect and disable HDR on your device.



- **Brightness:** The adjusting range is from 0 to 100.
- **Contrast:** The adjusting range is from 0 to 100.
- **Saturation:** The adjusting range is from 0 to 100.
- **Hue:** Shifts the image color between green and purple.
- **Color Temp.:** Contains 5 modes including 9300K, 6500K, 5500K, 5000K and P3-Theater.

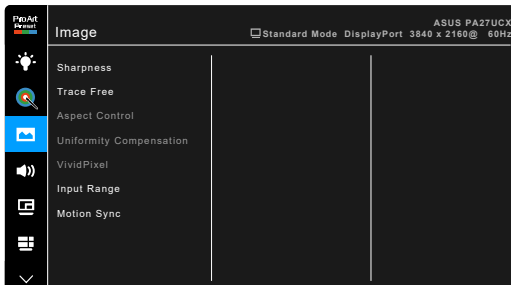


P3-Theater is only available when DCI-P3 mode is selected.

- **Gamma:** Allows you to set the color mode to 2.6, 2.4, 2.2, 2.0 or 1.8.
- **Black Level:** The darkest level of display.
 - * Signal: To adjust the initialized 1st signal level of darkest gray level.
 - * Backlight: To adjust the darkness of backlight.
- **Color:**
 - * Six-axis Hue adjustment.
 - * Six-axis Saturation adjustment.
 - * Adjusts the gain levels for R, G, B.
 - * Adjusts the black level offset values for R, G, B.
- **Color Reset:**
 - * Current mode color reset:
Resets the color settings of current color mode to the factory default value.
 - * All modes color reset:
Resets the color settings of all color modes to the factory default value.

4. Image

Set the image related setting from this menu.



- **Sharpness:** The adjusting range is from 0 to 100.
- **Trace Free:** Adjusts the response time of the monitor.



To activate this function, you need to do the following: turn off PIP/PBP and disable HDR on your device.

- **Aspect Control:** Adjusts the aspect ratio to full, 4:3, 1:1 or OverScan.



- To activate this function, you need to do the following: turn off PBP.
- 4:3 is only available when input source is in 4:3 format. OverScan is only available for the HDMI input source.

- **Uniformity Compensation:** Adjusts different areas of the screen to reduce any screen uniformity errors, providing consistent brightness and color across the entire screen.



To activate this function, you need to do the following: turn off Dynamic Dimming and disable HDR on your device.

- **VividPixel:** Enhances the outline of the displayed picture and generates high-quality images on screen.



To activate this function, you need to do the following: enable Sharpness and disable HDR on your device.

- **Input Range:** To map signal range with whole black to white presented range of display.
- **Motion Sync:** Simulates display as high refresh rate performance to generate different backlight frequencies.



To activate this function, you need to do the following: turn off Adaptive-Sync and Ambient Effect.

5. Sound

You can adjust Volume, Mute and Source from this menu.



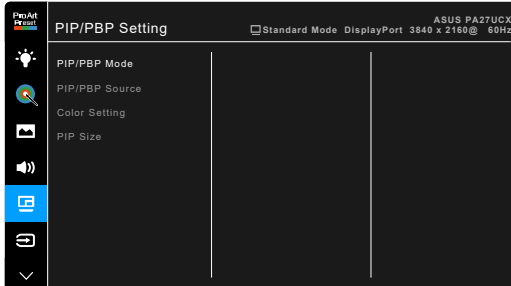
- **Volume:** The adjusting range is from 0 to 100.
- **Mute:** Toggle the monitor sound between on and off.
- **Source:** Decide the monitor sound comes from which source.

6. PIP/PBP Setting

The PIP/PBP Setting allows you to open up another sub-window connected from another video source besides the main-window from your original video source. By activating this function, the monitor displays up to 2 pictures from different video sources.



To activate this function, you need to do the following: turn off Dynamic Dimming, turn off Adaptive-Sync and disable HDR on your device.



- **PIP/PBP Mode:** Selects PIP, PBP, PBP x 3 or PBP x 4 function, or turn it off.
- **PIP/PBP Source:** Selects the video input source from among HDMI-1, HDMI-2, DisplayPort, and USB Type-C. The table below shows the input source combinations.

		Main-window			
		HDMI-1	HDMI-2	DisplayPort	USB Type-C
Sub-window	HDMI-1	Yes	Yes	Yes	Yes
	HDMI-2	Yes	Yes	Yes	Yes
	DisplayPort	Yes	Yes	Yes	Yes
	USB Type-C	Yes	Yes	Yes	Yes

- **Color Setting:** Selects an individual ProArt Preset Mode for the selected PIP/PBP source. (Up to 2 ProArt Preset modes can be chosen.)
- **PIP Size:** Adjusts the PIP size to Small, Middle, or Large. (Only available for the PIP mode)

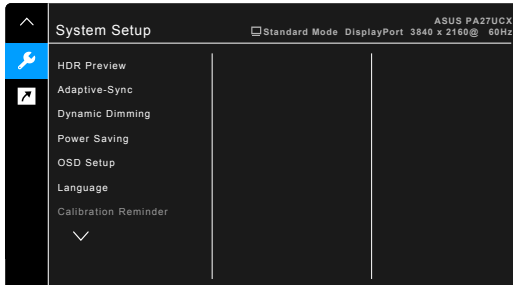
7. Input Select

In this function, you can select your desired input source.



8. System Setup

Allows you to adjust the system.



- **HDR Preview:** Allows you to preview non-HDR content performance with HDR10 and HLG mapping. While HDR Preview function is on, HDR_PQ DCI, HDR_PQ Rec2020, and HDR_HLG can be chosen.
- **Adaptive-Sync (DisplayPort/HDMI only):** Allows an Adaptive-Sync supported* graphics source to dynamically adjust display refresh rate based on typical content frame rates for power efficient, virtually stutter free and low-latency display update.



* Adaptive-Sync can only be activated within 40Hz ~ 60Hz.

* For supported GPUs, minimum PC system and driver requirements, please contact the GPU manufactures.

To activate this function, you need to do the following: turn off Motion Sync, turn off PIP/PBP mode and set DisplayPort Stream to DisplayPort 1.2.

- **Dynamic Dimming:** Synchronizes with contents while contrast changing to execute backlight dynamic dimming. You can adjust the synchronization speed as “Fast”, “Medium” or “Gradual”.



To activate this function, you need to do the following: turn off PIP/PBP.

- **USB Setup:** Configures the USB Type C port setting. The USB Setup parameter affects the output resolution only when the source is connected to the USB Type C port. Due to the technological differences between USB 2.0 and USB 3.0, the maximum USB data throughput (bandwidth and other related characteristics) varies and therefore influences the maximum output resolution.
 - * USB 3.0: The data transfer rate according to the 3.0 specification in USB Type C port can only output the maximum resolution of 4K2K 30Hz.
 - * USB 2.0: The data transfer rate according to the 2.0 specification in USB Type C port can output the maximum resolution of 4K2K 60Hz.



-
- The data transfer rate will remain USB 3.0 when using USB Type C to A cable.
 - The USB Setup setting does not affect the resolution if the source is connected to the DisplayPort or HDMI port.
-

- **Power Saving:**
 - * “Normal Level” allows the USB downstream ports/USB Type-C ports to charge external devices when the monitor enters power saving mode.
 - * “Deep Level” does not allow all ports to charge external devices and keeps USB Type-C and USB signals from being automatically detected when the monitor enters power saving mode.
- **OSD Setup:**
 - * Adjusts the OSD timeout from 10 to 120 seconds.
 - * Enables or disables the DDC/CI function.
 - * Adjusts the OSD background from opaque to transparent.
 - * Adjusts the OSD rotation.
- **Language:** There are 21 languages for your selection, including English, French, German, Italian, Spanish, Dutch, Portuguese, Russian, Czech, Croatian, Polish, Romanian, Hungarian, Turkish, Simplified Chinese, Traditional Chinese, Japanese, Korean, Thai, Indonesian, Persian.
- **Calibration Reminder:** To remind user of calibrating this monitor to ensure color accuracy every working period. There are 3 alarms (300/600/1000 hours) and OFF for user’s preference.



This function is enabled when User Mode 1 or User Mode 2 is selected.

- **DisplayPort Stream:** Compatibility with graphic card. Select DisplayPort 1.1 or DisplayPort 1.2 by graphic card DP version.



DisplayPort 1.1 is only available when Adaptive-Sync is off.

- **Key Lock:** To disable all function keys. Press the second button from the top over five seconds to cancel the key lock function.
- **Power Indicator:** Turns the power LED indicator on/off.
- **Ambient Effect:** Synchronizes display brightness with ambient light changes.

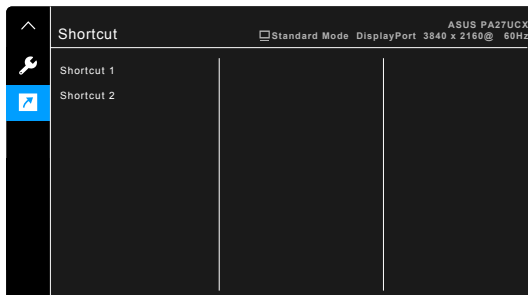


To activate this function, you need to do the following: disable HDR on your device, turn off Motion Sync and set Blue Light filter to Level 0.

- **Information:** Shows the monitor information.
- **All Reset:** “Yes” allows you to restore the default settings.

9. Shortcut

Defines the functions for Shortcut 1 and 2 buttons.



- **Shortcut 1/Shortcut 2:** selects a function for Shortcut 1 and 2 buttons.



When a certain function is selected or activated, your shortcut key may not support. Available function choices for shortcut: Blue Light Filter, Brightness, HDR, Contrast, PIP/PBP Setting, Color Temp., Volume, Motion Sync, User Mode 1, User Mode 2.

3.2 Specifications summary

Panel Type	TFT LCD
Panel size	26.93" (16:9, 68.4 cm) wide screen
Max. Resolution	3840 x 2160
Pixel pitch	0.1553 mm
Brightness	300 cd/m ² (Typ.), 1200 cd/m ² (HDR on typ.)
Contrast Ratio (Typ.)	1,000,000:1
Contrast Ratio (Max.)	100,000,000:1 (with Dynamic Dimming on)
Viewing angle (H/V) CR>10	178°/178°
Display colors	1.07 billion
Color gamut	Adobe RGB 99.5%, DCI-P3 97%, Rec2020 83%, sRGB 100%
Response time	5 ms (Gray to gray)
ProArt Preset selection	13 color preset modes
Color temperature selection	5 color temperatures
Digital input	HDMI v2.0, DisplayPort v1.2a, USB Type-C
Earphone jack	Yes
USB 3.0 port	Upstream x 1, Downstream x 4
Color	Black
Power LED	White (On)/Amber (Standby)
Tilt	+23° ~ -5°
Swivel	+60° ~ -60°
Pivot	+90°; -90°
Height Adjustment	120 mm
Kensington lock	Yes
AC input voltage	AC: 100~240V
Power consumption	Power On: < 46 W** (Typ.), Standby: < 0.5 W (Typ.), Power Off: 0 W (Switch off)
Temperature (Operating)	0°C~40°C
Temperature (Non-operating)	-20°C~+60°C
Dimension (W x H x D)	625.2 mm x 544.5 mm x 228.8 mm (with stand, highest) 625.2 mm x 424.5 mm x 228.8 mm (with stand, lowest) 625.2 mm x 367.2 mm x 91.3 mm (without stand) 768 mm x 355 mm x 479 mm (package)
Weight (Esti.)	7.6 kg (without stand); 11.5 kg (Net); 15.5 kg (Gross)
Multi-languages	21 languages (English, French, German, Italian, Spanish, Dutch, Portuguese, Russian, Czech, Croatian, Polish, Romanian, Hungarian, Turkish, Simplified Chinese, Traditional Chinese, Japanese, Korean, Thai, Indonesian, Persian)

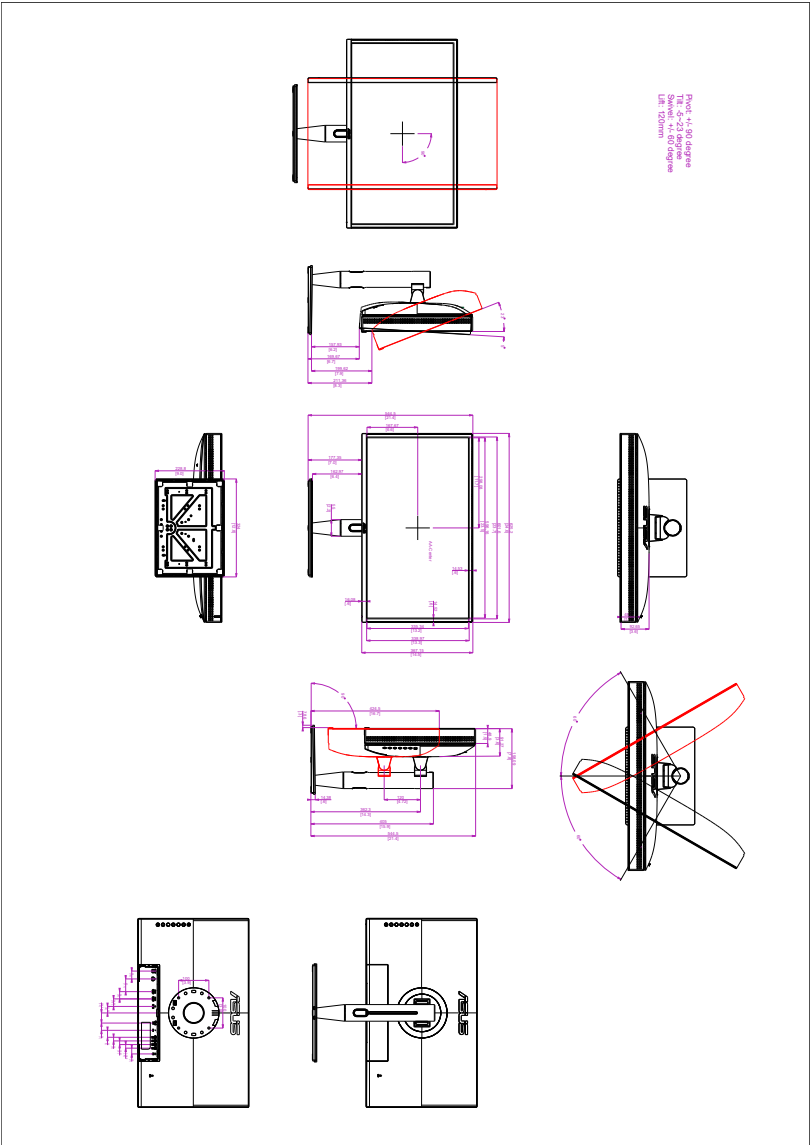
Accessories	Quick start guide, Warranty card, Power cord, HDMI cable, USB Type-C cable, DisplayPort cable, USB Type-C to Type-A cable, Input/Output port cover, Color Calibration Testing Report, Color Calibrator (for PA27UCX-K only), Hood
Compliance and Standards	UL/cUL, FCC, ICES-3, CB, CE, ErP, WEEE, ISO 9241-307, UkrSEPRO, CU, CCC, CEL, BSMI, RCM, MEPS, VCCI, PSE, PC Recycle, J-MOSS, KC, KCC, e-Standby, PSB, RoHS, CEC, Windows 7, 8.1 and 10 WHQL, TUV Low Blue Light, TUV Flicker Free, VESA Display HDR1000, Mac Compliance***

*Specifications are subject to change without notice.


**Measuring a screen brightness of 200 nits without audio/USB/Card reader connection.

***Requires Mac OS 10.10.x, 10.11.x, 10.12.x.

3.3 Outline dimensions



3.4 Troubleshooting (FAQ)

Problem	Possible Solution
Power LED is not ON	<ul style="list-style-type: none">• Press the  button to check if the monitor is in the ON mode.• Check if the power cord is properly connected to the monitor and the power outlet.• Check if the power switch is ON.
The power LED lights amber and there is no screen image	<ul style="list-style-type: none">• Check if the monitor and the computer are in the ON mode.• Make sure the signal cable is properly connected the monitor and the computer.• Inspect the signal cable and make sure none of the pins are bent.• Connect the computer with another available monitor to check if the computer is properly working.
Screen image is too light or dark	<ul style="list-style-type: none">• Adjust the Contrast and Brightness settings via OSD.
Screen image bounces or a wave pattern is present in the image	<ul style="list-style-type: none">• Make sure the signal cable is properly connected to the monitor and the computer.• Move electrical devices that may cause electrical interference.
Screen image has color defects (white does not look white)	<ul style="list-style-type: none">• Inspect the signal cable and make sure that none of the pins are bent.• Perform All Reset via OSD.• Adjust the R/G/B color settings or select the Color Temperature via OSD.
No sound or sound is low	<ul style="list-style-type: none">• Ensure that the HDMI/DisplayPort cable is properly connected to the monitor and the computer.• Adjust the volume settings of both your monitor and HDMI/DisplayPort device.• Ensure that the computer sound card driver is properly installed and activated.

3.5 Supported operating modes

Resolution Frequency	Vertical Frequency (Hz)	Horizontal Frequency (KHz)	Pixel (MHz)
640 x 480	59.94(N)	31.47(N)	25.18
640 x 480	72.82(N)	37.87(N)	31.5
640 x 480	75.00(N)	37.5(N)	31.5
720 x 400	70.08(P)	31.47(N)	28.32
800 x 600	56.25(P)	35.16(P)	36.00
800 x 600	60.32(P)	37.88(P)	40.00
800 x 600	72.12(P)	48.08(P)	50.00
800 x 600	75.00(P)	46.86(P)	49.50
1024 x 768	60.00(N)	48.36(N)	65.00
1024 x 768	70.069(N)	56.476(N)	75.00
1024 x 768	75.00(N)	60.02(N)	78.75
1152 x 864	75.00(P/N)	67.5(P/N)	108.00
1280 x 720	60	44.77(N)	74.5
1280 x 960	60.00(N)	60.00(P)	108.00
1280 x 1024	60.02(P)	63.98(P)	108.00
1280 x 1024	75.02(P)	79.98(P)	135.00
1440 x 900	59.89(P)	55.94(N)	106.50
1600 x 1200	60.00(P)	75.00(P)	162.00
1680 x 1050	60.00(P)	65.29(N)	146.25
1920 x 1080	60.00(P)	67.5(P)	148.5
1920 x 1200	59.885(P)	74.556(N)	193.25
1920 x 2160	135.0(P)	60.0(N)	279
2560 x 1080	59.978(N)	66.636(P)	181.25
2560 x 1440	59.951(N)	88.787(P)	241.50
3840 x 2160	24(P)	52.593(N)	266.75
3840 x 2160	25	54.786(N)	278.75
3840 x 2160	30(P)	67.5(N)	297
3840 x 2160	50(P)	111.174(N)	587
3840 x 2160 (DP only)	60(N)	133.313(P)	533.25
3840 x 2160 (HDMI only)	60(N)	135(P)	594.0

When the monitor is operating in the video mode (ie, not displaying data) using the HDMI connector, the following high definition modes shall be supported in addition to standard definition video.

Resolution	Vertical Frequency (Hz)	Horizontal Frequency (KHz)
1920 × 1080p	50	56.25
	59.94	67.43
	60	67.5
1920 × 1080i	50	28.13
	59.94	33.72
	60	33.75
1440 × 480P	59.94	31.47
	60	31.5
1440 × 576P	50	31.25
1280 × 720p	50	37.5
	59.94	44.95
	60	45

* Modes not listed in the table may not be supported. For optimal resolution, we recommend that you choose a mode listed in the table above.