

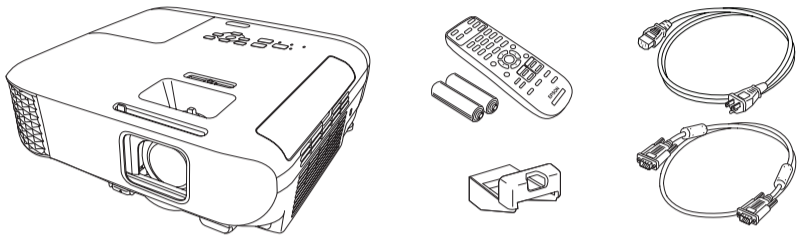
## Quick Setup

**IMPORTANT:** Before using this product, make sure you read these instructions and the safety instructions in the online *User's Guide*.

**Note:** These illustrations show the PowerLite 992F, but the instructions are the same for other models unless otherwise noted.

## Contents

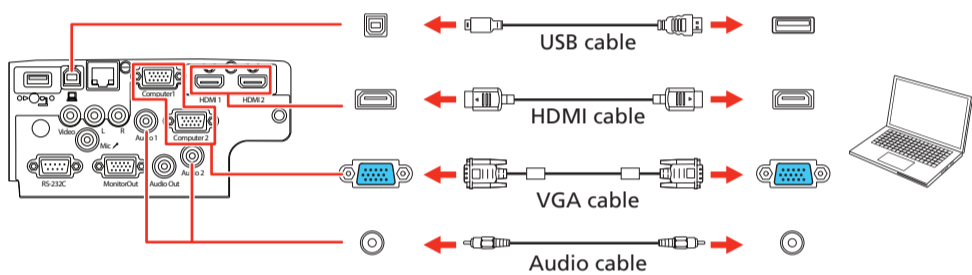
Make sure your projector box includes all of these parts (LAN module cover not included with PowerLite E20/992F/1288):



## Connect the projector

Choose from the following connections. See the sections below or the online *User's Guide* for details.

### Computer



### HDMI port

Connect one end of an HDMI cable to one of the projector's HDMI ports and the other end to an HDMI port on your computer.

### Computer port

Connect one end of a VGA cable to one of the projector's computer ports and the other end to your laptop or computer's monitor port. Make sure to switch your laptop to external display (see "Troubleshooting" on the back of this sheet). You can also connect an audio cable.

### USB port

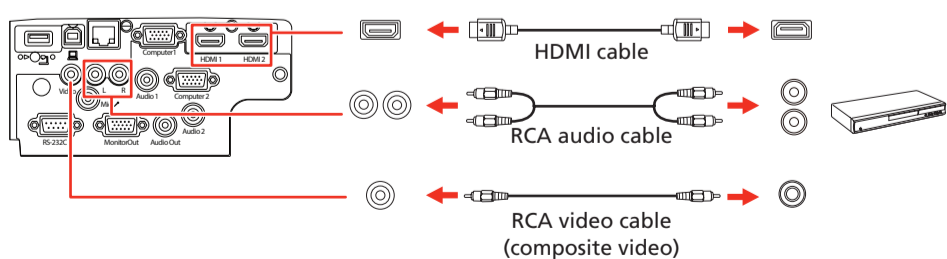
Connect the square end of a USB cable to the projector's **USB-B** (square) port. Connect the flat end of the cable to any USB port on your computer.

**Windows Vista® or later:** After turning on the projector, follow the on-screen instructions to install the Epson® USB Display software (**EMP\_UDSE.EXE**; only on first connection). If the software screen does not display automatically, open **My Computer**, **Computer**, or **This PC**, then double-click **EPSON\_PJ\_UD**.

**OS X 10.7.x or higher:** After turning on the projector, the setup folder for USB Display appears in the Finder. Double-click **USB Display Installer** and follow the on-screen instructions to install the Epson USB Display software (only on first connection).

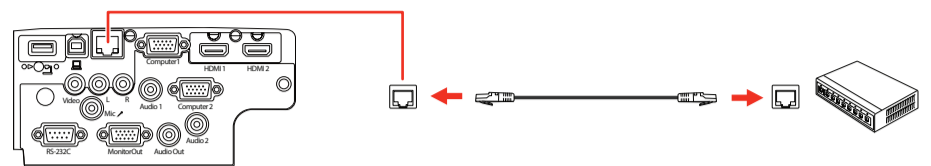
### Video device

Connect multiple video devices and use the **Source Search** button on the projector or remote control to switch between them.



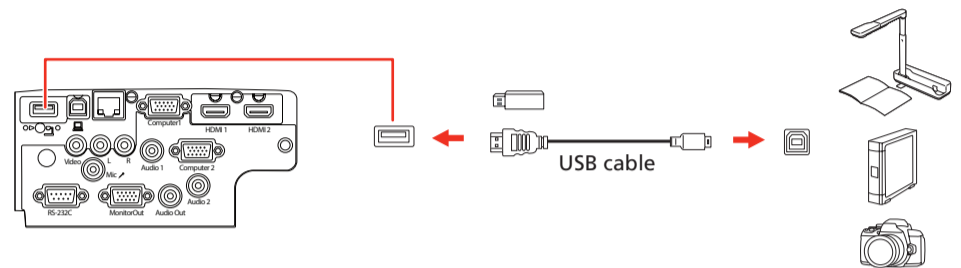
### Wired network (PowerLite X49/W49/118/119W/982W/992F)

Connect the projector to your network using an Ethernet cable. See "Setting up a wired connection" for more information.



### USB device or document camera (PowerLite X49/W49/118/119W/982W/992F/1288)

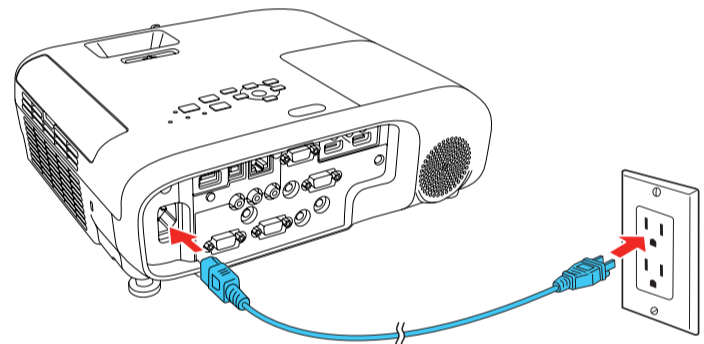
Connect a supported digital camera, USB flash drive, USB storage device, or Epson USB document camera to the projector's **USB-A** (flat) port.



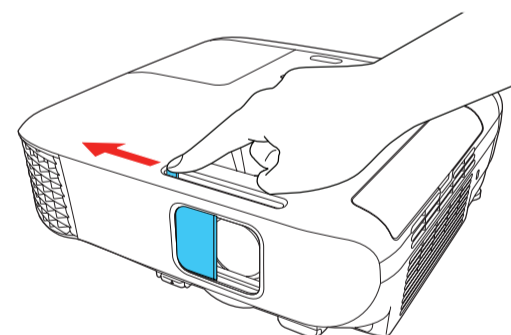
If you connect a digital camera, USB flash drive, or USB storage device, you can use the projector's PC Free feature. See the online *User's Guide* for details.

## Turn on your equipment

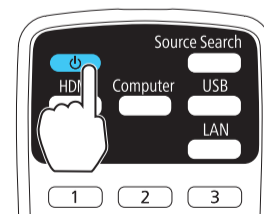
- 1 Turn on your computer or video source.
- 2 Plug in the projector. The power light on the projector turns blue.



- 3 Open the A/V Mute slide all the way.



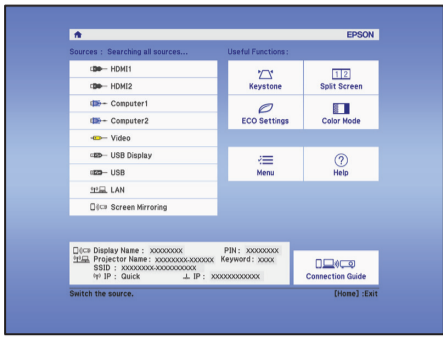
- 4 Press the power button on the projector or remote control. The projector beeps, the Status light flashes blue, and then stays on.



**Note:** To shut down the projector, press the power button twice.



- 5** Use the arrow buttons on the remote control to highlight any of the options on the Home screen that appears, then press **↵** to select it. You can switch between projection sources and quickly access various adjustment options from this screen.



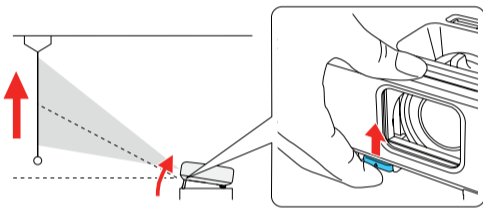
- 6** The default language of the menu system is English. To select another language, press the **Menu** button on the projector or remote control. Select **Extended** and press **↵**. Select **Language** and press **↵**. Select your language and press **↵**. Press the **Menu** button to exit the menu system.

## Adjust the image

- 1** If you don't see an image, press the **Source Search** button on the projector or remote control to select the image source.

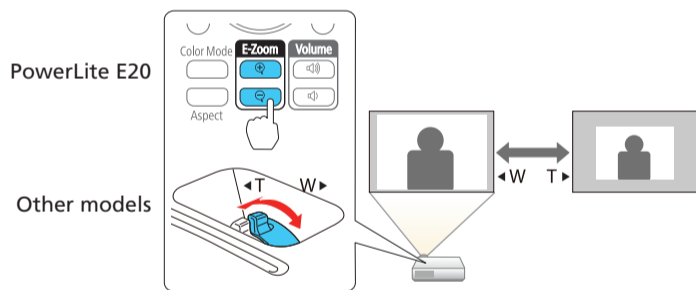
**Note:** If you still see a blank screen or have other display problems, see the troubleshooting tips on the back of this sheet.

- 2** To raise the image, press the foot release button and lift the front of the projector. Release the button to lock the foot in position.

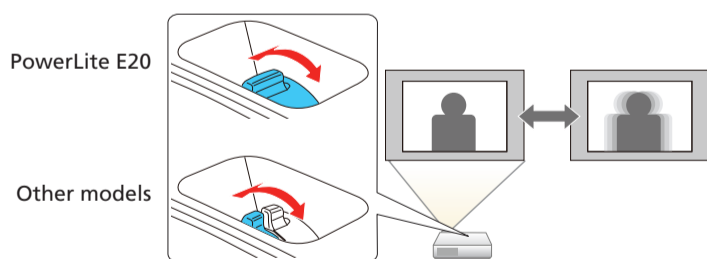


- 3 PowerLite E20:** To reduce or enlarge the image, press the **E-Zoom** buttons on the remote control.

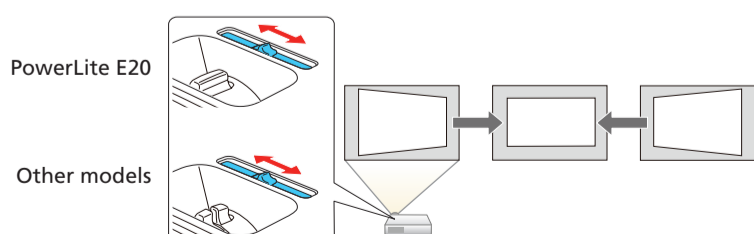
**Other models:** To reduce or enlarge the image, turn the zoom ring.



- 4** To sharpen the image, turn the focus ring.



- 5** If your image looks like or , you may have placed the projector off to one side of the screen at an angle. Place the projector directly in front of the center of the screen, facing the screen squarely. If you can't move the projector, use the horizontal keystone slider on the projector to correct the image shape.

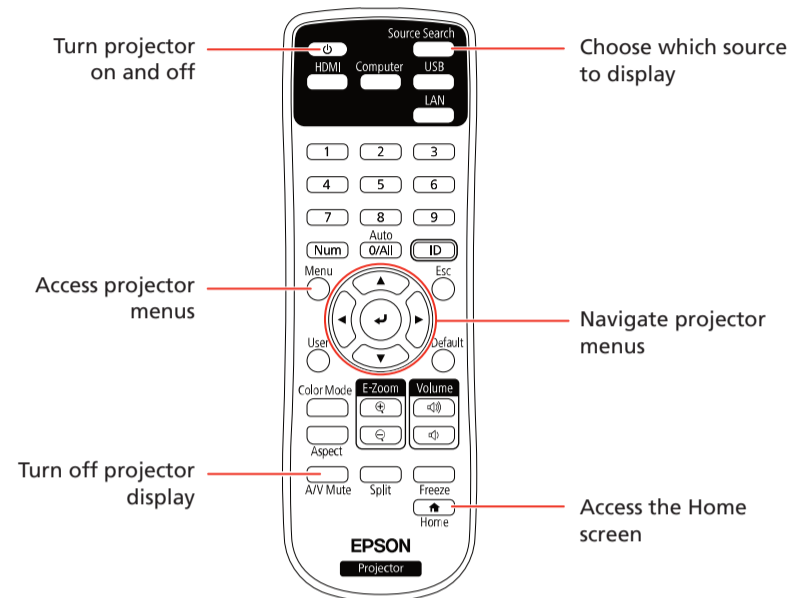
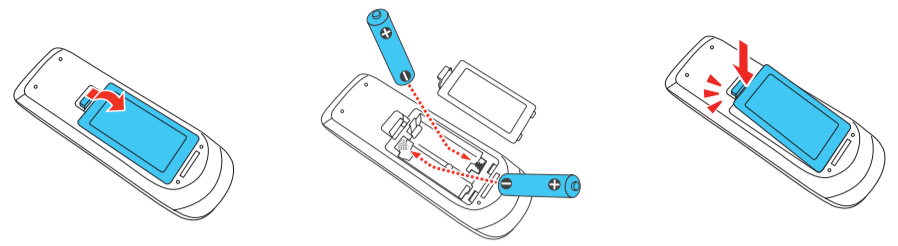


- 6 PowerLite E20:** If your image looks like or , press the or button on the projector to correct it.

**Other models:** Your projector automatically adjusts images that look like or , but if necessary you can press the or button on the projector to correct it.

## Using the remote control

Install the batteries as shown (two AA batteries).



For more information on using the remote control, see the online *User's Guide*.

## Setting up a wireless connection

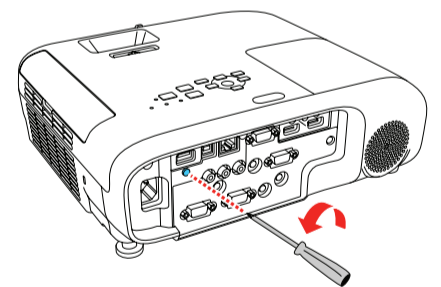
Follow these steps to set up the projector for a wireless network connection.

**Note:** This feature is not available for the PowerLite E20. For more information about using the projector on a network, see the online *User Guide*.

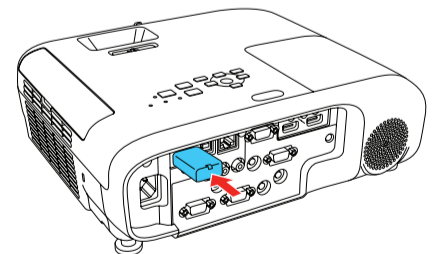
### Install the optional LAN module (PowerLite X49/W49/118/119W/982W)

To project wirelessly with the PowerLite X49/W49/118/119W/982W, you need to install the optional wireless LAN module (V1ZH005A02). You don't need the wireless LAN module for the PowerLite 992F/1288 since the wireless functionality is built-in and can skip to "Select wireless network settings" for these models.

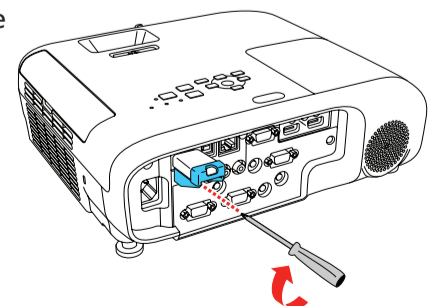
- 1** Remove the wireless LAN module cover screw.



- 2** Insert the wireless LAN module into the **USB-A** port.



- 3** Attach the included wireless LAN module cover and secure it using the screw you removed.

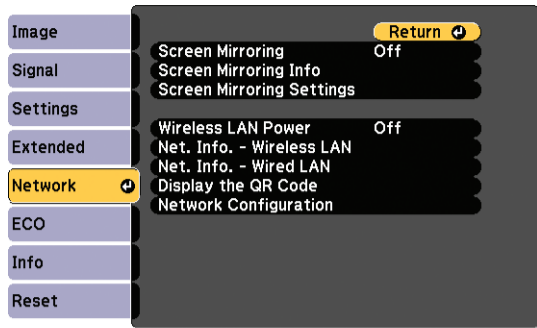


**Note:** The light on the wireless LAN module turns on when the module is installed and operating. The light flashes when the module is communicating over the network.

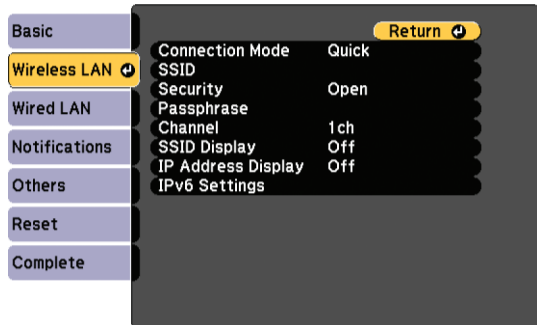


## Select wireless network settings

- 1 Press the **Menu** button on the remote control.
- 2 Select the **Network** menu and press **↵**.



- 3 Select **On** as the **Wireless LAN Power** setting.
- 4 Select **Network Configuration** and press **↵**.
- 5 Select the **Wireless LAN** menu and press **↵**.



- 6 Select one of the following as the **Connection Mode** setting:
  - **Quick** for a direct connection to a computer, tablet, or smartphone.
  - **Advanced** to connect your projector to a router or access point.
- 7 Select any other settings on the Wireless LAN menu as necessary. See the online *User's Guide* for details.
- 8 When you are finished, select **Complete** and follow the on-screen instructions to save your settings and exit the menus.

## Install the optional software

If you connected a computer to the projector, you can download and install optional software to perform various tasks wirelessly, such as monitoring or controlling your projector and projecting from multiple computers.

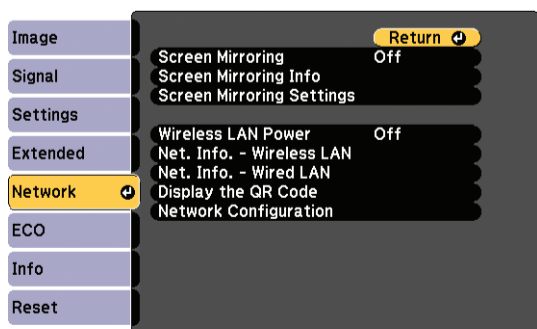
You can download the optional software and its manuals from the Epson website, as described in "Where to get help".

## Setting up a wired connection

Follow these steps to set up the projector for a wired network connection.

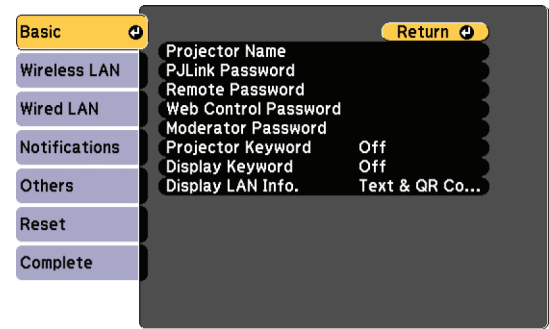
**Note:** This feature is not available for the PowerLite E20/1288. For more information about using the projector on a network, see the online *User's Guide*.

- 1 Press the **Menu** button on the remote control, select the **Network** menu, and press **↵**.



- 2 Select **Network Configuration** and press **↵**.

- 3 Select the **Basic** menu and press **↵**.

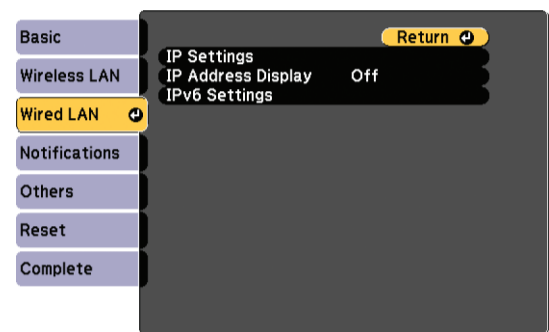


- 4 Select the **Projector Name** setting and enter a name (up to 16 characters long) to identify your projector over the network.

Use the displayed keyboard to enter characters. Press the arrow buttons on the remote control to highlight the characters and press **↵** to select them.

**Note:** See the online *User's Guide* for information on adding passwords.

- 5 Select the **Wired LAN** menu and press **↵**.



- 6 Choose **IP Settings** and press **↵**.
- 7 If your network assigns addresses automatically, turn on the **DHCP** setting. If not, turn off the **DHCP** setting and enter the projector's **IP Address**, **Subnet Mask**, and **Gateway Address**, as needed. Then press **Esc**.
- 8 To prevent the IP address from appearing on the network standby screen, set the **IP Address Display** setting to **Off**.
- 9 When you are finished, select **Complete** and follow the on-screen instructions to save your settings and exit the menus.

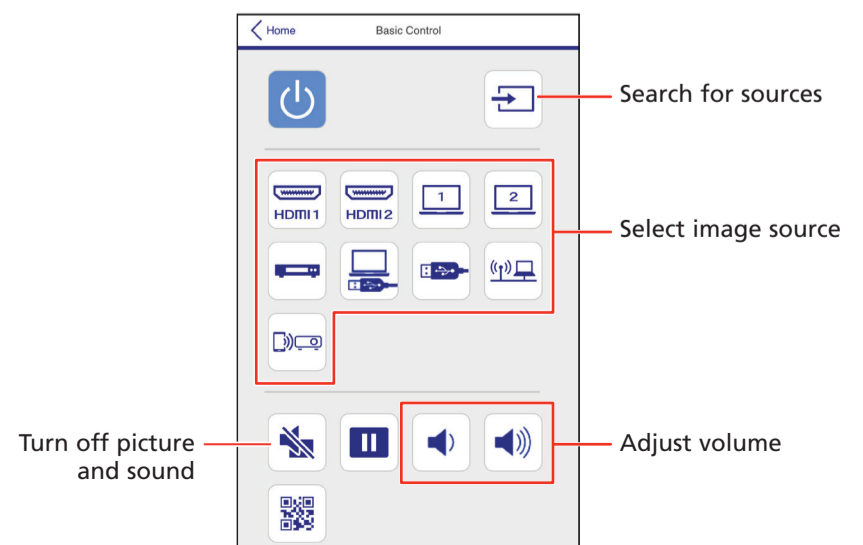
## Using web remote

You can use a standard web browser to control the projector through the network. A virtual remote control on your computer screen lets you perform many of the same functions as you can with the physical remote control.

**Note:** This feature is not available for the PowerLite E20.

- 1 Open your web browser and enter the IP address of the projector you want to monitor in the browser's address box.

If you're not sure what the IP address of the projector is, turn the projector on and select **Net. Info. - Wired LAN** or **Net. Info. - Wireless LAN** from the Network menu to display the IP address of the projector. (Do not enter the leading zeroes.)
- 2 Enter **EPSONWEB** as the user name and **admin** as the password, then click **OK**. The Epson Web Control menu opens.
- 3 Select **Basic Control**. If you see a login screen, enter **EPSONREMOTE** as the user name and **guest** as the password.
- 4 Use the on-screen buttons to operate the projector, as you would using the remote control. See the online *User's Guide* for details.



# Using the Epson iProjection app

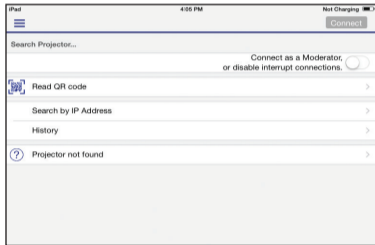
You can project wirelessly from a mobile device (iOS, Android™, or Chromebook™) using the Epson iProjection™ app and a QR code.

**Note:** This feature is not available for the PowerLite E20.

- 1 Use the following QR code to download and install the Epson iProjection app.






- 2 If you connected the projector to a network wirelessly, make sure to connect your mobile device to the same network.
- 3 Press the **LAN** button on the remote control to display a QR code on the projector screen.
- 4 Start Epson iProjection on your mobile device.
- 5 Use the QR code reader feature to read the QR code displayed.



- 6 Follow the app instructions to connect your device to the projector.

For more information on setting up and using this app, visit [www.epson.com/iprojection](http://www.epson.com/iprojection) (U.S.) or [www.epson.ca/iprojection](http://www.epson.ca/iprojection) (Canada).

## Troubleshooting

- If you see a **No signal** message after turning on the projector, make sure your computer or video device is properly connected.
- If you see a blank screen, check the following:
  - Make sure the A/V Mute slide is open.
  - Make sure the  power light on the projector is blue and not flashing.
  - Press the  power button to wake the projector from standby or sleep mode, if necessary.
- If you see a blank screen when a computer is connected, check the following:
  - On some Windows® laptops, you may need to hold down the **Fn** key and press **F7** or the function key that lets you display on an external monitor. It may be labeled **CRT/LCD** or have an icon such as .
  - On Windows 7 or later, hold down the Windows key and press **P** at the same time, then click **Duplicate**.
  - If you're using a Mac laptop, open **System Preferences** and select **Displays**. Click the **Arrangement** tab and select the **Mirror Displays** checkbox.
- If the projector does not respond to remote control commands, make sure the batteries in the remote control are installed correctly. Replace the batteries if necessary.

## Registration

Register today to get product updates and exclusive offers. You can register online at [www.epson.com/webreg](http://www.epson.com/webreg).

# Where to get help

## Manuals

For more information about using the projector, you can view or download the online manuals from the Epson website, as described below.

## Internet support

Visit [www.epson.com/support/](http://www.epson.com/support/) (U.S.) or [www.epson.ca/support/](http://www.epson.ca/support/) (Canada) and search for your product to download software and utilities, view manuals, get FAQs and troubleshooting advice, or contact Epson.

## Telephone support services

To use the Epson PrivateLine® Support service, call (800) 637-7661. This service is available for the duration of your warranty period. You may also speak with a support specialist by calling (562) 276-4394 (U.S.) or (905) 709-3839 (Canada).

Support hours are 6 AM to 8 PM, Pacific Time, Monday through Friday, and 7 AM to 4 PM, Pacific Time, Saturday. Days and hours of support are subject to change without notice. Toll or long distance charges may apply.

## Optional accessories

For a list of optional accessories, see the online *User's Guide*.

You can purchase screens or other accessories from an Epson authorized reseller. To find the nearest reseller, call 800-GO-EPSON (800-463-7766). Or you can purchase online at [www.epsonstore.com](http://www.epsonstore.com) (U.S. sales) or [www.epsonstore.ca](http://www.epsonstore.ca) (Canadian sales).

**EPSON®**  
EXCEED YOUR VISION



EPSON and PowerLite are registered trademarks, EPSON Exceed Your Vision is a registered logomark, and Epson iProjection is a trademark of Seiko Epson Corporation.

PrivateLine is a registered trademark of Epson America, Inc.

Mac and OS X are trademarks of Apple Inc., registered in the U.S. and other countries.

Windows is a registered trademark of Microsoft Corporation in the United States and/or other countries.

Android and Chromebook are trademarks of Google LLC.

General Notice: Other product names used herein are for identification purposes only and may be trademarks of their respective owners. Epson disclaims any and all rights in those marks.

This information is subject to change without notice.

© 2019 Epson America, Inc., 12/19