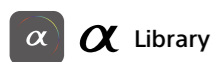


Main specifications of **α6600**

General	Camera type	Interchangeable-lens digital camera
	Lens mount	E-mount
Image sensor	Type	APS-C type (23.5 x 15.6mm), Exmor CMOS sensor
	Number of pixels (effective)	Approx. 24.2 megapixels
	Number of pixels (total)	Approx. 25.0 megapixels
	Image sensor aspect ratio	3:2
	Anti-Dust system	Charge protection coating on optical filter and image sensor shift mechanism
Recording system (still images)	Recording format	JPEG (DCF Ver. 2.0, Exif Ver. 2.31, MPF Baseline compliant), RAW (Sony ARW 2.3 format)
	Image size	3:2 aspect ratio L: 6000 x 4000 (24M), M: 4240 x 2832 (12M), S: 3008 x 2000 (6.0M)
	16:9 aspect ratio (pixels)	L: 6000 x 3376 (20M), M: 4240 x 2400 (10M), S: 3008 x 1688 (5.1M)
	1:1 aspect ratio	L: 4000 x 4000 (16M), M: 2832 x 2832 (8.0M), S: 2000 x 2000 (4.0M)
	Image quality modes	RAW, RAW & JPEG (Extra fine, Fine, Standard), JPEG (Extra fine, Fine, Standard)
	RAW output	14 bit
	Picture Effect	8 types: Posterization (Color), Posterization (B/W), Pop Color, Retro Photo, Partial Color (R/G/B/Y), High Contrast Monochrome, Toy Camera (Normal/Cool/Warm/Green/Magenta), Soft High-Key, Rich-tone Monochrome
	Creative Style	Standard, Vivid, Neutral, Clear, Deep, Light, Portrait, Landscape, Sunset, Night Scene, Autumn leaves, Black & White, Sepia, Style Box (1-6), (Contrast (-3 to +3 steps), Sharpness (-3 to +3 steps))
	Dynamic range functions	Off, Dynamic Range Optimizer (Auto/Level (1-5)), Auto High Dynamic Range (Auto Exposure Difference, Exposure Difference Level (1-6 EV, 1.0 EV step))
	Color space	sRGB standard (with sYCC gamut) and Adobe RGB standard compatible with TRILUMINOS Color
Recording system (movies)	Recording format	XAVC S / AVCHD format Ver. 2.0 compliant
	Video compression	XAVC S: MPEG-4 AVC/H.264 AVCHD: MPEG-4 AVC/H.264
	Audio recording format	XAVC S: LPCM 2ch AVCHD: Dolby Digital (AC-3), 2ch, Dolby Digital Stereo Creator
	Image size (pixels)	NTSC XAVC S 4K: 3840 x 2160 (30p, 100M), 3840 x 2160 (24p, 100M), 3840 x 2160 (30p, 60M), 3840 x 2160 (24p, 60M) XAVC S HD: 1920 x 1080 (120p, 100M), 1920 x 1080 (120p, 60M), 1920 x 1080 (60p, 50M), 1920 x 1080 (30p, 50M), 1920 x 1080 (24p, 50M), 1920 x 1080 (60p, 25M), 1920 x 1080 (30p, 16M) AVCHD: 1920 x 1080 (60i, 24M, FX), 1920 x 1080 (60i, 17M, FH) PAL XAVC S 4K: 3840 x 2160 (25p, 100M), 3840 x 2160 (25p, 60M) XAVC S HD: 1920 x 1080 (100p, 100M), 1920 x 1080 (100p, 60M), 1920 x 1080 (50p, 50M), 1920 x 1080 (25p, 50M), 1920 x 1080 (50p, 25M), 1920 x 1080 (25p, 16M) AVCHD: 1920 x 1080 (50i, 24M, FX), 1920 x 1080 (50i, 17M, FH)
	Slow & Quick Motion (S&Q)	NTSC mode: 1920 x 1080 (60p, 30p, 24p)
	Record Setting	PAL mode: 1920 x 1080 (50p, 25p)
	Slow & Quick Motion (S&Q)	NTSC mode: 1fps, 2fps, 4fps, 8fps, 15fps, 30fps, 60fps, 120fps
	Frame Rate	PAL mode: 1fps, 2fps, 3fps, 6fps, 12fps, 25fps, 50fps, 100fps
	Picture Profile	Yes (Off / PPI-PP10) Parameters: Black level, Gamma, Movie, Still, Cine1-4, ITU709, ITU709 (800N), S-Log2, S-Log3, HLG, HLG-3), Black Gamma, Knee, Color Mode, Saturation, Color Phase, Color Depth, Detail, Copy, Reset
	Movie functions	Audio Level Display, Audio Rec Level, PAL/NTSC Selector, Proxy Recording (2880 x 720 (Approx. 9Mbps)), TC/UB (TC Preset/UB Preset/TC Format/TC Run/TC Make/UB Time Rec), Auto Slow Shutter, REC Control, Clean HDMI Info. (On/Off selectable), Gamma Disp. Assist
Color space	sRGB standard (with sYCC gamut) and Adobe RGB standard compatible with TRILUMINOS Color	
HDMI Output	3840 x 2160 (30p), 3840 x 2160 (25p), 3840 x 2160 (24p), 1920 x 1080 (60p), 1920 x 1080 (60i), 1920 x 1080 (50p), 1920 x 1080 (50i), 1920 x 1080 (24p), YCbCr 4:2:2 8bit / RGB 8bit	
Recording system	Media	Memory Stick PRO Duo, Memory Stick PRO-HG Duo, Memory Stick Micro (M2), SD memory card, SDHC memory card (UHS-I compliant), SDXC memory card (UHS-I compliant), microSD memory card, microSDHC memory card, microSDXC memory card
	Memory card slot	Multi slot for Memory Stick Duo/ SD memory card
Noise reduction	Noise reduction	Long exposure NR: On/Off, available at shutter speeds longer than 1 sec., High ISO NR: Normal/Low/Off
White balance	Multi Frame NR	Auto/ ISO 100 to 102400
	Modes	Auto / Daylight / Shade / Cloudy / Incandescent / Fluorescent (Warm White / Cool White / Day White / Daylight) / Flash / Underwater / Color Temperature (2500 to 9900K) & color filter (G7 to M7 (57-step), A7 to B7 (29-step)) / Custom
Focus system	AWB micro adjustment	Yes (G7 to M7,57-step), (A7 to B7, 29-step)
	Priority Set in AWB	Yes
	Shutter AWB Lock	Yes (Shut. Halfway Down/ Cont. Shooting/ Off)
	Bracketing	3 frames, H/L selectable
Exposure control	Type	Fast Hybrid AF (phase-detection AF/contrast-detection AF) ¹
	Focus point	425 points (phase-detection AF) / 425 points (contrast-detection AF)
	Sensitivity range	EV-2 to EV20 (ISO 100 equivalent with F2.0 lens attached)
	AF modes	AF-A (Automatic AF), AF-S (Single-shot AF), AF-C (Continuous AF), DMF (Direct Manual Focus), Manual Focus
	Focus area	Wide (425 points (phase-detection AF), 425 points (contrast-detection AF)) / Zone / Center / Flexible Spot (S/M/L) / Expanded Flexible Spot / Tracking (Wide / Zone / Center / Flexible Spot (S/M/L) / Expanded Flexible Spot)
	Focus Type with LA-EA1 or LA-EA3 (Sold separately)	Phase-detection
	Other features	Eye-start AF (only with LA-EA2 or LA-EA4 attached (Sold separately)), Object Tracking, Eye AF (Still images): Human (Right/Left Eye Select), Animal, Eye AF (Movie): Human (Right/Left Eye Select), AF micro adjustment (Sold separately), with LA-EA2 or LA-EA4, Predictive control, Focus Lock, Swt./V/H AF Area, AF Area Regist., Circ. of Focus Point
	Metering type	1200-zone evaluative metering
	Metering sensor	Exmor CMOS sensor
	Metering sensitivity	EV-2 to EV20 (at ISO 100 equivalent with F2.0 lens attached)
Metering modes	Multi-segment, Center-weighted, Spot (Standard/Large), Entire Screen Avg., Highlight	
Exposure modes	AUTO (Auto), Programmed AE (P), Aperture priority (A), Shutter-speed priority (S), Manual (M), Movie (Programmed AE (P) / Aperture priority (A) / Shutter-speed priority (S) / Manual (M)), Slow & Quick Motion (Programmed AE (P) / Aperture priority (A) / Shutter-speed priority (S) / Manual (M)), Scene Selection	
Scene Selection	Portrait, Sports Action, Macro, Landscape, Sunset, Night Scene, Hand-held Twilight, Night Portrait, Anti Motion Blur	
Exposure compensation	+/- 5.0EV (1/3 EV, 1/2 EV steps selectable)	
AE bracketing	Bracket: Cont., Bracket: Single, 3/5/9 frames selectable. With 3 or 5 frames, in 1/3, 1/2, 2/3, 1.0, 2.0, or 3.0 EV increments, with 9 frames, in 1/3, 1/2, 2/3, or 1.0 EV increments.	
AE lock	Locked when shutter button is pressed halfway. Available with AE lock button. (On/Off/Auto)	
ISO sensitivity (Recommended Exposure Index)	Still images: ISO 100-32000 (ISO numbers up from ISO 50 to ISO 102400 can be set as expanded ISO range), AUTO (ISO 100-6400, selectable lower limit and upper limit) Movies: ISO 100-32000 equivalent, AUTO (ISO 100-6400, selectable lower limit and upper limit)	

Viewfinder	Type	1.0 cm (0.39 type) electronic viewfinder (color)	
	Number of dots (total)	2,359,296 dots	
	Brightness control	Auto/Manual (5 steps between -2 and +2)	
	Color temperature control	Manual (5 steps)	
	Field coverage	100%	
	Magnification	Approx. 1.07x (35mm camera equivalent: Approx. 0.70x) with 50mm lens at infinity, -1m ¹	
	Dioptr adjustment	-4.0 to +3.0m ⁻¹	
	Eye point	Approx. 23mm from the eyepiece lens, 21.4mm from the eyepiece frame at -1m ¹ (CIPA standard)	
	Display contents	Graphic Display, Display All Info., No Disp. Info., Digital Level Gauge, Histogram	
	LCD screen	Finder Frame Rate selection	NTSC mode: STD 60fps / HI 120fps, PAL mode: STD 50fps / HI 100fps
Type		7.5cm (3.0-type) wide type TFT	
Number of dots (total)		921,600 dots	
Touch Panel		Yes	
Touch Focus		Yes (Touch Panel/Touch Pad)	
Brightness control		Manual (5 steps between -2 and +2), Sunny Weather mode	
Adjustable angle		Up by approx. 180 degrees, down by approx. 74 degrees	
Display contents		Graphic Display, Display All Info, No Disp. Info, Digital Level Gauge, Histogram, For viewfinder, Monitor Off	
Real-time image-adjustment display		On/Off	
Other features		Focus magnifier	5.9x, 11.7x Zebra Yes (selectable level + range or lower limit as custom setting)
	Peaking MF	Yes (Level setting: High/Mid/Low/Off, Color: Red/Yellow/Blue/White)	
	Interval Recording	Yes (1-60 sec. interval, 1-9999 shots, AE lock/AE tracking/High/Mid/Low)	
	Face detection	Modes: Face Priority in AF (On/Off), Face Priority in Multi Metering (On/Off), Regist. Faces Priority (On/Off), Face registration, max. number detectable: 8 faces	
	Auto Object Framing	Yes	
	Clear Image Zoom	Still images: Approx. 2x, Movies: Approx. 1.5x (4K), Approx. 2x (HD)	
	Digital zoom	Smart zoom (Still images) M: Approx. 1.4x, S: Approx. 2.0x Digital zoom (Still images) L: Approx. 4x, M: Approx. 5.7x, S: Approx. 8x Digital zoom (Movies) Approx. 4x	
	Lens compensation	Peripheral Shading, Chromatic Aberration, Distortion	
	Others	Touch Shutter, Touch Focus: Yes (Touch Focus/Touch Pad/Touch Tracking), ISO AUTO Min. SS, Bright Monitoring, Copyright Info, Set File Name, Help guide, Area Setting, Shop Front Mode, Zoom Ring Rotate	
	SteadyShot INSIDE (image stabilisation)	Type	Image Sensor-Shift mechanism with 5-axis compensation (Compensation depends on lens specifications)
Shutter		Type Electronically-controlled, vertical-traverse, focal-plane type Shutter speed Still images 1/4000 to 30 sec, Bulb, Movies: 1/4000 to 1/4 (1/3 steps) NTSC Up to 1/60 in AUTO mode (up to 1/30 in Auto slow shutter mode) PAL Up to 1/50 in AUTO mode (up to 1/25 in Auto slow shutter mode)	
Flash sync. speed		1/160 sec. ²	
Electronic Front Shutter Curtain		Yes, On/Off	
Silent Shooting		Yes, On/Off	
Flash Control		Control	Pre-flash TTL
		Flash compensation	+/- 3.0 EV (switchable between 1/3 and 1/2 EV steps)
		Flash bracketing	3/5/9 frames selectable. With 3 or 5 frames, in 1/3, 1/2, 2/3, 1.0, 2.0, 3.0 EV increments, with 9 frames, in 1/3, 1/2, 2/3, 1.0 EV increments.
		Recycling time	-
		Flash modes	Flash off, Autoflash, Fill-flash, Slow Sync., Rear Sync., Red-eye reduction (On/Off selectable), Wireless control ³ , Hi-speed sync. ⁴
	External flash	Sony α System Flash compatible with Multi Interface Shoe. attach the shoe adaptor for flash compatible with Auto-lock accessory shoe.	
	FE level lock	Yes	
	Wireless control	Yes (Light signal: Available with Fill-flash, Slow Sync., Hi-speed sync. / Radio signal: Available with Fill-flash, Rear Sync., Slow Sync., Hi-speed sync.)	
	Drive	Drive modes	Single Shooting, Continuous shooting (Hi-/Hi/Mid/Lo selectable), Self-timer, Self-timer (Cont.), Bracket: Single, Bracket: Cont., White Balance bracket, DRO bracket
		Self-timer	10 sec. delay/5 sec. delay/2 sec. delay/Continuous self-timer (3 frames after 10 sec. delay/5 frames after 10 sec. delay/3 frames after 5 sec. delay/5 frames after 5 sec. delay/3 frames after 2 sec. delay/5 frames after 2 sec. delay)/Bracketing self-timer (Off/2 sec. delay/5 sec. delay/10sec. delay)
Speed (approx., max.) ⁴		Continuous shooting: Hi*: 11 fps, Hi: 8 fps, Mid: 6 fps, Lo: 3 fps	
No. of frame recordable ⁴ (modes)		JPEG Extra fine L: 99 frames, JPEG Fine L: 115 frames, JPEG Standard L: 116 frames, RAW: 46 frames, RAW&JPG: 44 frames ⁵	
Playback		Single (with or without shooting information Y RGB histogram & highlight/shadow warning), 12/30-frame index view, Enlarged display mode (L: 16.7x, M: 11.8x, S: 8.3x), Auto Review (10/5/2 sec. Off), Image orientation (Auto/Manual/Off selectable), Slideshow, Folder selection (Date/ Still/ AVCHD/XAVC S HD/XAVC S 4K), Forward/Rewind (movie), Delete, Protect, Rating, Disp Cont Shoot Grip	
Interface		PC interface	Mass-storage, MTP, PC remote
		Multi / Micro USB Terminal	Yes ⁶
		Wireless LAN (built-in)	Yes (Wi-Fi Compatible, IEEE 802.11b/g/n [2.4GHz band]) ⁷ , View on Smartphone, Remote control via Smartphone, Send to Computer, View on TV
		NFC [™]	Yes (NFC Forum Type 3 Tag compatible, One-touch remote, One-touch sharing)
		Bluetooth	Yes (Bluetooth Standard Ver. 4.1 [2.4GHz band])
	HD Output	HDMI micro connector (Type-D), BRAVIA Sync (Control for HDMI), PhotoTV HD, 4K movie output/4K still image PB	
	Multi Interface Shoe	Yes ⁸	
	Others	Mic terminal (3.5mm Stereo minijack), Headphone terminal	
	Microphone	Built-in stereo microphone	
	Speaker	Built-in, monaural	
Print	Compatible standards	Exif Print, Print Image Matching III, DPOF setting	
Custom function	Type	Custom key settings, Programmable Setting (Body 2 sets / memory card 4 sets), My Menu, My Dial settings, Reg Cust Shoot Set	
	Battery	One rechargeable battery pack NP-FZ100	
Power	Still images	Approx. 720 shots (Viewfinder) / Approx. 810 shots (LCD monitor) (CIPA standard) ¹⁰	
	Movies	Approx. 140 min (Viewfinder) / Approx. 150 min (LCD monitor) (CIPA standard) ¹⁰ Approx. 250 min (Viewfinder) / Approx. 250 min (LCD monitor) (CIPA standard) ¹⁰	
Weight	With battery and Memory card included	Approx. 503 g (Approx. 1lb 1.8 oz)	
	Body only	Approx. 418 g (Approx. 14.8 oz)	
Dimensions	W x H x D	Approx. 120.0mm x 66.9mm x 69.3mm, Approx. 120.0mm x 66.9mm x 59.0mm (from grip to monitor) Approx. 4 3/4 x 2 3/4 x 2 3/4 inches, Approx. 4 3/4 x 2 3/4 x 2 3/8 inches (from grip to monitor)	
	Operating temperature Range	32-104°F / 0-40°C	



Enter the exciting world of Sony α products through **α Library**, the new photography-themed application for tablets.



Go to Google Play for Android Tablet. For iPad, go to App Store. Then search for "Sony α Library".

Sony | Photo Gallery:

http://www.sony.net/Products/dj_photo-gallery/



Sony | Camera Channel:

<https://www.youtube.com/c/ImagingbySony>



SONY



Interchangeable-lens digital camera

α6600



¹Phase-detection AF may not work with certain lenses or may require lens software update. See Sony support page for details. ²With compatible Sony external flash. ³With compatible external flash. ⁴Varies according to shooting conditions or memory card used. ⁵In the case of this model, when using Continuous Shooting (Hi-) in Drive mode. ⁶Supports Micro USB compatible device. ⁷(Configuration method/Access method) WPS or manually / infrastructure mode. When connecting to smartphones, the camera can always work as a base without a wireless access point. (Security: WEP/WPA-PSK/WPA2-PSK) ⁸Sony accessories for the Accessory Shoe can be attached. ⁹The LCD screen is turned on, shot once every 30 seconds, operate zoom alternately between W and T ends, flash strobe once every two times, turn power off and on once every ten times. ¹⁰Indication recording time, which is defined by repeating the cycle: Power on, start recording, zoom, stand-by and power off. ¹¹The total movie recording time.

<http://www.sony.net/digitalimaging/>

Trademarks & Remarks

• **“SONY”**, **“α”**, **“αE”**, “Exmor”, “BIONZ X”, “BRAVIA”, “SteadyShot”, “InfoLithium”, “Tru-Finder”, “Memory Stick”, “Memory Stick PRO Duo”, “Memory Stick PRO-HG Duo”, “PlayMemories Home”, “x.v Color”, “TRILUMINOS”, “TRILUMINOS Color”, “TRILUMINOS Display”, “XAVC S” and “Imaging Edge” are trademarks or registered trademarks of Sony Corporation. • “Xperia” is a trademark or registered trademark of Sony Mobile Communications AB. • “AVCHD” and “AVCHD Progressive” are trademarks of Panasonic Corporation and Sony Corporation. • The SD Logo, SDHC Logo and SDXC Logo are trademarks of SD-3C, LLC. • The terms HDMI and HDMI High-Definition Multimedia Interface, and the HDMI Logo are trademarks or registered trademarks of HDMI Licensing Administrator, Inc. in the United States and other countries. • The Wi-Fi Protected Setup Identifier Mark is a mark of the Wi-Fi Alliance. • The Bluetooth word mark and logos are registered trademarks owned by Bluetooth SIG, INC. • N-Mark is a registered trademark of the NFC Forum. • Dolby is a trademark of Dolby Laboratories. • WhiteMagic is a trademark of Japan Display Inc. • App Store is a service mark of Apple Inc. • Android, Google Play and Google Play logo are trademarks or registered trademarks of Google Inc. • iPhone and iPad are trademarks of Apple Inc., registered in the U.S. and other countries. • All other company and product names mentioned herein are used for identification purposes only and may be the trademarks or registered trademarks of their respective owners. • “InfoLithium” is a lithium battery pack which can exchange data with compatible electronic equipment about its energy consumption. • Sony recommends that you use the battery pack with electronic equipment bearing the “InfoLithium” mark. • Screen displays and effects used to illustrate some functions are simulated. • For use of other companies’ services and software, 1) other conditions for use may be applied. 2) updating of services and software may be stopped/terminated without prior notice. 3) the contents of services and software may be changed without prior notice. 4) other registrations or payments of other fees may be required.

Specifications and features are subject to change without notice. Product availability varies depending on market.

α 6600

G E 16-55mm F2.8 G

Power in your hands

Sony's APS-C mirrorless camera and lenses incorporate the latest in image-quality features and speedy performance, packed into a compact body. Drawing on technologies that were originally developed for our market-leading α full-frame camera system, they provide a serious, high-level shooting experience anytime and anywhere.



* 3840 x 2160 pixels. A Class 10 or higher SDHC/SDXC card is required for XAVC S format movie recording. A UHS-I (U3) SDHC/SDXC card is required for 100Mbps. Connect this product to an HDR (HLG) compatible Sony TV via a USB cable when displaying HDR (HLG) movies.

APS-C Size
24.2
Mega pixels

ISO
100-32000

AF Speed
0.02
sec.

Phase Detection
425
AF Points

11
Frames
Per Sec

Real-time
Eye AF

Real-time
Tracking

5-axis
SteadyShot
INSIDE

Microphone/
Headphone
Jacks



Reliably capture fast-moving subjects



E 70-350mm F4.5-6.3 G OSS (SEL70350G), 1/640 sec., F7.1, ISO 400

2019 Super Formula

Persistent Real-time Tracking

Sony's sophisticated AI-based* subject tracking algorithms are the basis for Real-time Tracking, which can be initiated by half-pressing the shutter or when the tracked subject is selected by touch. Depending on conditions, the focus area will automatically and seamlessly change between the subject's face and eyes.

* AI (artificial intelligence) including machine learning technology is used.

(1) Face [AI], (2) Eye [AI], (3) Colour, (4) Pattern, (5) Distance, (6) Real-time Processing



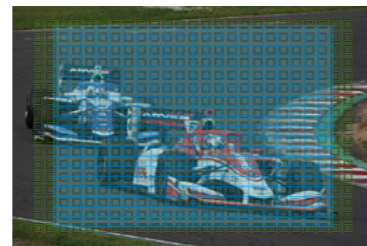
Fast 0.02 AF and Fast Hybrid AF

Densely distributed focus points cover around 84% of the image area, and the Fast Hybrid AF system combines the best of phase-detection AF and contrast-detection AF to achieve a world-leading 0.02-sec.* acquisition speed. When subjects are in motion, AF points densely positioned around the subject are activated for accurate tracking.

* Based on Sony research, CIPA-guideline-compliant internal measurement with an E 18-135mm F3.5-5.6 OSS lens mounted, Pre-AF off and viewfinder in use.

- Phase-detection AF coverage (425 points)
- Contrast-detection AF coverage (425 points)

4D FOCUS



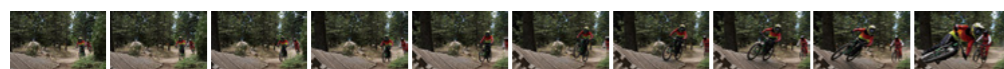
Fast continuous shooting with AF/AE

Capture all the action with continuous shooting with AF/AE tracking at up to 11fps¹. Even when using silent shutter² or the live view mode, up to 8fps¹ is possible. Display lag has been minimised, and up to 116³ JPEG (Standard) images can be shot in each burst, with group display available in the playback mode.

¹ Up to 11fps in continuous "Hi+" mode and up to 8fps in continuous "Hi" mode. Maximum fps will depend on camera settings.

² Maximum fps will depend on camera settings. Some distortion may occur with fast-moving subjects or if the camera is moved sideways rapidly while shooting.

³ With continuous "Hi+" mode. Sony internal measurement.



Great portraits start with the eyes

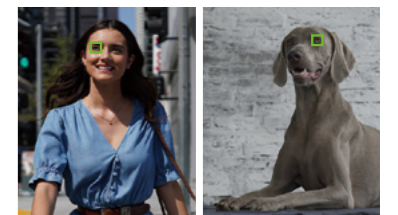


E 16-55mm F2.8 G (SEL1655G), 1/800 sec., F2.8, ISO 100

Real-time Eye AF for human and animal

Real-time Eye AF for human provides automatic eye detection and continuous tracking, and you can prioritise either the left or right eye. It works even when the face is partially hidden, backlit or facing downwards. Real-time Eye AF for animal* helps you take sharply focused pet portraits and beautiful wildlife shots.

* Still images only. Does not work with all types of animal. Tracking and right/left eye selection are not available.



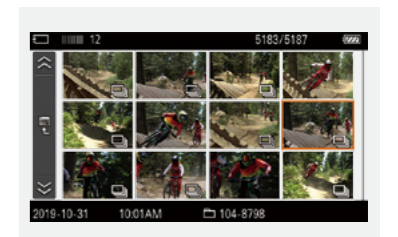
Touch Focus and Touch Shutter

The Touch Focus feature lets you simply touch the appropriate point on the monitor to set the focus. Touch Shutter focuses on the point you touch and then takes a still image, all in one operation.

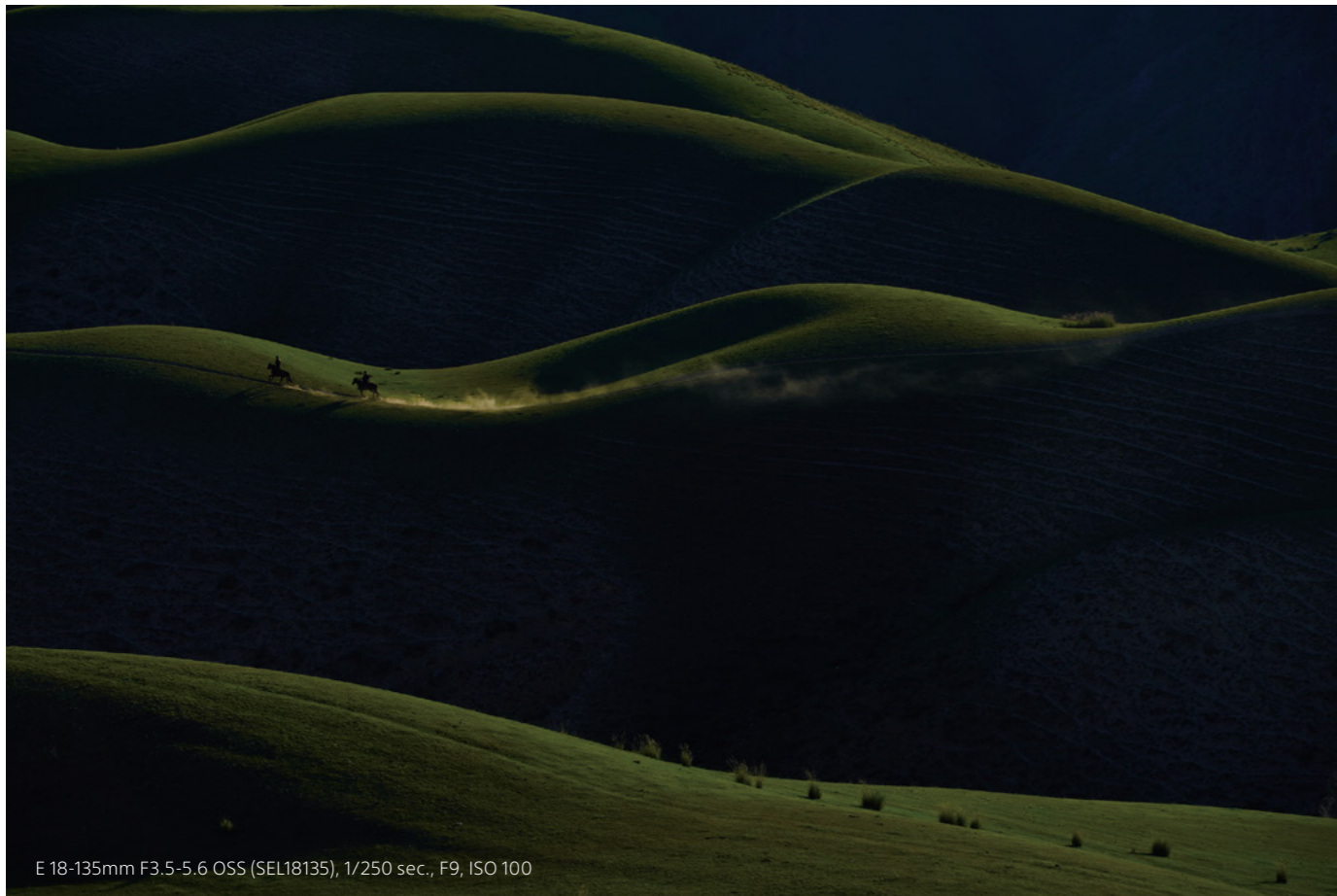


Features to rely on

The α6600's high AF sensitivity enables AF-S autofocus all the way down to EV-2, and camera operability while writing to a memory card has been significantly improved compared to the previous model. Images shot with continuous shooting can be reviewed as groups, and groups can be deleted or protected in one quick operation.



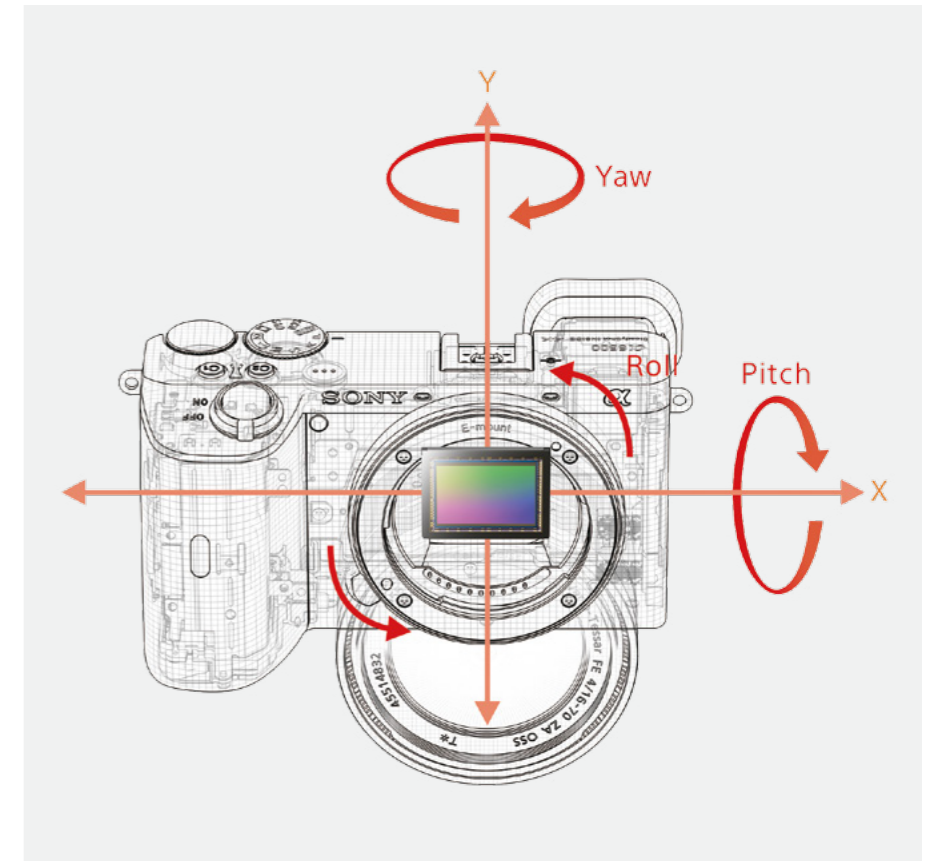
Magnificent images



5-axis in-body image stabilisation

The 5-axis in-body optical image stabilisation mechanism used on our acclaimed full-frame cameras has been adapted as the stabilisation unit for the APS-C sensor on the α6600. Relying on a highly accurate gyro sensor, it detects and compensates for camera shake along five different axes, including angular (pitch and yaw), horizontal, vertical and rotational, for stabilisation equivalent to a 5-step* faster shutter setting.

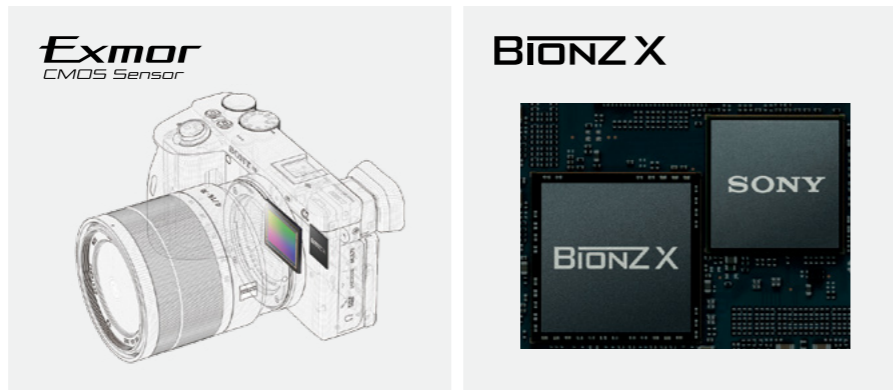
* Based on CIPA standard. Pitch/yaw shake only. With Sonnar T* FE 55mm F1.8 ZA lens mounted. Long-exposure Noise Reduction off.



An innovative image-processing system

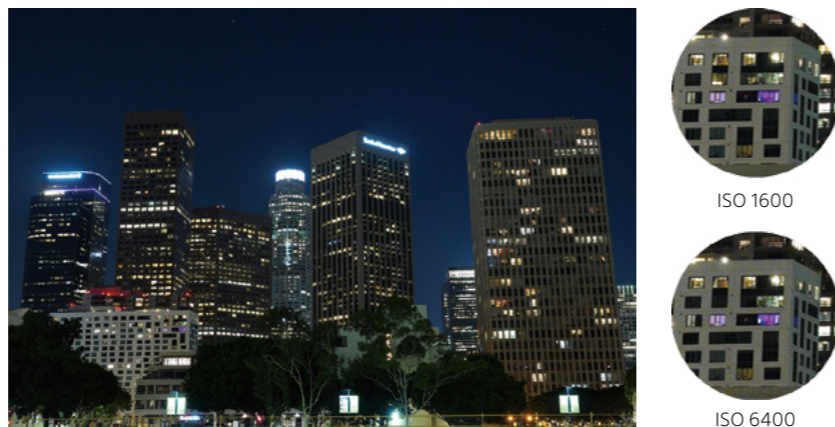
The APS-C size, 24.2MP* Exmor™ CMOS sensor works with the latest-generation BIONZ X™ image processing engine, performing data processing at around 1.8x that of the α6500 and providing images with superb clarity and texture reproduction.

* Approximate effective.



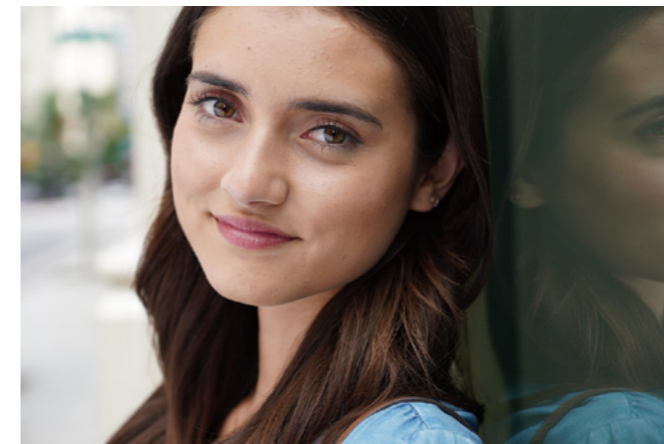
Wide sensitivity, low noise, fine details

Standard ISO range has been extended to ISO 100-32000 (expandable ISO 50-102400 for stills), with excellent noise reduction even when shooting at high sensitivity. Depiction of finely detailed textures and shadow regions has also been improved.



Lifelike skin tones

The skin tone feature inherited from our latest, highly acclaimed full-frame cameras captures the natural beauty of human skin tones, helping you take portraits that look their best.

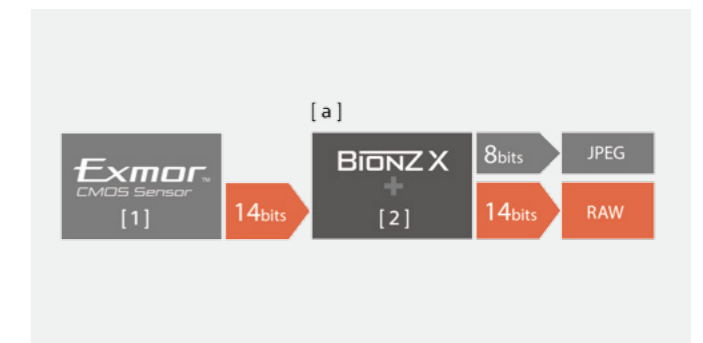


JPEG image quality settings

When the still image file type is set to RAW & JPEG, it is possible to select one of three JPEG image quality options – "Extra Fine", "Fine" or "Standard".

14-bit RAW output with rich tonal gradation

True 14-bit RAW images are delivered via a high-performance LSI and the BIONZ X image processor. To retain the smoothest, most natural tonal gradations, all processing occurs at 16-bit, preventing any dithering or processing errors from being introduced into the final 14-bit RAW image output.



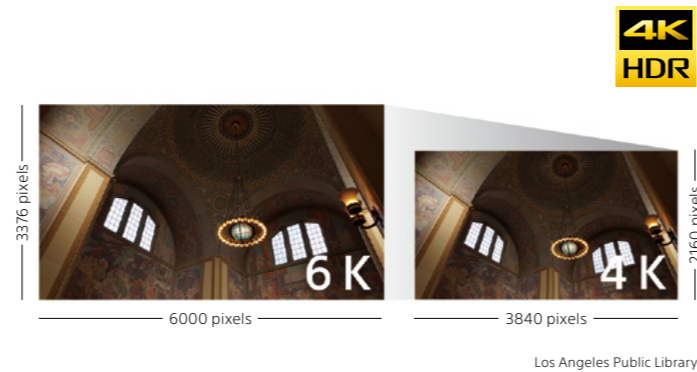
True-to-life 4K HDR (HLG) movie recording

4K HDR (HLG) movie recording

4K HDR (HLG) movie^{*1} recording with full pixel readout and no pixel binning allows oversampling of around 2.4x^{*2} the image information needed for 4K (QFHD: 3840 x 2160), equivalent to 6K resolution, for more realism and depth. Moreover, with Hybrid Log-Gamma (HLG) recording capability, the α6600 makes it easy to immediately enjoy, without extra processing, HDR images. The high-bitrate (up to 100Mbps for 4K 30p/24p) XAVC S² video codec is also available.

^{*1} 3840 x 2160 pixels. A Class 10 or higher SDHC/SDXC card is required for XAVC S format movie recording. A UHS-I (U3) SDHC/SDXC card is required for 100Mbps. Connect this product to an HDR (HLG) compatible Sony TV via a USB cable when displaying HDR (HLG) movies.

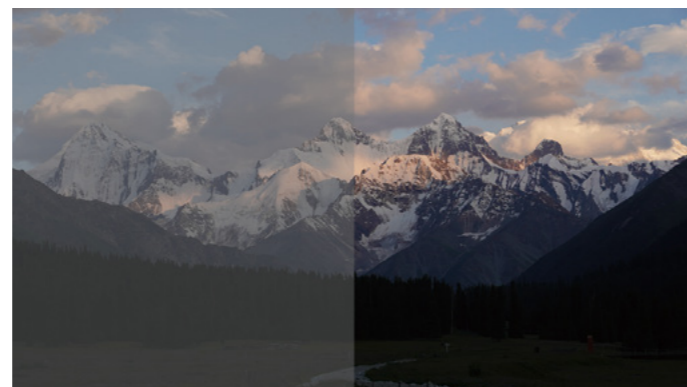
^{*2} 24p recording. Approximately 1.6 times for 30p recording.



S-Gamut/S-Log shooting

S-Log shooting* gives you the flexibility to make more expressive movies by performing colour grading in post-production. The S-Log3 and S-Log2 gamma curves feature a wide dynamic range (up to 1300% larger than Rec. 709) that can help minimise blown highlights and crushed shadows. The S-Log3 gamma setting also provides an impressive 14-stops of dynamic range.

* S-Log2 and S-Log3 are premised on processing pictures.



Creative options for movies

Interval Shooting^{*1} with a set interval between 1 and 60 seconds is available within the camera, and the resulting still images can be edited into a time-lapse movie on a PC, with a simple variable-speed preview function available on the camera. Slow motion (up to 5x) and quick motion (up to 60x) can also be recorded directly on the camera with no post-processing required^{*2}, and high-quality slow-motion movies can be created in post-production using high-speed Full HD recording at up to 120fps.

^{*1} Wi-Fi does not work during Interval Shooting.

^{*2} Sound recording is not possible with this feature. A Class 10 or above SDHC/SDXC card is required.



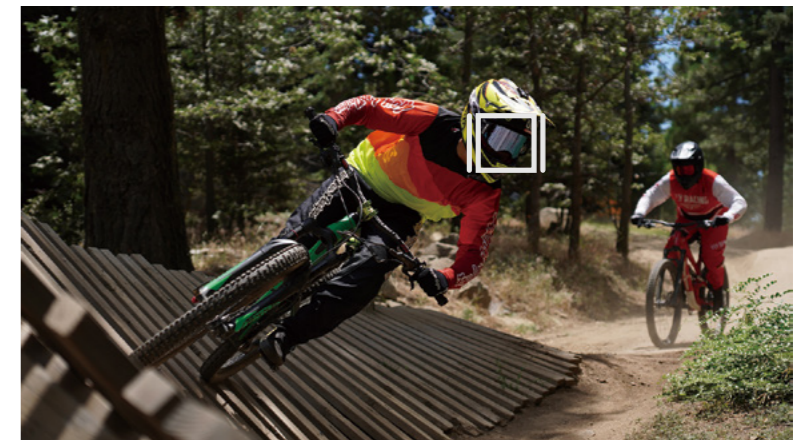
Tell your stories in your own style

The camera provides options for higher-quality audio suitable for serious movie-making and pro-level vlogs. You can connect an external microphone to the mic jack or use line input via XLR connectors, while monitoring audio via the headphone jack. An HDMI micro jack provides clean HDMI output, and there is in-monitor display of current ISO value when shooting with ISO Auto.



Real-time Tracking for movies

The camera's Real-time Tracking feature is available for movies as well as stills. Just touch the point on the screen where you want to focus in order to initiate Real-time Tracking and automatically keep your subject in focus.



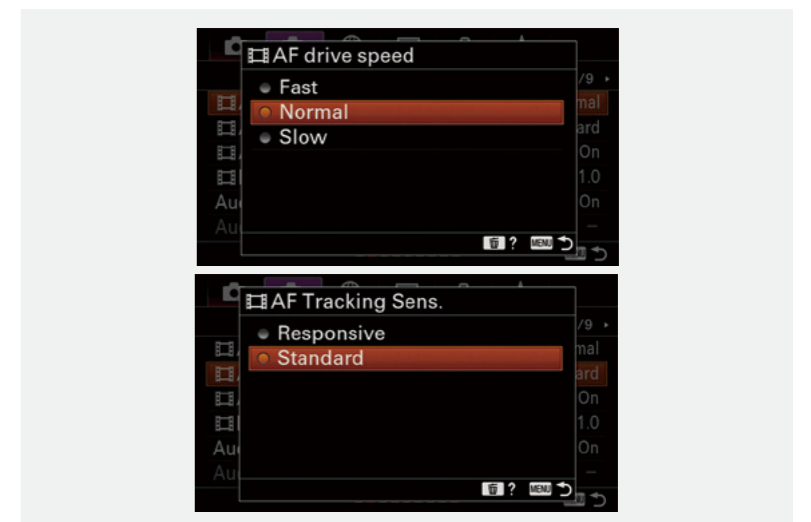
Real-time Eye AF for movies

Human eyes can be automatically detected and tracked while shooting movies. Touch operations from the monitor can initiate Real-time Eye AF tracking on whichever eye you specify. Eyes are tracked precisely and reliably, so you can concentrate on the more creative aspects of movie making.



Optimal AF settings for advanced movie expression

You can adjust AF speed to produce either rapid shifts of focus or slower focus transitions. Also, AF sensitivity can be set to either maintain stable focus on a subject that's briefly obscured by other objects, or shift back and forth between subjects at varying distances.



Other convenient features for movies

- 4K movie transfer to smartphone^{*1}
- Proxy recording for easier preview and pre-editing

- Auto Power Off Temperature^{*2}
- Photo Capture (image extraction from movies)

^{*1} Transfer/playback availability depends on the performance of the smartphone. Requires latest version of Imaging Edge Mobile™.

^{*2} Set to "Standard" for handheld shooting. Use a tripod or other support when "High" is selected. Shooting time may vary according to environmental conditions and camera temperature when set to "High".

Powerful, reliable, versatile

High-capacity Z battery for 2.2x^{*1} long-duration shooting

To support longer shooting sessions, the α6600 comes equipped with the same high-capacity battery introduced with our full-frame cameras*, while maintaining the camera's slim form.

*1 Compared with the α6500.
*2 The α9 and Sony full-frame cameras that were released after the α9.



Dust- and moisture-resistant magnesium-alloy body

The camera is resistant to dust and moisture*, with a top cover, front cover, internal frame, and rear cover constructed from a lightweight but sturdy magnesium alloy.

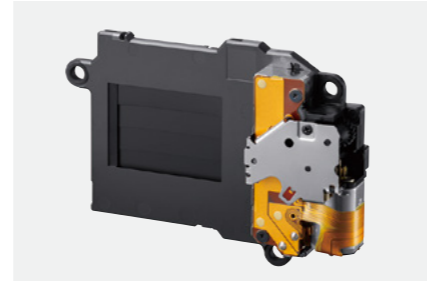
* Not guaranteed to be 100% dust- and moisture-proof.



Durable shutter

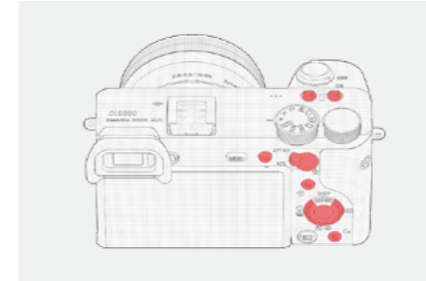
The low-vibration, highly durable shutter is designed to withstand approximately 200,000 shutter cycles*.

* Under Sony internal test conditions, using electronic front shutter.



Customisation features

A fourth Custom button (C button) has been added, and the camera's 11 buttons can be assigned to any of 91 functions. My Dial assigns functions to the control dial and wheel, and My Menu lets you register 30 menu items.



Connectivity

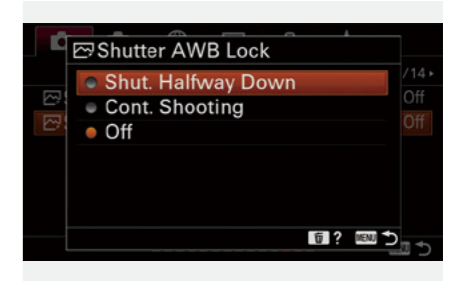
Use your PC or mobile device as a viewfinder and remote, or take control with a Bluetooth® Wireless Remote Commander*. Built-in Wi-Fi® and NFC, Bluetooth® and QR-code options enable a range of features such as wireless file transfer.

* Remote Commander (RMT-P1BT) is optional.



White balance, flash settings

AWB can be locked or unlocked, and you can set colour-tone priority for incandescent lighting. "Highlight" and "Entire Screen Average" metering modes can be selected, as can slow sync and rear curtain sync flash options.



Ergonomic enhancements

For easier handling, the grip shape has been revised and the material and rigidity of the grip area have been upgraded.



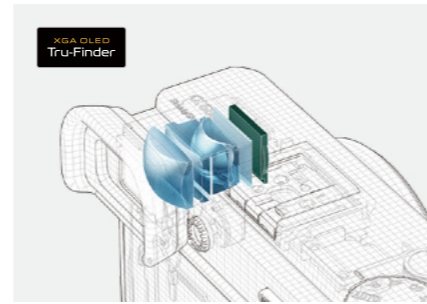
Tiltable LCD monitor

The high-resolution, 921k-dot LCD has a 3.0-type screen and tilts upwards around 180° and downwards around 74°, for easy framing of selfie shots and vlogs or high-angle and low-angle shooting.



High-contrast OLED viewfinder

The high-resolution XGA OLED Tru-Finder™ provides clear visibility and a smooth view, for easy tracking of your subject.



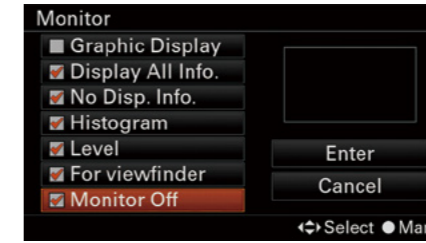
Creative shooting options

Special effects and photographic finishes can easily be added to your images using Picture Effect and Creative Style. And the square 1:1 aspect ratio – ideal for sharing images on social media platforms – is offered as an option.



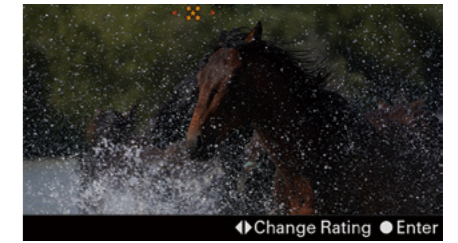
Convenient shooting functions

To avoid distracting light, a "Monitor OFF" selection has been added for the DISP button, turning the monitor off except during image selection and menu use. And on the menu screen, pressing the "Delete" button brings up a help display to clarify menu settings.

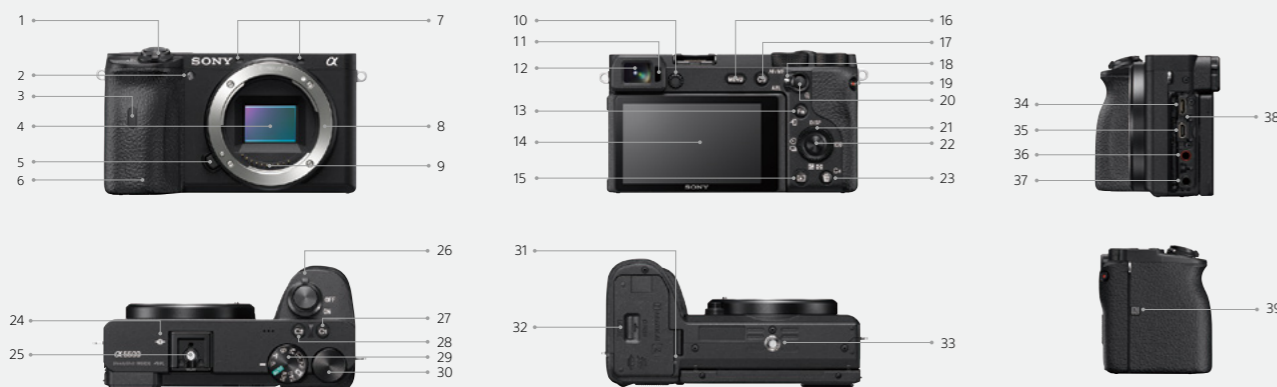


Helpful post-shoot settings

When in playback mode, still images can be given ratings and protected from deletion, and these functions can be accessed via pre-assigned custom keys. Also, the first three characters of still image file names can be edited.



Controls



- | | | | |
|--------------------------------------|--|---|------------------------------|
| 1 Shutter button | 12 Viewfinder | 21 Control wheel | 32 Battery/Memory card cover |
| 2 Self-timer lamp/AF illuminator | 13 For shooting: Fn (Function) button | 22 Center button | 33 Tripod socket hole |
| 3 Infrared remote sensor | For viewing: Send to Smartphone button | 23 C4 button (Custom button 4) /Delete button | 34 Multi/Micro USB Terminal |
| 4 Image sensor | 14 Monitor | 24 Image sensor position mark | 35 HDMI micro jack |
| 5 Lens release button | 15 Playback button | 25 Multi Interface Shoe | 36 Microphone jack |
| 6 Wi-Fi/Bluetooth antenna (built-in) | 16 MENU button | 26 ON/OFF (Power) switch | 37 Headphone jack |
| 7 Microphone | 17 C3 button (Custom button 3) | 27 C1 button (Custom button 1) | 38 Charge lamp |
| 8 Mount | 18 AF/MF/AEL switch lever | 28 C2 button (Custom button 2) | 39 N-mark |
| 9 Lens contacts | 19 MOVIE button | 29 Mode dial | |
| 10 Diopter-adjustment dial | 20 For shooting: AF/MF button/AEL button | 30 Control dial | |
| 11 Eye sensor | For viewing: Enlarge button | 31 Access lamp | |

α camera systems to enhance performance

Discover limitless possibilities with the E-mount interchangeable lens system. Enjoy seamless compatibility with the vast and growing family of full-frame lenses, for highest performance, and compact APS-C lenses offering exceptional quality and mobility.

Lenses

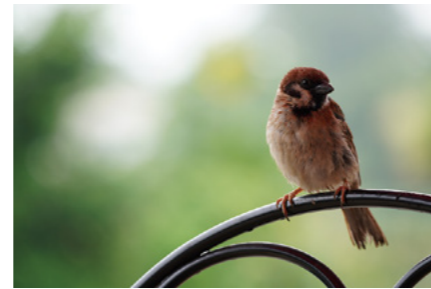
E 16-55mm F2.8 G **NEW** (SEL1655G)

Sony's first 16-55 mm (24-82.5 mm full-frame equiv.) APS-C zoom with a constant F2.8 aperture is remarkably compact while offering performance befitting the G Lens series. A new optical design delivers excellent corner-to-corner resolution, and beautiful bokeh is available when needed. It is compact, lightweight, and ideal for a wide range of subjects.



E 70-350mm F4.5-6.3 G OSS **NEW** (SEL70350G)

Optimised optical and mechanical design offers outstanding super-telephoto zoom performance for APS-C bodies (105-525mm equiv.). Impressive G Lens quality is maintained throughout the zoom range, right out to the image edges. All of this is packed into a compact, mobile 5x super-telephoto zoom lens with built-in optical image stabilisation.



Accessories

	Rechargeable Battery Pack NP-FZ100 i InfoLITHIUM Z		Battery Charger BC-QZ1 i InfoLITHIUM Z		Multi Battery Adaptor NP-MQZ1K i InfoLITHIUM Z		Flash HVL-F45RM ni Multi Interface Shoe
	Battery Video IR Light HVL-LEIR1 ni Multi Interface Shoe Accessory Shoe		Shotgun Microphone ECM-CG60 ni Multi Interface Shoe Accessory Shoe		Shotgun Microphone ECM-B1M* ni Multi Interface Shoe		XLR Adaptor Kit XLR-K3M* ni Multi Interface Shoe
	Remote Commander RMT-P1BT Bluetooth		Remote Control Tripod GP-VPT1 MULTI		Clip-on LCD Monitor CLM-FHD5 ni Multi Interface Shoe Accessory Shoe	* Set DIGITAL/ANALOG switch to ANALOG.	

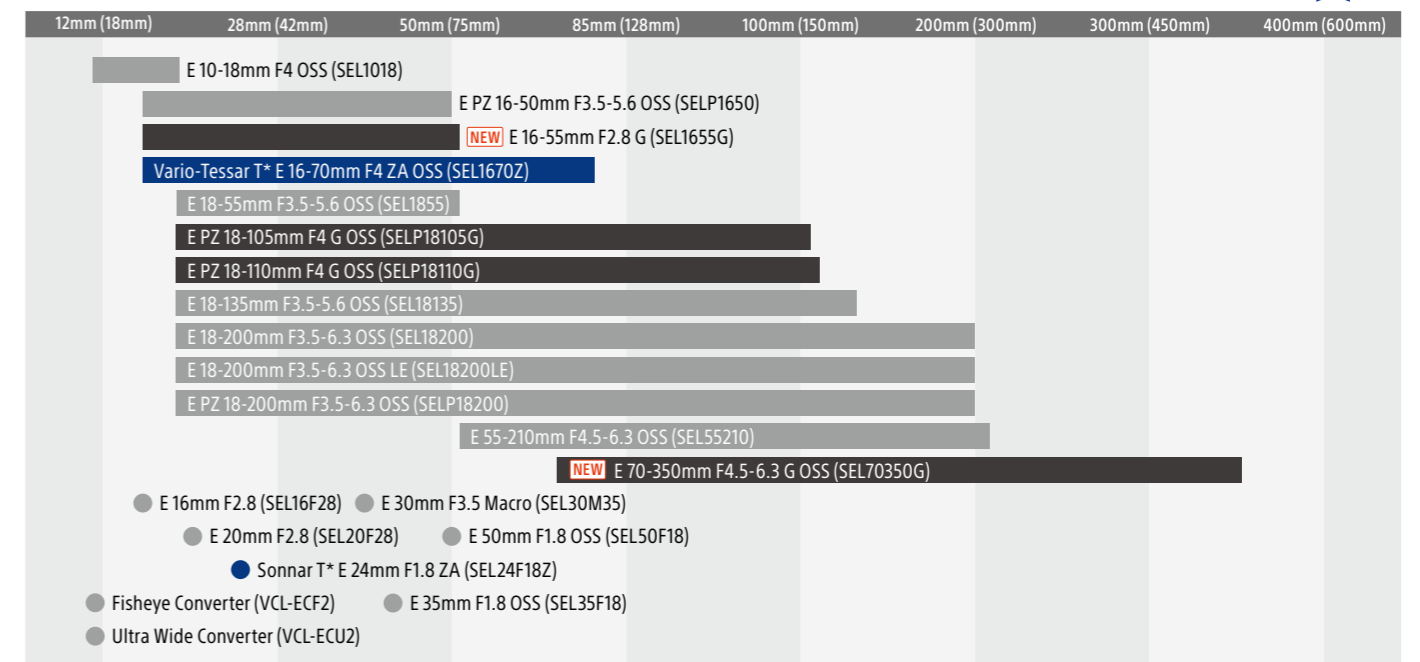
Imaging Edge applications

The Imaging Edge applications help you raise your photography to the next level while making day-to-day operations more convenient. "Remote" and "Viewer" give you remote control and monitoring ability from your PC screen as well as preview, rating and selection features you can use with large image libraries. And "Edit" provides RAW editing functions to turn Sony RAW files into high-quality photos for delivery. "Imaging Edge Mobile" enables remote control and file transfer* including 4K movies.

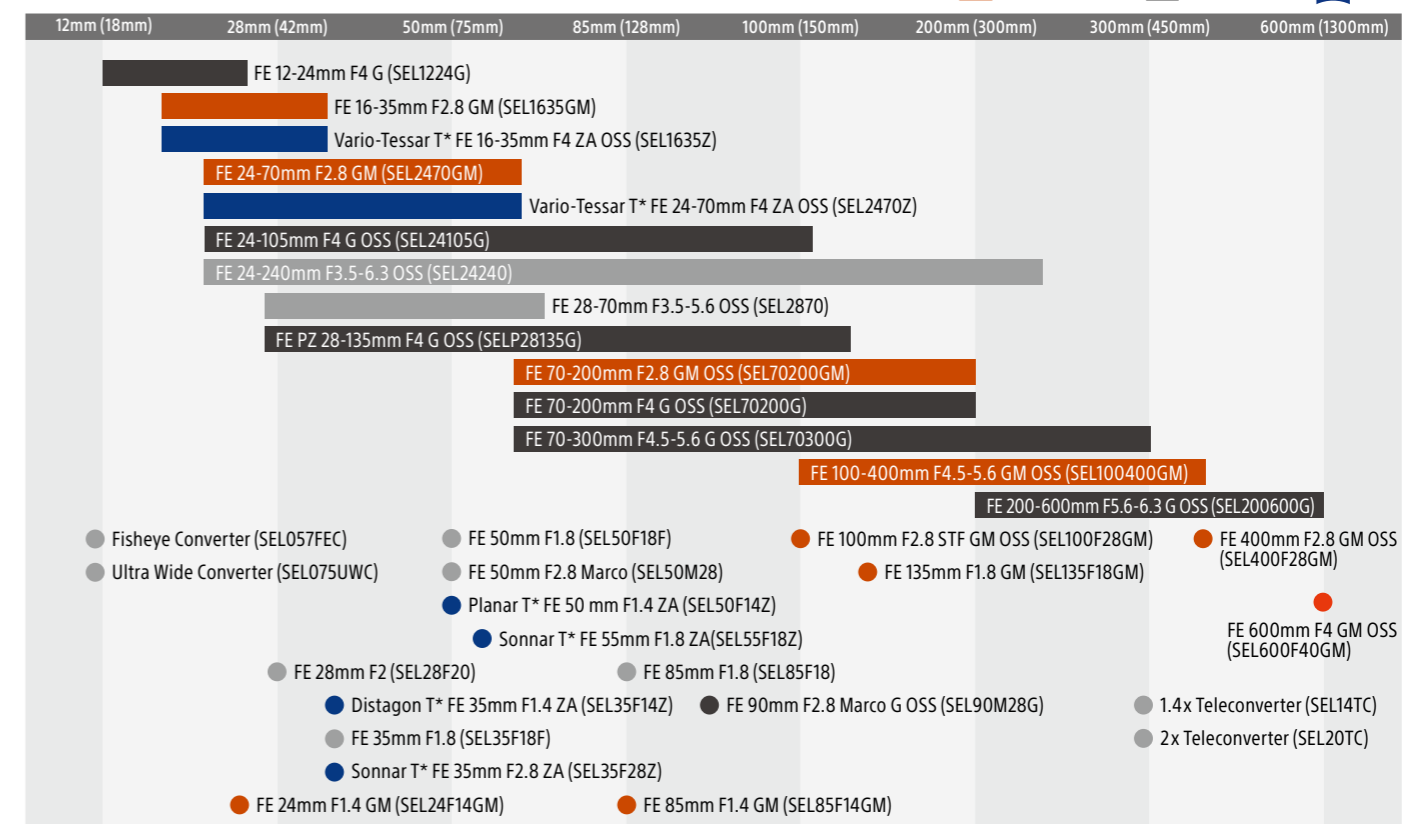
* Availability of transfer / playback depends on the performance of the smartphone.



α E-mount APS-C lenses



α E-mount FE lenses



<https://www.sony.net/ilc/lenses>



<https://www.sony.net/ilc/accy>



<https://imagingedge.sony.net>

