

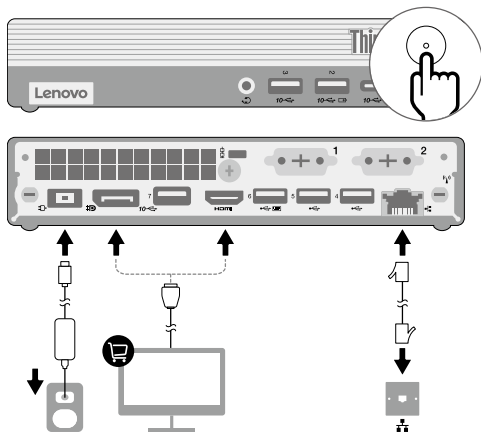



Lenovo
ThinkCentre

ThinkCentre M75q Gen 5



Lenovo



 Read the statement on USB transfer rate in the *User Guide*. To access the *User Guide*, see the methods mentioned in the *User Guide Access* section.

* For selected models

[English]

European Union (EU) / United Kingdom (UK) — radio frequency and power

This radio equipment operates with the following frequency bands and maximum radio-frequency power:

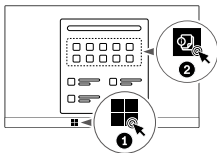
Technology	Frequency band [MHz]	Maximum transmit power
WLAN 802.11b/g/n/ax	2400 - 2483.5	< 20 dBm

Technology	Frequency band [MHz]	Maximum transmit power
WLAN 802.11a/n/ac/ax	5150 - 5725	< 23 dBm
WLAN 802.11a/n/ac/ax	5725 - 5875	< 13.98 dBm
WLAN 802.11ax	5945 - 6425	< 23 dBm
Bluetooth BR/EDR/LE	2400 - 2483.5	< 20 dBm

Note: Not all wireless bands may be enabled depending on your product configuration. Usage of this device is limited to indoor locations in the bands 5150 - 5350 MHz and 5945 - 6425 MHz.



User Guide Access



Reduce

Reuse

Recycle



For FSC Mix logo only

First Edition
(June 2024)

Lenovo, Lenovo logo, ThinkCentre, and ThinkCentre logo are trademarks of Lenovo.

LIMITED AND RESTRICTED RIGHTS NOTICE: If data or software is delivered pursuant to a General Services Administration "GSA" contract, use, reproduction, or disclosure is subject to restrictions set forth in Contract No. GS-35F-05925.

© Copyright Lenovo 2024.