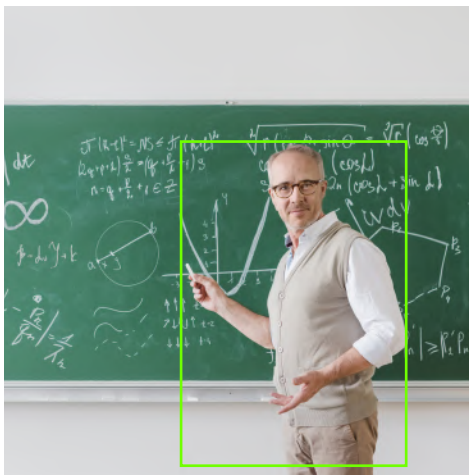




AOPEN

Bright Ideas Connected

180° Conference Camera



Auto Tracking Camera with 180° viewing angle and 4K resolution KP180

The AOPEN KP180 is a 180° viewing angle camera with 4K resolution for video conferencing or remote learning. Being seen and heard correctly during teleconferences is paramount, and could not be more important. Dual 5MP wide-angle cameras capture a full 180° so that everyone in the room can be part of the meeting. The entire whiteboard is viewable for remote learning, and the instructor is tracked automatically using the on-board camera intelligence. The KP180 offers several mounting options: top of a screen, bottom of a screen, or mounted to a small tripod.

The KP180 features:

- + Benefit of 180° FoV, save meeting space
- + 4K resolution with low distortion
- + Auto People Tracking, Auto-detection and Pan Function
- + Multiple viewing mode options
- + Scenario for tilt function
- + Variety Installation orientation
- + Supports 180 Studio for bright and viewing mode options
- + Supports meeting APP: Microsoft Team, SKYPE, Zoom, Line, WeChat, Slack, GoToMeeting, vCube, Webex, Hangout, Google Meet, Google Duo, LifeSize



Wide Viewing Angle



SmartGuide



SmartShine

4K

ULTRA HD



Dual Camera Stitching



Multi-Mode



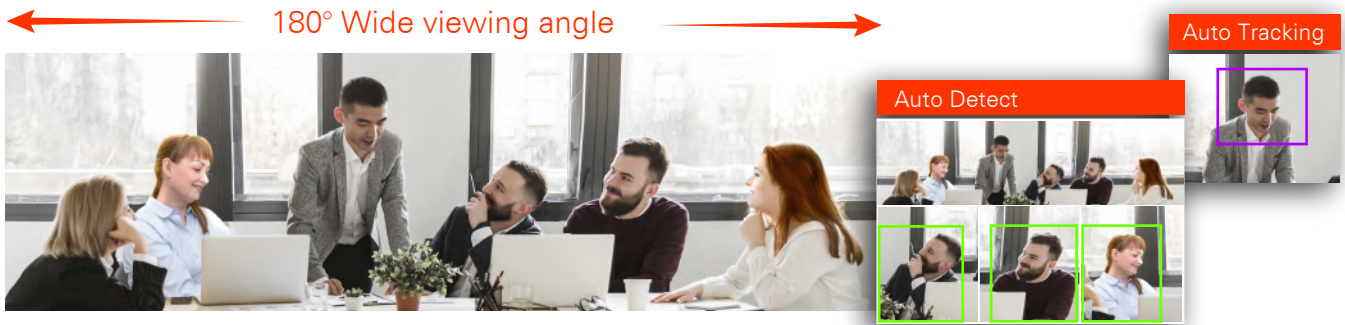
Tile Adjustment



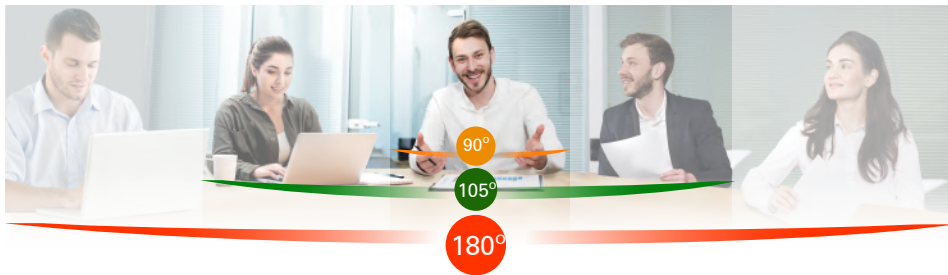
Clam Shell Design

Auto detection and auto tracking

KP180 achieve 180o super wide view angle to save meeting space and keep safe distance, no motor design make sure no noise from camera to interrupt your meeting. The device with auto detection and people tracking will frame all members of the meeting and follow the people automatically who is framed in the meeting.



Adjustable viewing angle



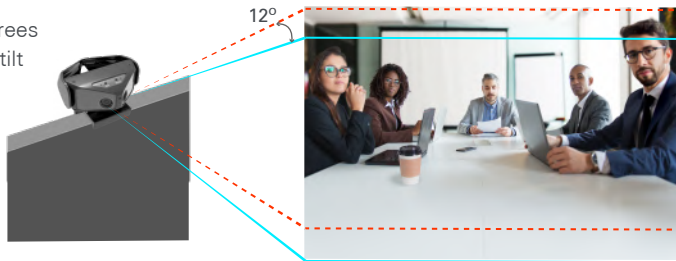
Privacy cover

The KP180 has a physical privacy cover that can be flipped down to cover the front of the lenses, ensuring no visible data is coming from the camera.



Electronic vertical tilt adjustment

An additional 12 degrees of electronic vertical tilt adjustment is available; an on-camera button allows the user to fine-tune the camera angle.



Variety installation Orientation



Top of screen



Under the screen
(Magnets included)



With tripod
(Tripod not included)



On the desk

Dual lens with AI fusion technology

KP180 is designed with AI on board to stitch together two camera images into a seamless wide-format 4K image.*

- * The minimum distance from camera to subject is 50 cm or 2 feet.
- * The AI prioritizes foreground subjects, background artifacts can sometimes occur in the stitching region



Specification

KP180

Dimension: (H x W x D)	Camera kits: 39 x 108 x 73mm
	Clip kits: 28 x 60 x 65mm
Video support:	4K UHD: 3840 x 1920 @ 30fps (2:1)
	1080P FHD: 1920 x 1080 @ 30fps (16:9)
Video format via UVC: MJPG H.264	
Field of View: 180° (H) x 90° (V) adjustable	
MIC: Build-in Omni-directional MIC x 1	
Connection solution to PC: UVC mode via 2M USB cable	

View-Angle Switch Mode

Switch hFoV from 180°, 165° and 90° via button
Switch vFoV from 66°, 66° tilt+12° and 66° tilt-12° via button
Switch to up-side-down Mode via button

System Requirement

Core i CPU with 8GB memory and 64GB HDD
*If using tracking motion, i5 CPU is recommended

AOPEN 180 Studio software

1~4 Grid Mode with SmartGuide
Top/ Down Mode via SmartGuide function
5 types of meeting scenes
Zoom in and Zoom out
Speaker mode for remote education covid-19
People Tracking: Identify people and tracking Motion*

Support

